



MLS 7069115 Residential

\$439,900

2,368 sq ft
3 bedrooms
3 baths

10640 Saint Mathias Road
Brainerd MN 56401

Status: Coming Soon

Description:

This very well maintained three bed/ three bath home right on St Mathias Rd is a must see! The property features updated flooring, many new windows, gutter guards, an open floor plan, primary suite, full basement complete with a wet bar, an extra room that just needs egress, and so much more! Outside, you will enjoy the large back deck, the attached 2 car garage, tons of mature trees, and privacy yet close to town! Additionally, the oversized heated/insulated detached garage is perfect for your projects and/or extra storage. The property truly has it all and is ready for the next owner to enjoy. Schedule Your Showing Today!

Additional Details:

Year Built	1988
Lot Acres	6
Lot Dimensions	205x234x651x399x527
Garage Stalls	6
School District	181
Taxes	\$2,504
Taxes with Assessments	\$2,504
Tax Year	2025

Additional Features:

Basement: Block, Drain Tiled, Finished, Full, Sump Pump **Fuel:** Electric, Propane **Garage:** 6 **Heat:** Dual Fuel/Off Peak, Forced Air **Sewer:** Private Sewer, Tank with Drainage Field **Water:** 4-Inch Submersible, Drilled, Well **Air Conditioning:** Central Air

Driving Directions:

Old 371 South from Brainerd to south on Saint Mathias Rd to sign on left



Listed By:
eXp Realty

Affinity Real Estate Inc. participates in the Regional Multiple Listing Service of Minnesota, Inc Broker Reciprocity (sm) program, allowing us to display other broker's listings on our website. All properties are subject to prior sale, change or withdrawal.



Call Affinity Real Estate

218-237-3333

info@affinityrealestate.com



Affinity Real Estate - 600 Park Avenue South - Park Rapids MN 56470



website: www.AffinityRealEstate.com | email: info@affinityrealestate.com | office: 218-237-3333 | fax:218-237-3377



\$439,900
MLS 7069115 Residential
10640 Saint Mathias Road
Brainerd MN 56401



website: www.AffinityRealEstate.com | email: info@affinityrealestate.com | office: 218-237-3333 | fax: 218-237-3377

Affinity
REAL ESTATE INC

\$439,900
MLS 7069115 Residential
10640 Saint Mathias Road
Brainerd MN 56401



website: www.AffinityRealEstate.com | email: info@affinityrealestate.com | office: 218-237-3333 | fax: 218-237-3377



\$439,900
MLS 7069115 Residential
10640 Saint Mathias Road
Brainerd MN 56401



website: www.AffinityRealEstate.com | email: info@affinityrealestate.com | office: 218-237-3333 | fax:218-237-3377

Affinity
REAL ESTATE INC

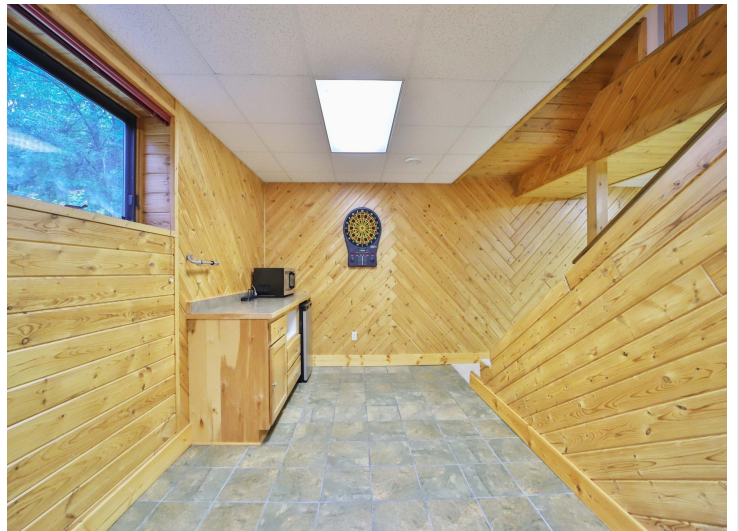
\$439,900
MLS 7069115 Residential
10640 Saint Mathias Road
Brainerd MN 56401



website: www.AffinityRealEstate.com | email: info@affinityrealestate.com | office: 218-237-3333 | fax:218-237-3377



\$439,900
MLS 7069115 Residential
10640 Saint Mathias Road
Brainerd MN 56401



website: www.AffinityRealEstate.com | email: info@affinityrealestate.com | office: 218-237-3333 | fax:218-237-3377

Affinity
REAL ESTATE INC

\$439,900
MLS 7069115 Residential
10640 Saint Mathias Road
Brainerd MN 56401



website: www.AffinityRealEstate.com | email: info@affinityrealestate.com | office: 218-237-3333 | fax:218-237-3377

Affinity
REAL ESTATE INC

\$439,900
MLS 7069115 Residential
10640 Saint Mathias Road
Brainerd MN 56401



website: www.AffinityRealEstate.com | email: info@affinityrealestate.com | office: 218-237-3333 | fax:218-237-3377

Affinity
REAL ESTATE INC

\$439,900
MLS 7069115 Residential
10640 Saint Mathias Road
Brainerd MN 56401



website: www.AffinityRealEstate.com | email: info@affinityrealestate.com | office: 218-237-3333 | fax:218-237-3377

Affinity
REAL ESTATE INC

\$439,900
MLS 7069115 Residential
10640 Saint Mathias Road
Brainerd MN 56401



website: www.AffinityRealEstate.com | email: info@affinityrealestate.com | office: 218-237-3333 | fax:218-237-3377



\$439,900
MLS 7069115 Residential
10640 Saint Mathias Road
Brainerd MN 56401



website: www.AffinityRealEstate.com | email: info@affinityrealestate.com | office: 218-237-3333 | fax:218-237-3377

Affinity
REAL ESTATE INC

\$439,900
MLS 7069115 Residential
10640 Saint Mathias Road
Brainerd MN 56401



website: www.AffinityRealEstate.com | email: info@affinityrealestate.com | office: 218-237-3333 | fax:218-237-3377



\$439,900
MLS 7069115 Residential
10640 Saint Mathias Road
Brainerd MN 56401



website: www.AffinityRealEstate.com | email: info@affinityrealestate.com | office: 218-237-3333 | fax:218-237-3377



\$439,900
MLS 7069115 Residential
10640 Saint Mathias Road
Brainerd MN 56401