



MLS 7069178 Land

\$149,900

2.3 Acres
Raw Land

33235 Aspen Lane
Motley MN 56466

Status: Active

Description:

Rare opportunity with 12 separate lots offering endless potential in a prime recreational area near Crookneck Lake, Lake Alexander, and Lake Shamineau. Property features a shallow well and an old cabin already on site, making it a great option for a future getaway, camping base, or new development project. Enjoy the freedom of no covenants or building restrictions, giving you flexibility to build, divide, or use the property to fit your vision. Great location for fishing, boating, and all-season outdoor recreation.

Additional Details:

Year Built	1982
Lot Acres	2.3
Lot Dimensions	65x135
School District	2170
Taxes	\$1,406
Taxes with Assessments	\$1,406
Tax Year	2026

Additional Features:

Driving Directions:

From MN-210 W: Turn left onto River St, continue onto Hwy 1, tur right onto Co 203, continue onto 330th St, turn right onto Aspen Ln. Property will be on the right, look for sign.



Listed By:
eXp Realty

Affinity Real Estate Inc. participates in the Regional Multiple Listing Service of Minnesota, Inc Broker Reciprocity (sm) program, allowing us to display other broker's listings on our website. All properties are subject to prior sale, change or withdrawal.



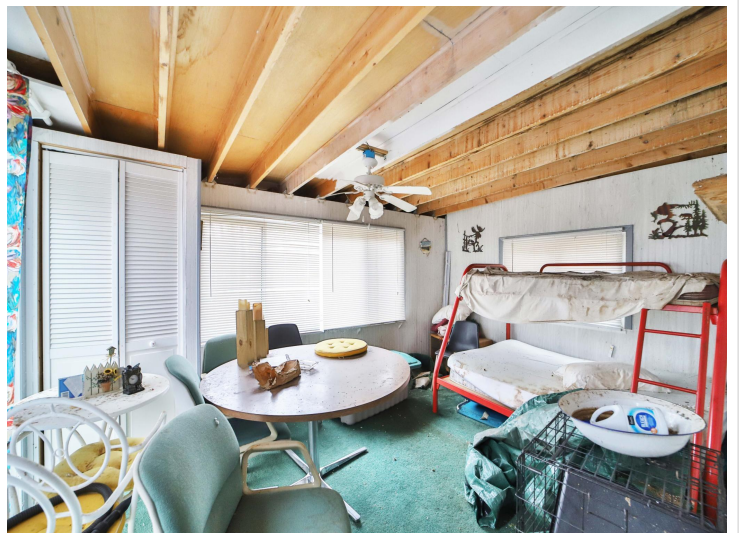
Call Affinity Real Estate

218-237-3333

info@affinityrealestate.com



Affinity Real Estate - 600 Park Avenue South - Park Rapids MN 56470



website: www.AffinityRealEstate.com | email: info@affinityrealestate.com | office: 218-237-3333 | fax:218-237-3377

Affinity
REAL ESTATE INC

\$149,900
MLS 7069178 Land
33235 Aspen Lane
Motley MN 56466



website: www.AffinityRealEstate.com | email: info@affinityrealestate.com | office: 218-237-3333 | fax:218-237-3377

Affinity
REAL ESTATE INC

\$149,900
MLS 7069178 Land
33235 Aspen Lane
Motley MN 56466



website: www.AffinityRealEstate.com | email: info@affinityrealestate.com | office: 218-237-3333 | fax:218-237-3377



\$149,900
MLS 7069178 Land
33235 Aspen Lane
Motley MN 56466