



MLS 7069184 Lake Land

**\$150,000**

**Description:**

Picturesque setting of 25 acres overlooking the Moose River. Just under 10 minutes south of Hill City and easy access off Highway 169. Build your dream home/cabin or simply use for recreation/hunting. Close proximity to the Soo Line ATV Trail, golf courses, and Lakes. Enjoy your privacy while being close to the conveniences of the modern world.

**Additional Details:**

Lot Acres	25
Lot Dimensions	IRR
School District	2
Taxes	\$136
Taxes with Assessments	\$136
Tax Year	2026

**Additional Features:**

**Driving Directions:**

From MN-210 E: slight right toward Co Rd 12, continue to stay on Co Rd 12 and follow Great River Rd. From Aitkin, take US-169 N, turn right onto 600th St, lot will be on the left at the corner of 600th St and 350th Pl.



Listed By:  
eXp Realty

Affinity Real Estate Inc. participates in the Regional Multiple Listing Service of Minnesota, Inc Broker Reciprocity (sm) program, allowing us to display other broker's listings on our website. All properties are subject to prior sale, change or withdrawal.



**Call Affinity Real Estate**

**218-237-3333**

**info@affinityrealestate.com**



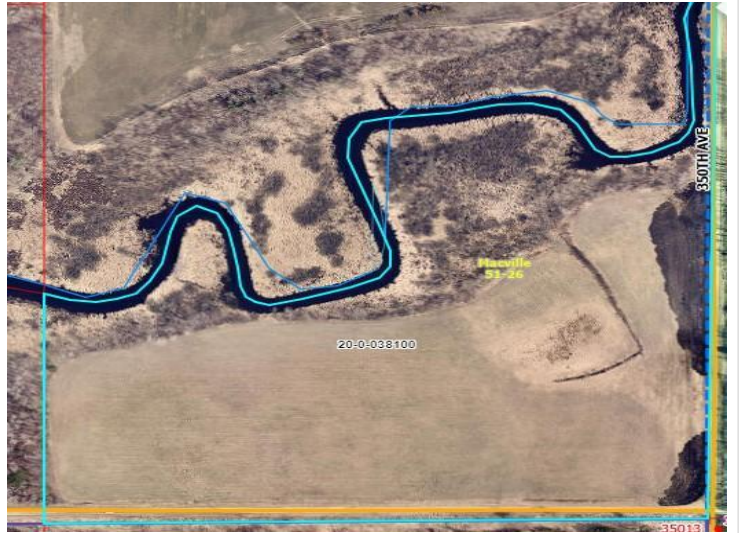
**Affinity Real Estate - 600 Park Avenue South - Park Rapids MN 56470**



website: [www.AffinityRealEstate.com](http://www.AffinityRealEstate.com) | email: [info@affinityrealestate.com](mailto:info@affinityrealestate.com) | office: 218-237-3333 | fax:218-237-3377



**\$150,000**  
MLS 7069184 Lake Land  
TBD 600th Street  
Hill City MN 55748



website: [www.AffinityRealEstate.com](http://www.AffinityRealEstate.com) | email: [info@affinityrealestate.com](mailto:info@affinityrealestate.com) | office: 218-237-3333 | fax:218-237-3377



**\$150,000**  
MLS 7069184 Lake Land  
TBD 600th Street  
Hill City MN 55748