



MLS 7069193 Lake Land

\$189,900

Description:

Discover the perfect getaway with this stunning Shell River lot featuring a charming log cabin and a relaxing sauna. With a new well and septic permit already in place, this property boasts over 580 feet of pristine river frontage. Enjoy the tranquility of nature just minutes from Nevis, Park Rapids, and the beautiful Huntersville State Forest—ideal for ATV and side-by-side rides, fishing adventures, and hunting excursions. Your dream outdoor oasis awaits!

Additional Details:

Lot Acres	2.5
Lot Dimensions	Irregular
School District	308
Taxes	\$311
Taxes with Assessments	\$556
Tax Year	2026

Additional Features:

Driving Directions:

From Nevis head South on County 13 approximately 9 miles to the property on the right.



Listed By:
Wolff & Simon Real Estate

Affinity Real Estate Inc. participates in the Regional Multiple Listing Service of Minnesota, Inc Broker Reciprocity (sm) program, allowing us to display other broker's listings on our website. All properties are subject to prior sale, change or withdrawal.



Call Affinity Real Estate

218-237-3333

info@affinityrealestate.com



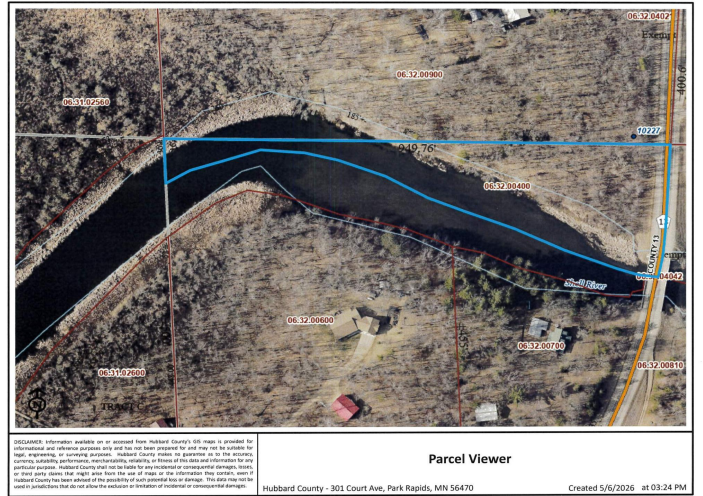
Affinity Real Estate - 600 Park Avenue South - Park Rapids MN 56470



website: www.AffinityRealEstate.com | email: info@affinityrealestate.com | office: 218-237-3333 | fax:218-237-3377

Affinity
REAL ESTATE INC

\$189,900
MLS 7069193 Lake Land
10227 Cr-13
Menahga MN 56464



website: www.AffinityRealEstate.com | email: info@affinityrealestate.com | office: 218-237-3333 | fax: 218-237-3377



\$189,900
 MLS 7069193 Lake Land
 10227 Cr-13
 Menahga MN 56464