



MLS 7069232 Lake Home

\$539,900

1,978 sq ft
4 bedrooms
2 baths

14783 Big Stony Drive
Park Rapids MN 56470

Waterfront: Big Stony

Status: Coming Soon

Description:

This exceptional property features two cabins situated on 149 feet of level lakeshore, complete with a sandy beach and 2.38 acres of privacy. The lakeside cabin, positioned right at the water's edge, includes 1 bedroom, 1 bathroom, kitchen, dining, and living areas, and is equipped with a newer air-source heat pump and fireplace for comfort.

The 2nd cabin offers 3 bedrooms finished in knotty pine, a cozy great room, and an attached 20x30 garage. Complete with a detached single garage, dock, and a pontoon boat. This is a must-see for anyone looking to enjoy lakeside living! Room count is for the seasonal cabin and year-round home combined. Room measurements for seasonal cabin:

Screen Porch: 13.5x11.7

Bedroom: 8.9x11.5

Kitchen/Dining: 13x17

Living Room: 13x15.8

Seasonal cabin year built is 1950.

Additional Details:

Year Built	2001
Lot Acres	2.38
Lot Dimensions	149x683x142x729
Garage Stalls	2
School District	309
Taxes	\$3,618
Taxes with Assessments	\$3,618
Tax Year	2025

Additional Features:

Basement: Other **Fuel:** Electric, Propane **Garage:** 2 **Heat:** Ductless Mini-Split, In-Floor Heating **Sewer:** Private Sewer, Tank with Drainage Field **Water:** 4-Inch Submersible, Private **Air Conditioning:** Window Unit(s)

Driving Directions:

From 34/71 in Park Rapids, East on 34 to a right on County 11. Follow to a left on 140th St. Continue on Big Stony Dr. to property on left.



Listed By:
Wolff & Simon Real Estate

Affinity Real Estate Inc. participates in the Regional Multiple Listing Service of Minnesota, Inc Broker Reciprocity (sm) program, allowing us to display other broker's listings on our website. All properties are subject to prior sale, change or withdrawal.



Call Affinity Real Estate

218-237-3333

info@affinityrealestate.com



Affinity Real Estate - 600 Park Avenue South - Park Rapids MN 56470



website: www.AffinityRealEstate.com | email: info@affinityrealestate.com | office: 218-237-3333 | fax:218-237-3377

Affinity
REAL ESTATE INC

\$539,900
MLS 7069232 Lake Home
14783 Big Stony Drive
Park Rapids MN 56470



website: www.AffinityRealEstate.com | email: info@affinityrealestate.com | office: 218-237-3333 | fax: 218-237-3377

Affinity
REAL ESTATE INC

\$539,900
MLS 7069232 Lake Home
14783 Big Stony Drive
Park Rapids MN 56470



website: www.AffinityRealEstate.com | email: info@affinityrealestate.com | office: 218-237-3333 | fax:218-237-3377

Affinity
REAL ESTATE INC

\$539,900
MLS 7069232 Lake Home
14783 Big Stony Drive
Park Rapids MN 56470



website: www.AffinityRealEstate.com | email: info@affinityrealestate.com | office: 218-237-3333 | fax: 218-237-3377

Affinity
REAL ESTATE INC

\$539,900
MLS 7069232 Lake Home
14783 Big Stony Drive
Park Rapids MN 56470



website: www.AffinityRealEstate.com | email: info@affinityrealestate.com | office: 218-237-3333 | fax:218-237-3377

Affinity
REAL ESTATE INC

\$539,900
MLS 7069232 Lake Home
14783 Big Stony Drive
Park Rapids MN 56470



website: www.AffinityRealEstate.com | email: info@affinityrealestate.com | office: 218-237-3333 | fax:218-237-3377



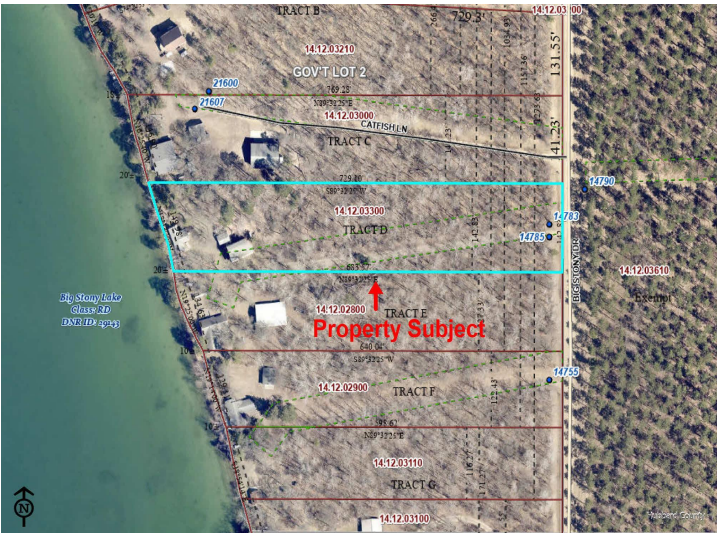
\$539,900
MLS 7069232 Lake Home
14783 Big Stony Drive
Park Rapids MN 56470



website: www.AffinityRealEstate.com | email: info@affinityrealestate.com | office: 218-237-3333 | fax:218-237-3377



\$539,900
MLS 7069232 Lake Home
14783 Big Stony Drive
Park Rapids MN 56470



website: www.AffinityRealEstate.com | email: info@affinityrealestate.com | office: 218-237-3333 | fax:218-237-3377



\$539,900
MLS 7069232 Lake Home
14783 Big Stony Drive
Park Rapids MN 56470