



MLS 7069312 Residential

**\$449,900**

2,932 sq ft  
4 bedrooms  
3 baths

25819 Sunset Valley Road  
Nisswa MN 56468

Status: Active

**Description:**

Welcome to your private Nisswa retreat! This 4 bedroom, 3 bathroom home offers the perfect blend of convenience and peaceful country living on 5 private acres. Located just minutes from downtown Nisswa, you'll enjoy easy access to local shops, restaurants, parks, and all the area amenities while still coming home to your own secluded setting. Inside, you'll find a warm and inviting layout featuring in-floor heat for year-round comfort, convenient main floor laundry, and a stunning stone fireplace that creates the perfect gathering space in the living room. The spacious kitchen and living areas are ideal for entertaining or relaxing with family and friends. The heated and insulated 2-stall garage provides excellent storage and functionality through every Minnesota season. Whether you're enjoying quiet mornings on the property, cozy evenings by the fire, or quick trips into town, this property delivers the best of both worlds — privacy, comfort, and location.

**Additional Details:**

Year Built	2008
Lot Acres	5.03
Lot Dimensions	310x708x310x707
Garage Stalls	2
School District	186
Taxes	\$1,824
Taxes with Assessments	\$1,824
Tax Year	2026

**Additional Features:**

**Basement:** Daylight/Lookout Windows, Egress Window(s), Finished **Fuel:** Electric, Wood **Garage:** 2 **Heat:** Hot Water, In-Floor Heating **Sewer:** Private Sewer, Tank with Drainage Field **Water:** Drilled, Well **Air Conditioning:** Central Air

**Driving Directions:**

From Nisswa, east on CR 18 to south on Sunset Valley Road to property on right.



Listed By:  
Coldwell Banker Realty

Affinity Real Estate Inc. participates in the Regional Multiple Listing Service of Minnesota, Inc Broker Reciprocity (sm) program, allowing us to display other broker's listings on our website. All properties are subject to prior sale, change or withdrawal.



**Call Affinity Real Estate**

**218-237-3333**

**info@affinityrealestate.com**



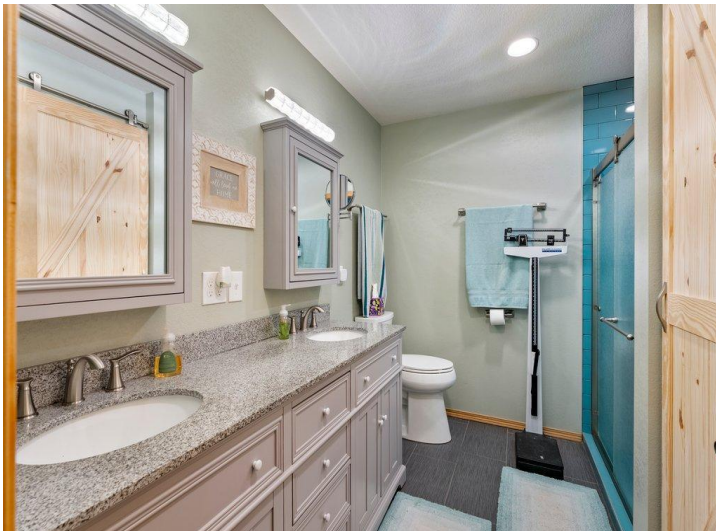
**Affinity Real Estate - 600 Park Avenue South - Park Rapids MN 56470**



website: [www.AffinityRealEstate.com](http://www.AffinityRealEstate.com) | email: [info@affinityrealestate.com](mailto:info@affinityrealestate.com) | office: 218-237-3333 | fax:218-237-3377

**Affinity**  
REAL ESTATE INC

**\$449,900**  
MLS 7069312 Residential  
25819 Sunset Valley Road  
Nisswa MN 56468



website: [www.AffinityRealEstate.com](http://www.AffinityRealEstate.com) | email: [info@affinityrealestate.com](mailto:info@affinityrealestate.com) | office: 218-237-3333 | fax:218-237-3377

**Affinity**  
REAL ESTATE INC

**\$449,900**  
MLS 7069312 Residential  
25819 Sunset Valley Road  
Nisswa MN 56468



website: [www.AffinityRealEstate.com](http://www.AffinityRealEstate.com) | email: [info@affinityrealestate.com](mailto:info@affinityrealestate.com) | office: 218-237-3333 | fax:218-237-3377

**Affinity**  
REAL ESTATE INC

**\$449,900**  
MLS 7069312 Residential  
25819 Sunset Valley Road  
Nisswa MN 56468



website: [www.AffinityRealEstate.com](http://www.AffinityRealEstate.com) | email: [info@affinityrealestate.com](mailto:info@affinityrealestate.com) | office: 218-237-3333 | fax:218-237-3377

**Affinity**  
REAL ESTATE INC

**\$449,900**  
MLS 7069312 Residential  
25819 Sunset Valley Road  
Nisswa MN 56468



website: [www.AffinityRealEstate.com](http://www.AffinityRealEstate.com) | email: [info@affinityrealestate.com](mailto:info@affinityrealestate.com) | office: 218-237-3333 | fax:218-237-3377



**\$449,900**  
MLS 7069312 Residential  
25819 Sunset Valley Road  
Nisswa MN 56468