



MLS 7069339 Lake Home

\$715,000

2,712 sq ft
5 bedrooms
2 baths

36859 Rodel Trail
Richville MN 56576

Waterfront: Dead Lake (56038300)

Status: Active

Description:

Private lakefront retreat on Dead Lake – 200+ feet of shoreline & endless recreation! Experience the best of Otter Tail lakes country with this stunning 5-bedroom, 2-bath lake home on Dead Lake—one of the area’s premier recreational lakes known for exceptional fishing and year-round enjoyment. Set on a private 1.87-acre cul-de-sac lot with 205 feet of shoreline and a deep 400-foot lot, this property offers space, privacy, and breathtaking lake views.

Built in 1984, the home welcomes you with beautiful landscaping and a charming covered porch. Inside, the main living area features soaring pine-vaulted ceilings, a cozy electric fireplace, and a stunning lake view. The main level includes three bedrooms and a full bath with a whirlpool tub, while the lower level offers two additional bedrooms, a ¾ bath with a walk-in shower, a family room, laundry, and plenty of storage. A spacious breezeway connects the home to the heated, insulated 2.5-stall garage—perfect for year-round convenience. Outside, enjoy four versatile outbuildings including a fully insulated studio shed with electricity, barn shed, play house, and a lakeside storage shed with a porch right at the water’s edge. Additional features include central air, durable steel siding, an arsenic mitigation system, drain tile system, and ample storage throughout. Whether you’re casting a line at sunrise, boating all afternoon, or cozying up by the fire in the winter, this property offers the perfect blend of comfort, recreation, and natural beauty.

Additional Details:

Year Built	1984
Lot Acres	1.864
Lot Dimensions	205 x 400
Garage Stalls	2.5
School District	549
Taxes	\$4,611
Taxes with Assessments	\$4,696
Tax Year	2026

Additional Features:

Fuel: Electric, Propane **Heat:** Baseboard, Forced Air, Fireplace(s)

Driving Directions:

From Underwood, take Cty Hwy 35 north for about 6 miles, turn right onto County Road 39 at about 2.7 miles, turn left onto County Road 39 at about 1.5 miles, take a right onto Rodel Drive and go .3 miles to Rodel Trail.



Call Affinity Real Estate

218-237-3333

info@affinityrealestate.com



Affinity Real Estate - 600 Park Avenue South - Park Rapids MN 56470



website: www.AffinityRealEstate.com | email: info@affinityrealestate.com | office: 218-237-3333 | fax:218-237-3377

Affinity
REAL ESTATE INC

\$715,000
MLS 7069339 Lake Home
36859 Rodel Trail
Richville MN 56576



website: www.AffinityRealEstate.com | email: info@affinityrealestate.com | office: 218-237-3333 | fax: 218-237-3377

Affinity
REAL ESTATE INC

\$715,000
MLS 7069339 Lake Home
36859 Rodel Trail
Richville MN 56576



website: www.AffinityRealEstate.com | email: info@affinityrealestate.com | office: 218-237-3333 | fax: 218-237-3377

Affinity
REAL ESTATE INC

\$715,000
MLS 7069339 Lake Home
36859 Rodel Trail
Richville MN 56576



website: www.AffinityRealEstate.com | email: info@affinityrealestate.com | office: 218-237-3333 | fax: 218-237-3377

Affinity
REAL ESTATE INC

\$715,000
MLS 7069339 Lake Home
36859 Rodel Trail
Richville MN 56576



website: www.AffinityRealEstate.com | email: info@affinityrealestate.com | office: 218-237-3333 | fax:218-237-3377



\$715,000
MLS 7069339 Lake Home
36859 Rodel Trail
Richville MN 56576



website: www.AffinityRealEstate.com | email: info@affinityrealestate.com | office: 218-237-3333 | fax:218-237-3377

Affinity
REAL ESTATE INC

\$715,000
MLS 7069339 Lake Home
36859 Rodel Trail
Richville MN 56576



website: www.AffinityRealEstate.com | email: info@affinityrealestate.com | office: 218-237-3333 | fax:218-237-3377

Affinity
REAL ESTATE INC

\$715,000
MLS 7069339 Lake Home
36859 Rodel Trail
Richville MN 56576



website: www.AffinityRealEstate.com | email: info@affinityrealestate.com | office: 218-237-3333 | fax:218-237-3377



\$715,000
MLS 7069339 Lake Home
36859 Rodel Trail
Richville MN 56576



website: www.AffinityRealEstate.com | email: info@affinityrealestate.com | office: 218-237-3333 | fax: 218-237-3377

Affinity
REAL ESTATE INC

\$715,000
MLS 7069339 Lake Home
36859 Rodel Trail
Richville MN 56576



website: www.AffinityRealEstate.com | email: info@affinityrealestate.com | office: 218-237-3333 | fax:218-237-3377



\$715,000
MLS 7069339 Lake Home
36859 Rodel Trail
Richville MN 56576



website: www.AffinityRealEstate.com | email: info@affinityrealestate.com | office: 218-237-3333 | fax:218-237-3377



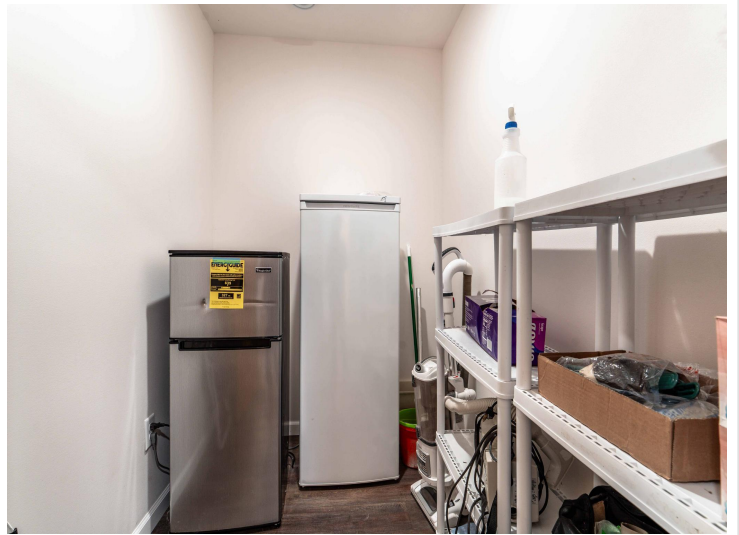
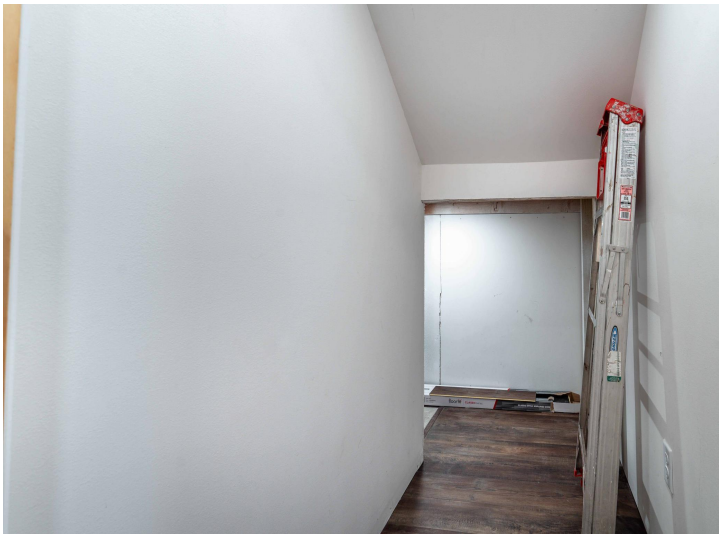
\$715,000
MLS 7069339 Lake Home
36859 Rodel Trail
Richville MN 56576



website: www.AffinityRealEstate.com | email: info@affinityrealestate.com | office: 218-237-3333 | fax:218-237-3377



\$715,000
MLS 7069339 Lake Home
36859 Rodel Trail
Richville MN 56576



website: www.AffinityRealEstate.com | email: info@affinityrealestate.com | office: 218-237-3333 | fax: 218-237-3377

Affinity
REAL ESTATE INC

\$715,000
MLS 7069339 Lake Home
36859 Rodel Trail
Richville MN 56576



website: www.AffinityRealEstate.com | email: info@affinityrealestate.com | office: 218-237-3333 | fax:218-237-3377

Affinity
REAL ESTATE INC

\$715,000
MLS 7069339 Lake Home
36859 Rodel Trail
Richville MN 56576



website: www.AffinityRealEstate.com | email: info@affinityrealestate.com | office: 218-237-3333 | fax:218-237-3377



\$715,000
MLS 7069339 Lake Home
36859 Rodel Trail
Richville MN 56576



website: www.AffinityRealEstate.com | email: info@affinityrealestate.com | office: 218-237-3333 | fax:218-237-3377

Affinity
REAL ESTATE INC

\$715,000
MLS 7069339 Lake Home
36859 Rodel Trail
Richville MN 56576



website: www.AffinityRealEstate.com | email: info@affinityrealestate.com | office: 218-237-3333 | fax:218-237-3377

Affinity
REAL ESTATE INC

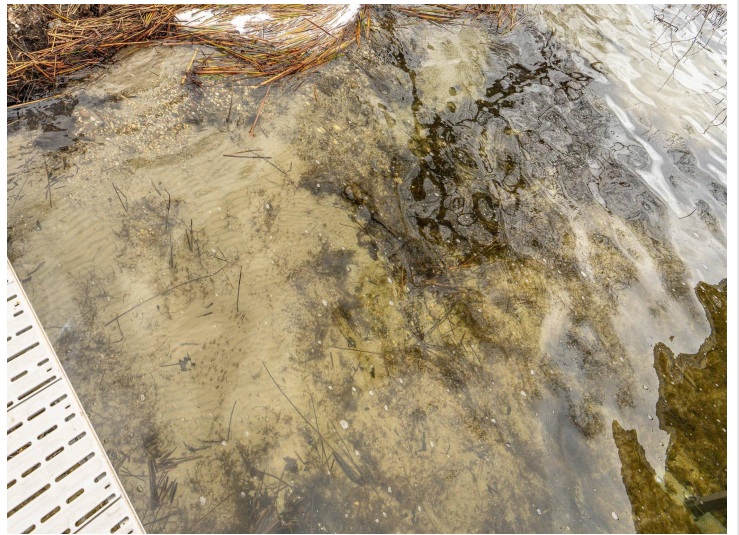
\$715,000
MLS 7069339 Lake Home
36859 Rodel Trail
Richville MN 56576



website: www.AffinityRealEstate.com | email: info@affinityrealestate.com | office: 218-237-3333 | fax:218-237-3377

Affinity
REAL ESTATE INC

\$715,000
MLS 7069339 Lake Home
36859 Rodel Trail
Richville MN 56576



website: www.AffinityRealEstate.com | email: info@affinityrealestate.com | office: 218-237-3333 | fax:218-237-3377

Affinity
REAL ESTATE INC

\$715,000
MLS 7069339 Lake Home
36859 Rodel Trail
Richville MN 56576



website: www.AffinityRealEstate.com | email: info@affinityrealestate.com | office: 218-237-3333 | fax: 218-237-3377

Affinity
REAL ESTATE INC

\$715,000
MLS 7069339 Lake Home
36859 Rodel Trail
Richville MN 56576