



MLS 7069350 Lake Home

\$650,000

1,017 sq ft
2 bedrooms
1 baths

25641 Pierce Lane
Pelican Rapids MN 56572

Waterfront: Lida

Status: Active

Description:

Spectacular lake views set the stage for this stunning fully furnished cabin on one of the most sought-after beaches on Lake Lida. Enjoy 50 feet of pristine shoreline with a sandy lake bottom, perfect for swimming, boating, and making the most of lake life all summer long. Inside, you'll find vaulted ceilings with warm knotty pine finishes, a natural cut stone fireplace, and an inviting open-concept kitchen, dining, and living area designed for comfortable lakeside living. Nestled on a spacious lot that has been meticulously maintained, the property also features a beautifully updated covered porch, a large storage shed, and a detached garage with approximately 400 square feet of additional living space complete with a bathroom and wet bar. Whether you're looking for a front-row seat to breathtaking sunsets, relaxing days on the water, or endless lakeside memories, this cabin is a rare opportunity to own a piece of lakefront paradise. Schedule your private showing today!

Additional Details:

Year Built	1965
Lot Acres	0.34
Lot Dimensions	50 x 200
Garage Stalls	1
School District	548
Taxes	\$2,736
Taxes with Assessments	\$2,736
Tax Year	2025

Additional Features:

Basement: Crawl Space **Fuel:** Electric **Garage:** 1 **Heat:** Ductless Mini-Split **Sewer:** Holding Tank **Water:** Well **Air Conditioning:** Ductless Mini-Split

Driving Directions:

Go to google maps.



Listed By:
Trilogy Real Estate

Affinity Real Estate Inc. participates in the Regional Multiple Listing Service of Minnesota, Inc Broker Reciprocity (sm) program, allowing us to display other broker's listings on our website. All properties are subject to prior sale, change or withdrawal.



Call Affinity Real Estate

218-237-3333

info@affinityrealestate.com



Affinity Real Estate - 600 Park Avenue South - Park Rapids MN 56470



website: www.AffinityRealEstate.com | email: info@affinityrealestate.com | office: 218-237-3333 | fax:218-237-3377

Affinity
REAL ESTATE INC

\$650,000
MLS 7069350 Lake Home
25641 Pierce Lane
Pelican Rapids MN 56572



website: www.AffinityRealEstate.com | email: info@affinityrealestate.com | office: 218-237-3333 | fax: 218-237-3377

Affinity
REAL ESTATE INC

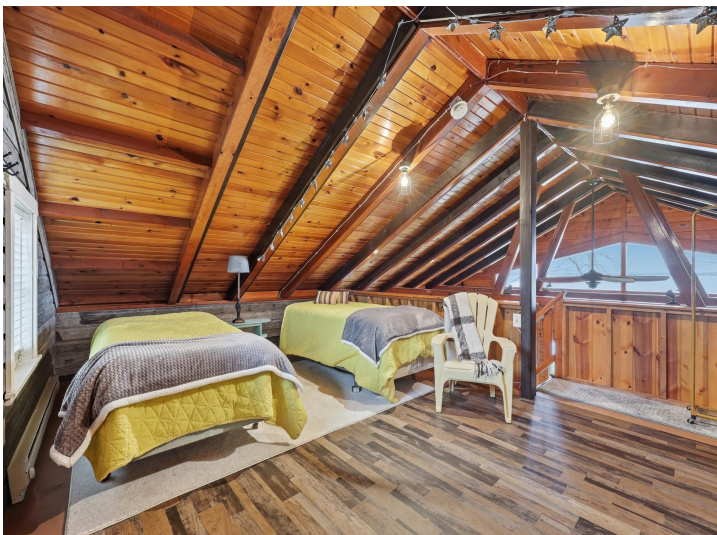
\$650,000
MLS 7069350 Lake Home
25641 Pierce Lane
Pelican Rapids MN 56572



website: www.AffinityRealEstate.com | email: info@affinityrealestate.com | office: 218-237-3333 | fax: 218-237-3377

Affinity
REAL ESTATE INC

\$650,000
MLS 7069350 Lake Home
25641 Pierce Lane
Pelican Rapids MN 56572



website: www.AffinityRealEstate.com | email: info@affinityrealestate.com | office: 218-237-3333 | fax:218-237-3377

Affinity
REAL ESTATE INC

\$650,000
MLS 7069350 Lake Home
25641 Pierce Lane
Pelican Rapids MN 56572



website: www.AffinityRealEstate.com | email: info@affinityrealestate.com | office: 218-237-3333 | fax:218-237-3377



\$650,000
MLS 7069350 Lake Home
25641 Pierce Lane
Pelican Rapids MN 56572



website: www.AffinityRealEstate.com | email: info@affinityrealestate.com | office: 218-237-3333 | fax:218-237-3377

Affinity
REAL ESTATE INC

\$650,000
MLS 7069350 Lake Home
25641 Pierce Lane
Pelican Rapids MN 56572



website: www.AffinityRealEstate.com | email: info@affinityrealestate.com | office: 218-237-3333 | fax: 218-237-3377

Affinity
REAL ESTATE INC

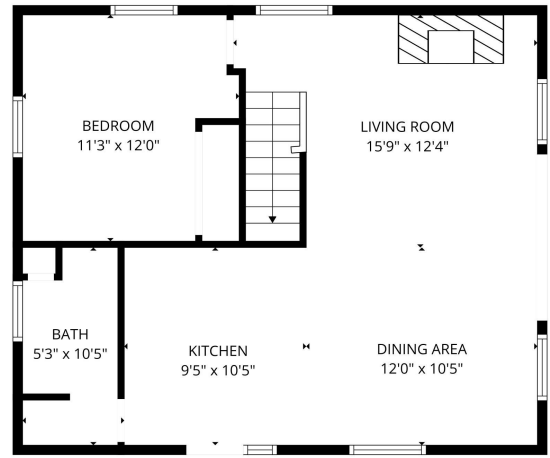
\$650,000
MLS 7069350 Lake Home
25641 Pierce Lane
Pelican Rapids MN 56572



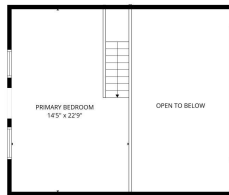
website: www.AffinityRealEstate.com | email: info@affinityrealestate.com | office: 218-237-3333 | fax:218-237-3377

Affinity
REAL ESTATE INC

\$650,000
MLS 7069350 Lake Home
25641 Pierce Lane
Pelican Rapids MN 56572



FLOOR PLAN CREATED BY CUBICASA APP. MEASUREMENTS DEEMED HIGHLY RELIABLE BUT NOT GUARANTEED.



1st floor

FLOOR PLAN CREATED BY CUBICASA APP. MEASUREMENTS DEEMED HIGHLY RELIABLE BUT NOT GUARANTEED.



website: www.AffinityRealEstate.com | email: info@affinityrealestate.com | office: 218-237-3333 | fax: 218-237-3377



\$650,000
 MLS 7069350 Lake Home
 25641 Pierce Lane
 Pelican Rapids MN 56572



website: www.AffinityRealEstate.com | email: info@affinityrealestate.com | office: 218-237-3333 | fax:218-237-3377



\$650,000
MLS 7069350 Lake Home
25641 Pierce Lane
Pelican Rapids MN 56572