



MLS 7069388 Residential

\$334,900

1,008 sq ft
2 bedrooms
2 baths

5169 Power Dam Road
Bemidji MN 56601

Status: Active

Description:

One level living on the edge of town! This 10ac property has a 2 bedroom home with an attached oversized 2 stall heated garage, 30x60 wired pole shed, and a 12x14 storage shed. New boiler system in 2025.

Additional Details:

Year Built	2007
Lot Acres	10
Lot Dimensions	622x704x625x696
Garage Stalls	2
School District	31
Taxes	\$3,515
Taxes with Assessments	\$3,515
Tax Year	2025

Additional Features:

Basement: None **Fuel:** Propane **Garage:** 2 **Heat:** Boiler, Fireplace(s), In-Floor Heating **Sewer:** Private Sewer **Water:** Private **Air Conditioning:** None

Driving Directions:

In Nymore - Lake Ave to right on Power Dam to property on the left.



Listed By:
Blackduck Realty

Affinity Real Estate Inc. participates in the Regional Multiple Listing Service of Minnesota, Inc Broker Reciprocity (sm) program, allowing us to display other broker's listings on our website. All properties are subject to prior sale, change or withdrawal.



Call Affinity Real Estate

218-237-3333

info@affinityrealestate.com



Affinity Real Estate - 600 Park Avenue South - Park Rapids MN 56470



website: www.AffinityRealEstate.com | email: info@affinityrealestate.com | office: 218-237-3333 | fax:218-237-3377



\$334,900
MLS 7069388 Residential
5169 Power Dam Road
Bemidji MN 56601



website: www.AffinityRealEstate.com | email: info@affinityrealestate.com | office: 218-237-3333 | fax:218-237-3377



\$334,900
MLS 7069388 Residential
5169 Power Dam Road
Bemidji MN 56601



website: www.AffinityRealEstate.com | email: info@affinityrealestate.com | office: 218-237-3333 | fax:218-237-3377



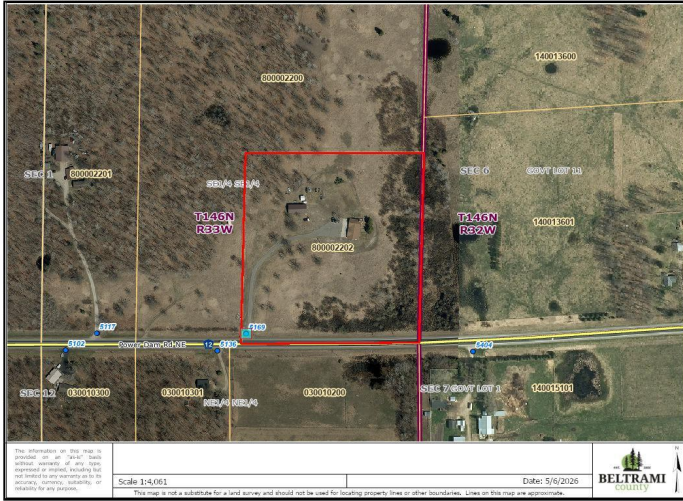
\$334,900
MLS 7069388 Residential
5169 Power Dam Road
Bemidji MN 56601



website: www.AffinityRealEstate.com | email: info@affinityrealestate.com | office: 218-237-3333 | fax:218-237-3377



\$334,900
MLS 7069388 Residential
5169 Power Dam Road
Bemidji MN 56601



website: www.AffinityRealEstate.com | email: info@affinityrealestate.com | office: 218-237-3333 | fax: 218-237-3377



\$334,900
 MLS 7069388 Residential
 5169 Power Dam Road
 Bemidji MN 56601