



MLS 7069514 Land

\$155,000

20.09 Acres
Raw Land

TBD Richmond Road
Pillager MN 56473

Status: Active

Description:

20+ acres of prime recreational land offering the perfect setting for hunting, exploring and outdoor enjoyment. Beautifully wooded, rich with wildlife habitat, peace and privacy of nature. Located in close proximity to state land. Easy drive, less than 30 minutes from the Brainerd Lakes Area. **BONUS OPPORTUNITY:** an additional 20+ acre parcel with a cabin is also available. Expand your dream setup! (MLS#7069050) Seller financing is available offering a flexible path to ownership!

Additional Details:

Lot Acres	20.09
Lot Dimensions	1332x678
School District	116
Taxes	\$612
Taxes with Assessments	\$612
Tax Year	2026

Additional Features:

Driving Directions:

From Pillager: State 210 SW, take Right onto County 1 SW, go about 4.8 miles. Turn Left onto Richmond Rd SW. Go about 1/2 mile. There will be a gate to access the property.



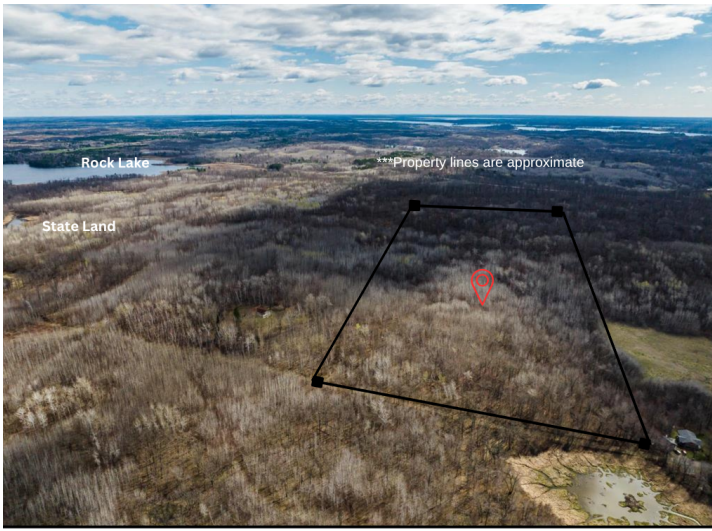
Listed By:
MOVE IT REAL ESTATE
GROUP/LAKEHOMES.COM
Affinity Real Estate Inc. participates in the Regional Multiple Listing Service of Minnesota, Inc Broker Reciprocity (sm) program, allowing us to display other broker's listings on our website. All properties are subject to prior sale, change or withdrawal.



Call Affinity Real Estate
218-237-3333
info@affinityrealestate.com



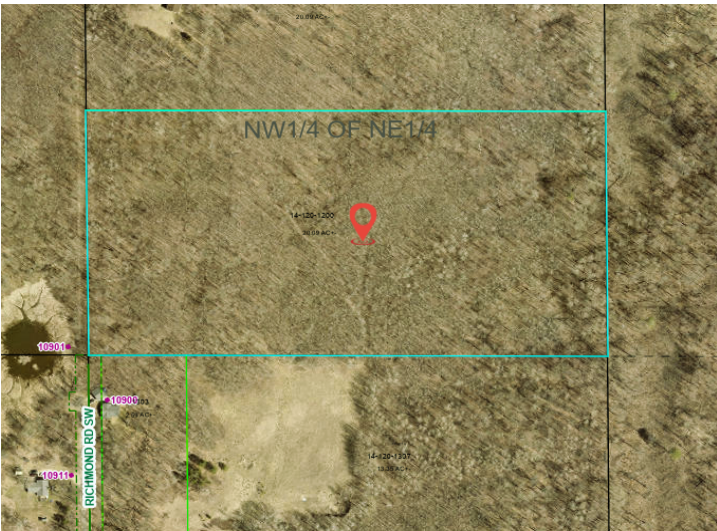
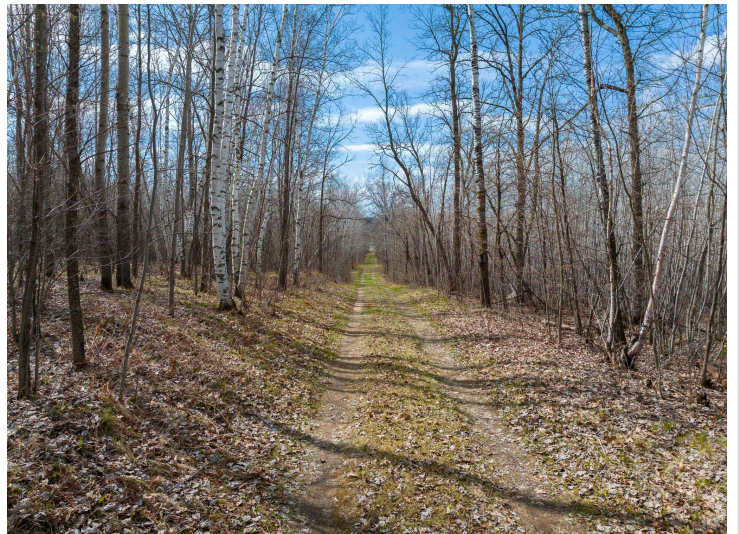
Affinity Real Estate - 600 Park Avenue South - Park Rapids MN 56470



website: www.AffinityRealEstate.com | email: info@affinityrealestate.com | office: 218-237-3333 | fax:218-237-3377



\$155,000
MLS 7069514 Land
TBD Richmond Road
Pillager MN 56473



website: www.AffinityRealEstate.com | email: info@affinityrealestate.com | office: 218-237-3333 | fax:218-237-3377



\$155,000
MLS 7069514 Land
TBD Richmond Road
Pillager MN 56473