



MLS 7069574 Land

\$15,500

0.83 Acres
Plat Designed

417 Cedar Street
Motley MN 56466

Status: Active

Description:

Build your future in the heart of Motley! This spacious approx. 0.83-acre lot offers a great opportunity for a new home, investment property, or future development within city limits. Conveniently located near local shops, restaurants, schools, and easy access to Hwy 10 for commuting. Enjoy the charm of small-town living while being surrounded by the lakes, trails, and outdoor recreation Central Minnesota is known for. Bring your vision and make this property your next project!

Additional Details:

Lot Acres	0.83
Lot Dimensions	120 x 300
School District	2170
Taxes	\$314
Taxes with Assessments	\$314
Tax Year	2025

Additional Features:

Driving Directions:

IN MOTLEY, GO LEFT (EAST) BY DAIRY QUEEN APPROXIMATELY 3 BLOCKS



Listed By:
Jeff Hagel

Affinity Real Estate Inc. participates in the Regional Multiple Listing Service of Minnesota, Inc Broker Reciprocity (sm) program, allowing us to display other broker's listings on our website. All properties are subject to prior sale, change or withdrawal.



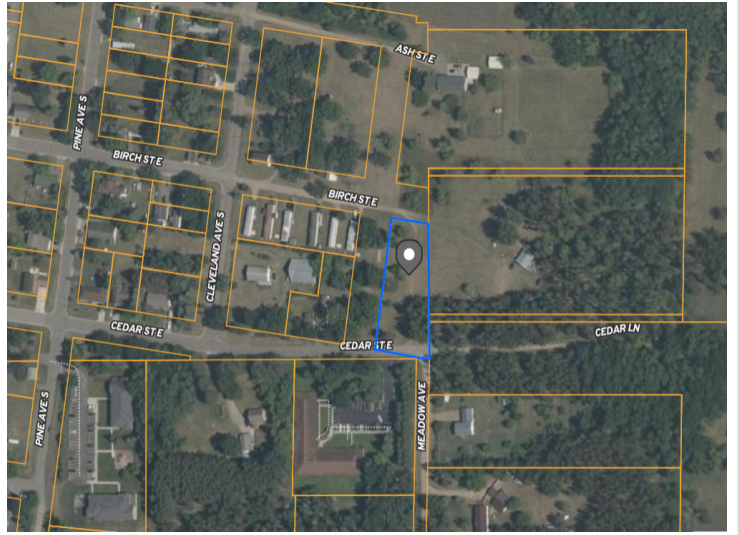
Call Affinity Real Estate

218-237-3333

info@affinityrealestate.com



Affinity Real Estate - 600 Park Avenue South - Park Rapids MN 56470



website: www.AffinityRealEstate.com | email: info@affinityrealestate.com | office: 218-237-3333 | fax:218-237-3377



\$15,500
MLS 7069574 Land
417 Cedar Street
Motley MN 56466