



MLS 7069604 Residential

**\$499,900**

1,483 sq ft  
3 bedrooms  
2 baths

15858 Old Stonebridge Trail  
Brainerd MN 56401

Status: Active

**Description:**

Build your dream home in the desirable Stonebridge neighborhood! This build-to-suit split foyer design offers the opportunity to personalize your new construction home while enjoying a fantastic location featuring a community walking trail surrounding the neighborhood lake. Planned features include a spacious 3-stall attached garage, forced air heating and central air conditioning, and luxury vinyl plank flooring throughout the main living areas. The main floor will offer vaulted ceilings, custom cabinetry, granite countertops, and an open-concept layout ideal for everyday living and entertaining. The primary suite features a private bath complete with a tile walk-in shower and walk-in closet, along with 2 additional bedrooms and a full bathroom on the main level. Potential for 3 additional bedrooms and full bath in lower level. Conveniently located just minutes from town while offering a peaceful neighborhood setting. Final finishes, colors, and pricing may vary based on buyer preferences and builder specifications.

**Additional Details:**

Year Built	2026
Lot Acres	0.47
Lot Dimensions	166x188x46x199
Garage Stalls	3
School District	181
Taxes	\$744
Taxes with Assessments	\$744
Tax Year	2025

**Additional Features:**

**Basement:** Full, Unfinished **Fuel:** Natural Gas **Garage:** 3 **Heat:** Forced Air **Sewer:** City Sewer - In Street **Water:** City Water - In Street **Air Conditioning:** Central Air

**Driving Directions:**

From Brainerd - East on Riverside Dr - Left on Ashmun Rd - Right on Old Stonebridge Trail



Listed By:  
NextHome Horizons

Affinity Real Estate Inc. participates in the Regional Multiple Listing Service of Minnesota, Inc Broker Reciprocity (sm) program, allowing us to display other broker's listings on our website. All properties are subject to prior sale, change or withdrawal.



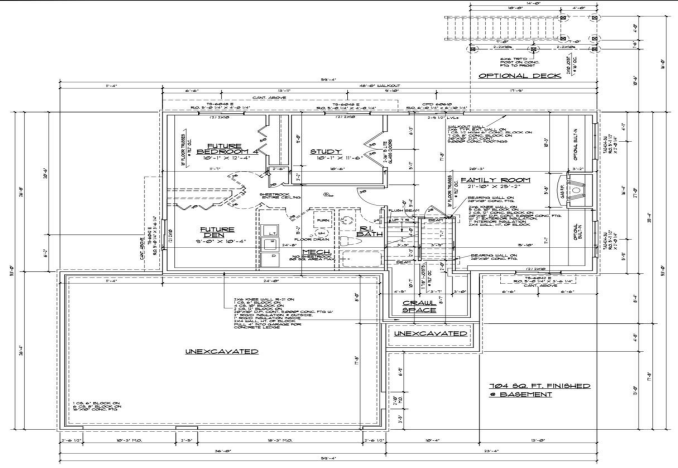
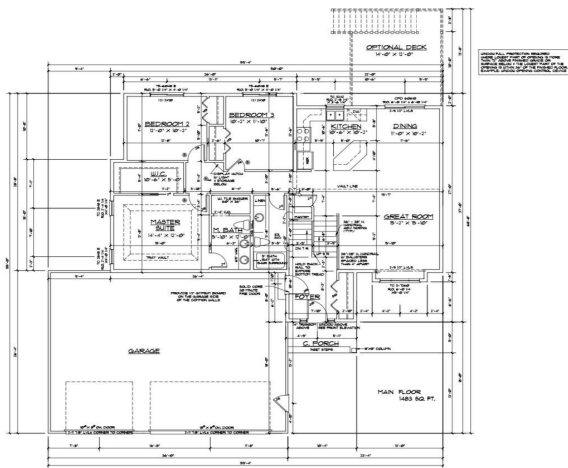
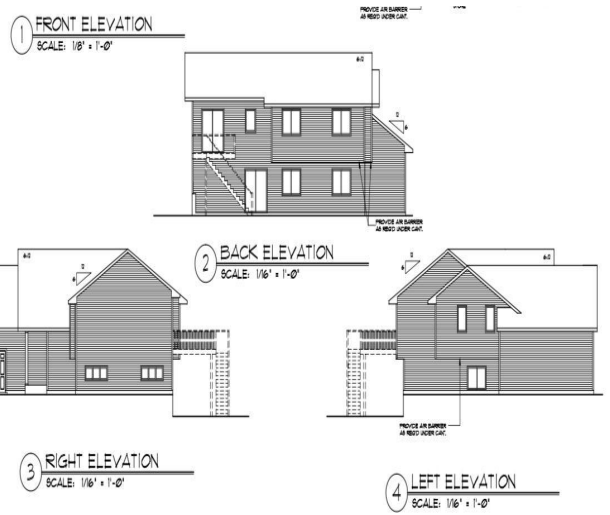
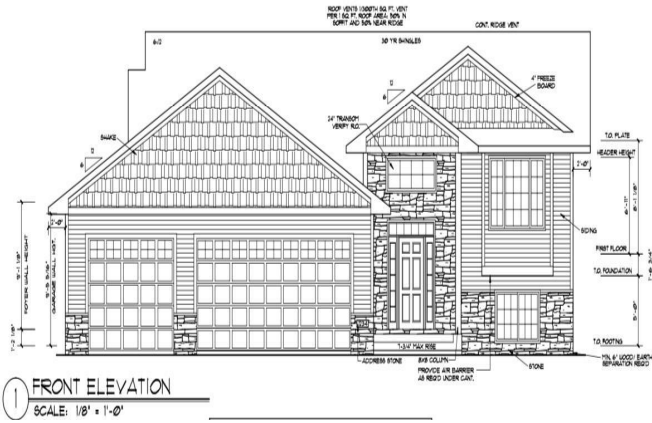
Call Affinity Real Estate

**218-237-3333**

[info@affinityrealestate.com](mailto:info@affinityrealestate.com)



Affinity Real Estate - 600 Park Avenue South - Park Rapids MN 56470



website: [www.AffinityRealEstate.com](http://www.AffinityRealEstate.com) | email: [info@affinityrealestate.com](mailto:info@affinityrealestate.com) | office: 218-237-3333 | fax: 218-237-3377



**\$499,900**  
 MLS 7069604 Residential  
 15858 Old Stonebridge Trail  
 Brainerd MN 56401

website: [www.AffinityRealEstate.com](http://www.AffinityRealEstate.com) | email: [info@affinityrealestate.com](mailto:info@affinityrealestate.com) | office: 218-237-3333 | fax:218-237-3377



**\$499,900**

MLS 7069604 Residential  
15858 Old Stonebridge Trail  
Brainerd MN 56401