



MLS 7069623 Residential

\$350,000

280 sq ft
1 bedrooms
1 baths

14443 County Road 1
Fifty Lakes MN 56448

Status: Active

Description:

Versatile opportunity to own a 50 x 60 (approx) pole shed with studio style living quarters in Fifty Lakes - ideally situated on nearly 3.5 acres of beautifully wooded high ground. Property is minutes from Crosslake and features a spacious pole shed with ample storage space making it perfect for a weekend getaway or year-round cozy residence. House all the toys needed for a true lake life experience! Plenty of opportunity to expand the living quarters or add another structure to the property – whether more storage or your dream home in the heart of the Brainerd Lakes Area. This nicely wooded parcel is sure to fit your needs whether you currently reside in Fifty Lakes, Crosslake, Emily – or if you are just getting started in the Lakes Area. Schedule your showing today!

Additional Details:

Year Built	1998
Lot Acres	3.42
Lot Dimensions	196 x 372 x 300 x 576
Garage Stalls	15
School District	2174
Taxes	\$1,051
Taxes with Assessments	\$1,076
Tax Year	2026

Additional Features:

Basement: None **Fuel:** Electric, Natural Gas **Garage:** 15 **Heat:** Forced Air **Sewer:** Tank with Drainage Field **Water:** 4-Inch Submersible, Drilled
Air Conditioning: Window Unit(s)

Driving Directions:

From Crosslake - North on #3 to West on #1 to property on left #14443 and for sale sign.



Listed By:
Northland Sotheby's International Realty

Affinity Real Estate Inc. participates in the Regional Multiple Listing Service of Minnesota, Inc Broker Reciprocity (sm) program, allowing us to display other broker's listings on our website. All properties are subject to prior sale, change or withdrawal.



Call Affinity Real Estate

218-237-3333

info@affinityrealestate.com



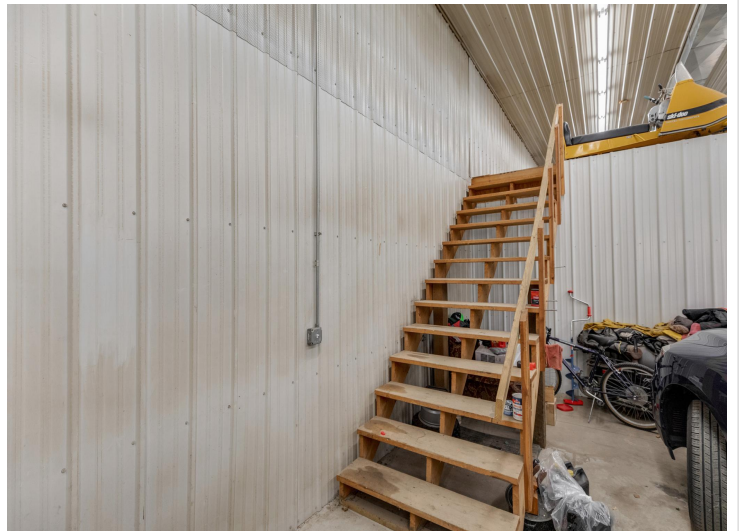
Affinity Real Estate - 600 Park Avenue South - Park Rapids MN 56470



website: www.AffinityRealEstate.com | email: info@affinityrealestate.com | office: 218-237-3333 | fax:218-237-3377



\$350,000
MLS 7069623 Residential
14443 County Road 1
Fifty Lakes MN 56448



website: www.AffinityRealEstate.com | email: info@affinityrealestate.com | office: 218-237-3333 | fax: 218-237-3377

Affinity
REAL ESTATE INC

\$350,000
MLS 7069623 Residential
14443 County Road 1
Fifty Lakes MN 56448



website: www.AffinityRealEstate.com | email: info@affinityrealestate.com | office: 218-237-3333 | fax: 218-237-3377

Affinity
REAL ESTATE INC

\$350,000
MLS 7069623 Residential
14443 County Road 1
Fifty Lakes MN 56448



website: www.AffinityRealEstate.com | email: info@affinityrealestate.com | office: 218-237-3333 | fax: 218-237-3377

Affinity
REAL ESTATE INC

\$350,000
MLS 7069623 Residential
14443 County Road 1
Fifty Lakes MN 56448



22280512 14443 COUNTY ROAD 1, FIFTY LAKES, MN, 56448



May 28, 2020 1:1,418
0 0.02 0.04 0.07 mi
0 0.03 0.06 0.11 km

website: www.AffinityRealEstate.com | email: info@affinityrealestate.com | office: 218-237-3333 | fax:218-237-3377



\$350,000
MLS 7069623 Residential
14443 County Road 1
Fifty Lakes MN 56448