



MLS 7069728 Land

\$184,900

0.56 Acres
Finished Lot(s)

1077 Shore Drive
Detroit Lakes MN 56501

Status: Active

Description:

Wooded lot on South Shore Drive in the city limits of Detroit Lakes. All city utilities are available at the curb. Just a stone's throw from Big Detroit Lake and close to the Public Access. Updated survey in 2020 and corners are marked. No specials or covenants, all building would be subject to city building codes. Beautiful building lot on over half an acre.

Additional Details:

Lot Acres	0.56
Lot Dimensions	90x270
School District	22
Taxes	\$402
Taxes with Assessments	\$408
Tax Year	2026

Additional Features:

Driving Directions:

From DL, East on Highway 10 to South Shore Drive to lot.



Listed By:
Lakeplace.com-Lakeshore & More

Affinity Real Estate Inc. participates in the Regional Multiple Listing Service of Minnesota, Inc Broker Reciprocity (sm) program, allowing us to display other broker's listings on our website. All properties are subject to prior sale, change or withdrawal.



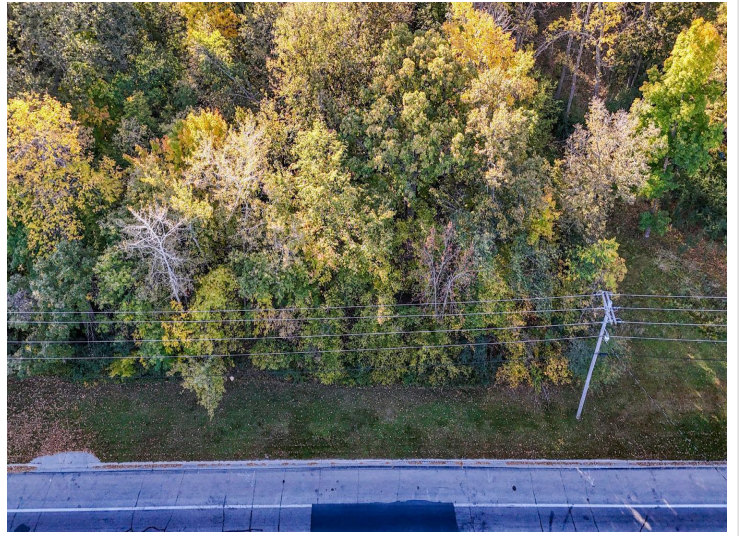
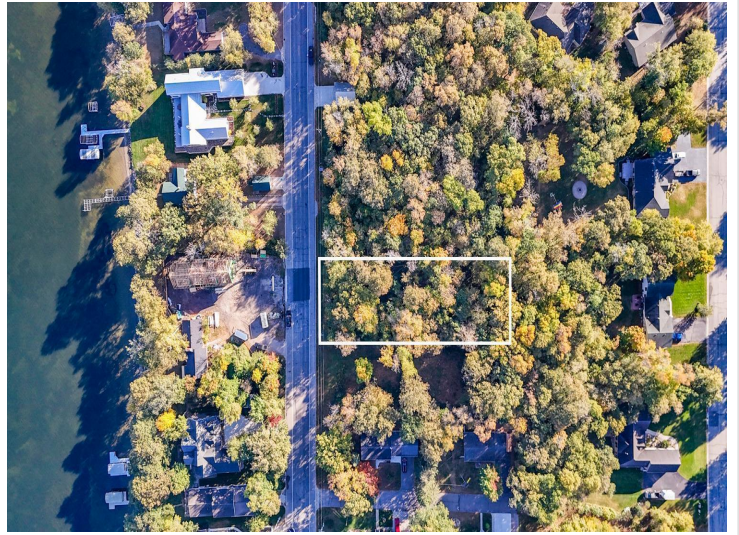
Call Affinity Real Estate

218-237-3333

info@affinityrealestate.com



Affinity Real Estate - 600 Park Avenue South - Park Rapids MN 56470



website: www.AffinityRealEstate.com | email: info@affinityrealestate.com | office: 218-237-3333 | fax:218-237-3377



\$184,900
MLS 7069728 Land
1077 Shore Drive
Detroit Lakes MN 56501



website: www.AffinityRealEstate.com | email: info@affinityrealestate.com | office: 218-237-3333 | fax:218-237-3377



\$184,900
MLS 7069728 Land
1077 Shore Drive
Detroit Lakes MN 56501