



MLS 7069806 Lake Home

\$429,000

2,290 sq ft
2 bedrooms
2 baths

13233 Wonder Green Lane
Bemidji MN 56601

Waterfront: Ose

Status: Coming Soon

Description:

Turn-key 2+BR, 2BA walk out has almost 8 wooded acres and is just minutes by boat away from Big Wolf and all the Cass Lake Chain offers. Custom cherry cabinetry and paneled ceiling, and quality decorative railings. Home has stunning views of the lake, both inside and out, perfect for viewing abundant wildlife! Expansive low maintenance deck, seamless steel siding, new roof, air source heat pump for efficient central heating/cooling with LP back up. If you are seeking extreme privacy, this end of the road lake acreage may be just what you are looking for.

Additional Details:

Year Built	1975
Lot Acres	7.92
Lot Dimensions	240'x1287'
Garage Stalls	2
School District	31
Taxes	\$2,573
Taxes with Assessments	\$2,764
Tax Year	2026

Additional Features:

Basement: Block, Finished, Full, Walkout **Fuel:** Electric, Propane **Garage:** 2 **Heat:** Dual Fuel/Off Peak, Forced Air, Fireplace(s), Heat Pump **Sewer:** Private Sewer, Septic System Compliant - Yes, Tank with Drainage Field **Water:** 4-Inch Submersible, Drilled, Private, Well **Air Conditioning:** Central Air, Heat Pump

Driving Directions:

Take Roosevelt Rd SE, right on Wonder Green Ln SE straight to 13233.



Listed By:
Century 21 Dickinson

Affinity Real Estate Inc. participates in the Regional Multiple Listing Service of Minnesota, Inc Broker Reciprocity (sm) program, allowing us to display other broker's listings on our website. All properties are subject to prior sale, change or withdrawal.



Call Affinity Real Estate

218-237-3333

info@affinityrealestate.com



Affinity Real Estate - 600 Park Avenue South - Park Rapids MN 56470



website: www.AffinityRealEstate.com | email: info@affinityrealestate.com | office: 218-237-3333 | fax:218-237-3377

Affinity
REAL ESTATE INC

\$429,000
MLS 7069806 Lake Home
13233 Wonder Green Lane
Bemidji MN 56601



website: www.AffinityRealEstate.com | email: info@affinityrealestate.com | office: 218-237-3333 | fax:218-237-3377



\$429,000
MLS 7069806 Lake Home
13233 Wonder Green Lane
Bemidji MN 56601



website: www.AffinityRealEstate.com | email: info@affinityrealestate.com | office: 218-237-3333 | fax:218-237-3377

Affinity
REAL ESTATE INC

\$429,000
MLS 7069806 Lake Home
13233 Wonder Green Lane
Bemidji MN 56601



website: www.AffinityRealEstate.com | email: info@affinityrealestate.com | office: 218-237-3333 | fax:218-237-3377



\$429,000
MLS 7069806 Lake Home
13233 Wonder Green Lane
Bemidji MN 56601



website: www.AffinityRealEstate.com | email: info@affinityrealestate.com | office: 218-237-3333 | fax:218-237-3377

Affinity
REAL ESTATE INC

\$429,000
MLS 7069806 Lake Home
13233 Wonder Green Lane
Bemidji MN 56601



website: www.AffinityRealEstate.com | email: info@affinityrealestate.com | office: 218-237-3333 | fax:218-237-3377

Affinity
REAL ESTATE INC

\$429,000
MLS 7069806 Lake Home
13233 Wonder Green Lane
Bemidji MN 56601



website: www.AffinityRealEstate.com | email: info@affinityrealestate.com | office: 218-237-3333 | fax:218-237-3377

Affinity
REAL ESTATE INC

\$429,000
MLS 7069806 Lake Home
13233 Wonder Green Lane
Bemidji MN 56601



website: www.AffinityRealEstate.com | email: info@affinityrealestate.com | office: 218-237-3333 | fax:218-237-3377



\$429,000
MLS 7069806 Lake Home
13233 Wonder Green Lane
Bemidji MN 56601



website: www.AffinityRealEstate.com | email: info@affinityrealestate.com | office: 218-237-3333 | fax:218-237-3377



\$429,000
MLS 7069806 Lake Home
13233 Wonder Green Lane
Bemidji MN 56601



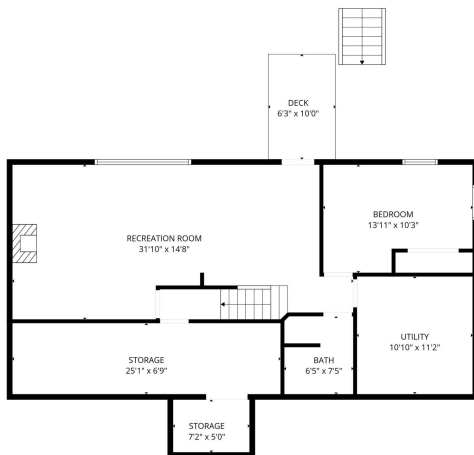
website: www.AffinityRealEstate.com | email: info@affinityrealestate.com | office: 218-237-3333 | fax:218-237-3377

Affinity
REAL ESTATE INC

\$429,000
MLS 7069806 Lake Home
13233 Wonder Green Lane
Bemidji MN 56601



FLOOR PLAN CREATED BY CUBICASA APP. MEASUREMENTS DEEMED HIGHLY RELIABLE BUT NOT GUARANTEED.



FLOOR PLAN CREATED BY CUBICASA APP. MEASUREMENTS DEEMED HIGHLY RELIABLE BUT NOT GUARANTEED.

website: www.AffinityRealEstate.com | email: info@affinityrealestate.com | office: 218-237-3333 | fax: 218-237-3377



\$429,000
 MLS 7069806 Lake Home
 13233 Wonder Green Lane
 Bemidji MN 56601