



MLS 7069921 Residential

\$189,900

1,773 sq ft
3 bedrooms
2 baths

708 Wisconsin Avenue
Staples MN 56479

Status: Active

Description:

Welcome home to this beautifully maintained 3 bedroom, 2 bathroom home in the heart of Staples! Featuring a spacious layout and timeless charm, this property offers a large kitchen with an abundance of cabinet space perfect for cooking, entertaining, and everyday living. Warm hardwood floors add character throughout the home, while the oversized primary bedroom includes a walk-in closet for added comfort and convenience. Relax and unwind in the inviting 3-season sunroom complete with a stunning tongue and groove wood ceiling, creating the perfect space to enjoy peaceful mornings or cozy evenings. Outside, you'll find a 3-stall insulated garage offering plenty of room for vehicles, toys, and storage, along with an additional storage shed for all your extra needs. This home combines functionality, warmth, and small-town living all in one fantastic package!

Additional Details:

Year Built	1902
Lot Acres	0.61
Lot Dimensions	50x144
Garage Stalls	3
School District	2170
Taxes	\$2,048
Taxes with Assessments	\$2,106
Tax Year	2026

Additional Features:

Basement: Block, Egress Window(s), Partially Finished **Fuel:** Natural Gas **Garage:** 3 **Heat:** Forced Air **Sewer:** City Sewer/Connected **Water:** City Water/Connected **Air Conditioning:** Central Air

Driving Directions:

From stoplight on US Hwy #10 in Staples turn south across railroad tracks turn left (east) on Wisconsin Avenue. Property on right.



Listed By:
LPT Realty, LLC.

Affinity Real Estate Inc. participates in the Regional Multiple Listing Service of Minnesota, Inc Broker Reciprocity (sm) program, allowing us to display other broker's listings on our website. All properties are subject to prior sale, change or withdrawal.



Call Affinity Real Estate

218-237-3333

info@affinityrealestate.com



Affinity Real Estate - 600 Park Avenue South - Park Rapids MN 56470



website: www.AffinityRealEstate.com | email: info@affinityrealestate.com | office: 218-237-3333 | fax: 218-237-3377

Affinity
REAL ESTATE INC

\$189,900
MLS 7069921 Residential
708 Wisconsin Avenue
Staples MN 56479



website: www.AffinityRealEstate.com | email: info@affinityrealestate.com | office: 218-237-3333 | fax: 218-237-3377

Affinity
REAL ESTATE INC

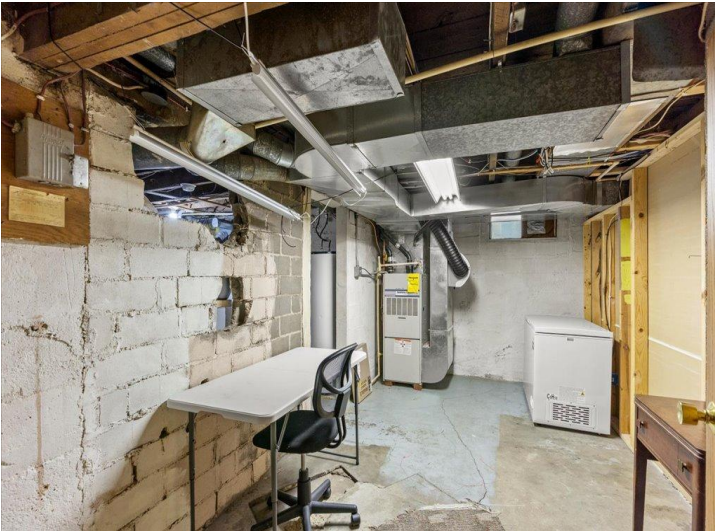
\$189,900
MLS 7069921 Residential
708 Wisconsin Avenue
Staples MN 56479



website: www.AffinityRealEstate.com | email: info@affinityrealestate.com | office: 218-237-3333 | fax:218-237-3377

Affinity
REAL ESTATE INC

\$189,900
MLS 7069921 Residential
708 Wisconsin Avenue
Staples MN 56479



website: www.AffinityRealEstate.com | email: info@affinityrealestate.com | office: 218-237-3333 | fax: 218-237-3377

Affinity
REAL ESTATE INC

\$189,900
MLS 7069921 Residential
708 Wisconsin Avenue
Staples MN 56479



website: www.AffinityRealEstate.com | email: info@affinityrealestate.com | office: 218-237-3333 | fax: 218-237-3377



\$189,900
MLS 7069921 Residential
708 Wisconsin Avenue
Staples MN 56479



website: www.AffinityRealEstate.com | email: info@affinityrealestate.com | office: 218-237-3333 | fax:218-237-3377



\$189,900
MLS 7069921 Residential
708 Wisconsin Avenue
Staples MN 56479