



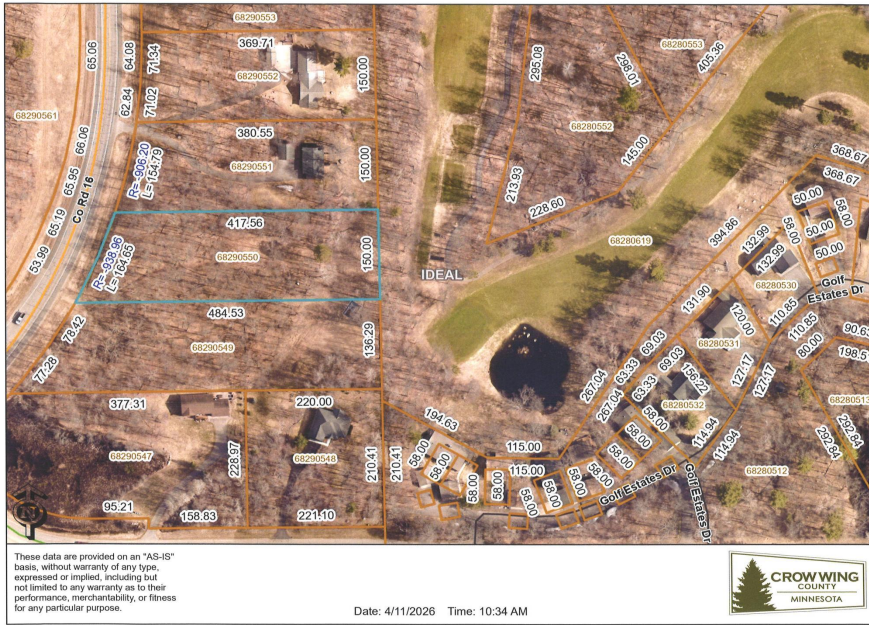
MLS 7070010 Land

\$99,900

1.57 Acres
Other

TBD County Road 16
Pequot Lakes MN 56472

Status: Active



Description:

Excellent opportunity to build on this 1.57 acre fully wooded lot on the Whitefish Golf Club with golf course views overlooking the 13th Green and 14th tee box. Very desirable location with close proximity to all the lakes area amenities. There is already a fully installed mound septic system for a 3 bedroom dwelling and a partially cleared building site with marked corner survey stakes with pink ribbons, plus easy access off of County Rd 16. Bring your builder and start making plans for your future!

Additional Details:

| | |
|------------------------|-----------------|
| Lot Acres | 1.57 |
| Lot Dimensions | 150x484x164x417 |
| School District | 186 |
| Taxes | \$390 |
| Taxes with Assessments | \$390 |
| Tax Year | 2026 |

Additional Features:

Driving Directions:

From Pequot Lakes go North on Hwy 371 to Right on County Rd 16 (at A-Pine stoplights), follow approx. 5.1 miles to sign on your right and before the Whitefish Golf Club.



Listed By:
Kurilla Real Estate LTD

Affinity Real Estate Inc. participates in the Regional Multiple Listing Service of Minnesota, Inc Broker Reciprocity (sm) program, allowing us to display other broker's listings on our website. All properties are subject to prior sale, change or withdrawal.



Call Affinity Real Estate

218-237-3333

info@affinityrealestate.com



Affinity Real Estate - 600 Park Avenue South - Park Rapids MN 56470



These data are provided on an "AS-IS" basis, without warranty of any type, expressed or implied, including but not limited to any warranty as to their performance, merchantability, or fitness for any particular purpose.

Date: 4/11/2026 Time: 10:34 AM



website: www.AffinityRealEstate.com | email: info@affinityrealestate.com | office: 218-237-3333 | fax: 218-237-3377



\$99,900
 MLS 7070010 Land
 TBD County Road 16
 Pequot Lakes MN 56472



website: www.AffinityRealEstate.com | email: info@affinityrealestate.com | office: 218-237-3333 | fax:218-237-3377



\$99,900
MLS 7070010 Land
TBD County Road 16
Pequot Lakes MN 56472