



MLS 7070207 Residential

\$199,900

1,512 sq ft
2 bedrooms
1 baths

16355 Wildflower Lane
Blackduck MN 56630

Status: Coming Soon

Description:

Experience true Northwoods tranquility on this beautiful 80-acre farmstead, offering a rare blend of open pasture, mature woods, and unmatched peace and quiet. With approximately 40 acres of pasture transitioning into rolling, wooded acreage, this property radiates a sense of calm the moment you step onto the land. It's the kind of place where you can breathe deeper, slow down, and feel the world fall away.

The home itself needs a handy touch, but the fundamentals are solid—metal roof and metal siding, an updated well, and a septic system that appears to have been improved at some point. Most of the outbuildings have electricity, adding tremendous value and flexibility for storage, livestock, hobbies, or equipment.

A spacious 3-stall detached garage provides excellent room for ATVs, snowmobiles, tractors, or even a boat or two. The land is ideal for horses, an organic hobby farm, hunting, or simply enjoying the outdoors in every season.

The property borders thousands of acres of state land, creating a true sportsman's paradise with endless room to roam. You're also just a short drive from Upper Red Lake, known for world-class fishing.

Conveniently located one mile from Highway 1, about 15 minutes to Kelliher or Blackduck, and roughly 36 miles to Bemidji, this peaceful retreat is absolutely worth the drive. And with fiber-optic high-speed internet, you can work, stream, or stay connected without compromise.

If you've been searching for space, serenity, and a property with unlimited potential, this farmstead delivers it all. Additional 80 acres available for 175K.

Additional Details:

Year Built	1952
Lot Acres	80
Lot Dimensions	1327x2564
Garage Stalls	3
School District	32
Taxes	\$2,072
Taxes with Assessments	\$2,072
Tax Year	2026

Additional Features:

	In, Unfinished Listed By: Headwaters Realty Services LLC Fuel: Propane Garage: 3 Heat: Forced Air, Radiant Sewer: Private Sewer Water: Well Air Conditioning:
--	--

Driving Real Estate Inc. participates in the Regional Multiple Listing Service of Minnesota, Inc. Broker Reciprocity (sm) program, allowing us to display other broker's listings on our website. All properties are subject to prior sale, change or withdrawal.



Call Affinity Real Estate

218-237-3333

info@affinityrealestate.com



Affinity Real Estate - 600 Park Avenue South - Park Rapids MN 56470



website: www.AffinityRealEstate.com | email: info@affinityrealestate.com | office: 218-237-3333 | fax:218-237-3377

Affinity
REAL ESTATE INC

\$199,900
MLS 7070207 Residential
16355 Wildflower Lane
Blackduck MN 56630



website: www.AffinityRealEstate.com | email: info@affinityrealestate.com | office: 218-237-3333 | fax:218-237-3377



\$199,900
MLS 7070207 Residential
16355 Wildflower Lane
Blackduck MN 56630



website: www.AffinityRealEstate.com | email: info@affinityrealestate.com | office: 218-237-3333 | fax:218-237-3377



\$199,900
MLS 7070207 Residential
16355 Wildflower Lane
Blackduck MN 56630



website: www.AffinityRealEstate.com | email: info@affinityrealestate.com | office: 218-237-3333 | fax: 218-237-3377

Affinity
REAL ESTATE INC

\$199,900
MLS 7070207 Residential
16355 Wildflower Lane
Blackduck MN 56630



website: www.AffinityRealEstate.com | email: info@affinityrealestate.com | office: 218-237-3333 | fax:218-237-3377

Affinity
REAL ESTATE INC

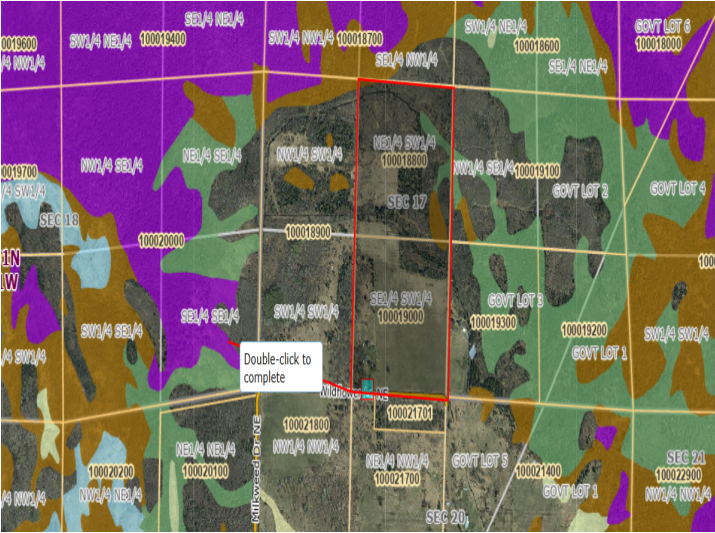
\$199,900
MLS 7070207 Residential
16355 Wildflower Lane
Blackduck MN 56630



website: www.AffinityRealEstate.com | email: info@affinityrealestate.com | office: 218-237-3333 | fax:218-237-3377



\$199,900
MLS 7070207 Residential
16355 Wildflower Lane
Blackduck MN 56630



website: www.AffinityRealEstate.com | email: info@affinityrealestate.com | office: 218-237-3333 | fax:218-237-3377



\$199,900
 MLS 7070207 Residential
 16355 Wildflower Lane
 Blackduck MN 56630