



MLS 7070337 Residential

\$309,900

1,376 sq ft
3 bedrooms
2 baths

2332 Webb Forest Court
Hackensack MN 56452

Status: Active

Description:

Nestled on 2.4 beautifully wooded acres, this one-level home is walking distance to the Webb Lake public access and swimming beach. Featuring 3 bedrooms and 2 bathrooms, primary bedroom includes walk-in closet and private bath, the home boasts an open-floor plan ideal for everyday living and entertaining. The spacious layout is complemented by an attached garage and a separate heated shop—perfect for hobbies, storage, or workspace needs. Step outside to enjoy the serene setting from the back patio, complete with a vaulted pergola and screening, creating a relaxing outdoor retreat. The home also features maintenance-free vinyl log siding and a paved driveway for added convenience and curb appeal. Enjoy peace of mind with recent 2026 upgrades including a new microwave, patio slider, front entry door and storm door. A rare opportunity to enjoy peaceful living close to the lake. Schedule your showing today!

Additional Details:

Year Built	2005
Lot Acres	2.4
Lot Dimensions	188x565x260x448
Garage Stalls	2
School District	113
Taxes	\$1,144
Taxes with Assessments	\$1,230
Tax Year	2026

Additional Features:

Basement: None **Fuel:** Electric, Propane **Garage:** 2 **Heat:** Forced Air **Sewer:** Mound Septic **Water:** 4-Inch Submersible **Air Conditioning:** Central Air

Driving Directions:

From Hackensack go East on County 5 to Right on 24th Ave NW to Left on Webb Forest Court to home on left - 2332 Webb Forest Court



Listed By:
Edina Realty, Inc.

Affinity Real Estate Inc. participates in the Regional Multiple Listing Service of Minnesota, Inc Broker Reciprocity (sm) program, allowing us to display other broker's listings on our website. All properties are subject to prior sale, change or withdrawal.



Call Affinity Real Estate

218-237-3333

info@affinityrealestate.com



Affinity Real Estate - 600 Park Avenue South - Park Rapids MN 56470



website: www.AffinityRealEstate.com | email: info@affinityrealestate.com | office: 218-237-3333 | fax:218-237-3377



\$309,900
MLS 7070337 Residential
2332 Webb Forest Court
Hackensack MN 56452



website: www.AffinityRealEstate.com | email: info@affinityrealestate.com | office: 218-237-3333 | fax: 218-237-3377

Affinity
REAL ESTATE INC

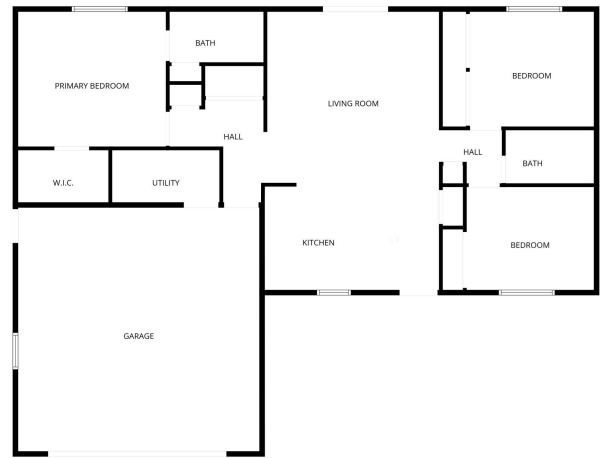
\$309,900
MLS 7070337 Residential
2332 Webb Forest Court
Hackensack MN 56452



website: www.AffinityRealEstate.com | email: info@affinityrealestate.com | office: 218-237-3333 | fax:218-237-3377

Affinity
REAL ESTATE INC

\$309,900
MLS 7070337 Residential
2332 Webb Forest Court
Hackensack MN 56452



FLOOR PLAN CREATED BY CUBICASA APP. MEASUREMENTS DEEMED HIGHLY RELIABLE BUT NOT GUARANTEED.



website: www.AffinityRealEstate.com | email: info@affinityrealestate.com | office: 218-237-3333 | fax:218-237-3377



\$309,900
MLS 7070337 Residential
2332 Webb Forest Court
Hackensack MN 56452



website: www.AffinityRealEstate.com | email: info@affinityrealestate.com | office: 218-237-3333 | fax:218-237-3377



\$309,900
MLS 7070337 Residential
2332 Webb Forest Court
Hackensack MN 56452



website: www.AffinityRealEstate.com | email: info@affinityrealestate.com | office: 218-237-3333 | fax:218-237-3377



\$309,900
MLS 7070337 Residential
2332 Webb Forest Court
Hackensack MN 56452



website: www.AffinityRealEstate.com | email: info@affinityrealestate.com | office: 218-237-3333 | fax:218-237-3377



\$309,900
MLS 7070337 Residential
2332 Webb Forest Court
Hackensack MN 56452