



MLS 7070372 Lake Land

\$69,900

Description:

In addition to the 2.34 acre lot, this property includes a 2/43 interest in a deeded access lot to Ripple Lake, complete with the opportunity for endless recreational enjoyment. Ideal for those seeking a peaceful escape with convenient access to boating, fishing, and lakeside recreation. Don't miss this rare chance to create/build your perfect home or cabin in coveted lake country!

Additional Details:

Lot Acres	2.34
Lot Dimensions	340x300
School District	8001
Taxes	\$120
Taxes with Assessments	\$120
Tax Year	2026

Additional Features:

Driving Directions:

From downtown Aitkin go S on Minnesota Ave then left on Hwy 47 follow 1.5 miles, then turn right on CR 12, follow approx. 3 miles. then right on CR 39 for about 4 miles, then turn left onto 305th St. The land is located at the corner of 305th St. & 389th Ave.



Listed By:
RE/MAX Results - Nisswa

Affinity Real Estate Inc. participates in the Regional Multiple Listing Service of Minnesota, Inc Broker Reciprocity (sm) program, allowing us to display other broker's listings on our website. All properties are subject to prior sale, change or withdrawal.



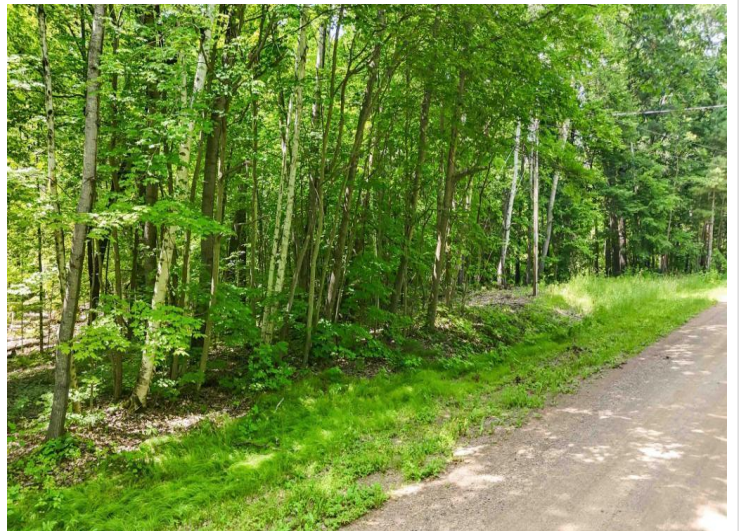
Call Affinity Real Estate

218-237-3333

info@affinityrealestate.com



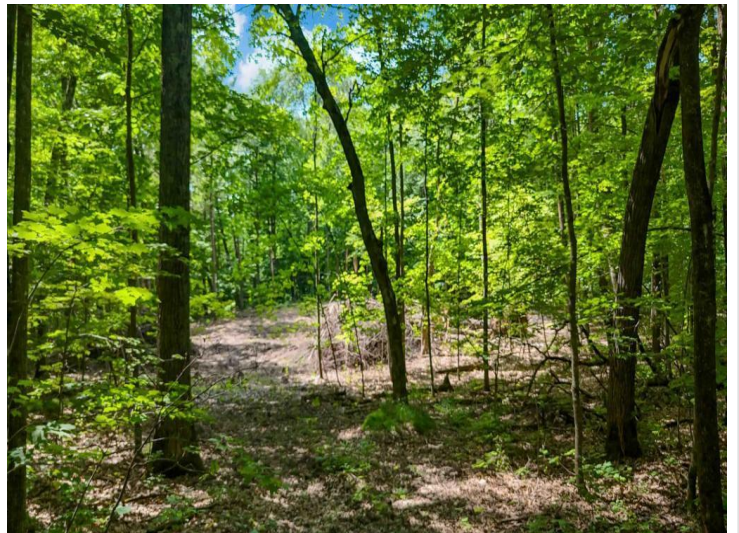
Affinity Real Estate - 600 Park Avenue South - Park Rapids MN 56470



website: www.AffinityRealEstate.com | email: info@affinityrealestate.com | office: 218-237-3333 | fax:218-237-3377



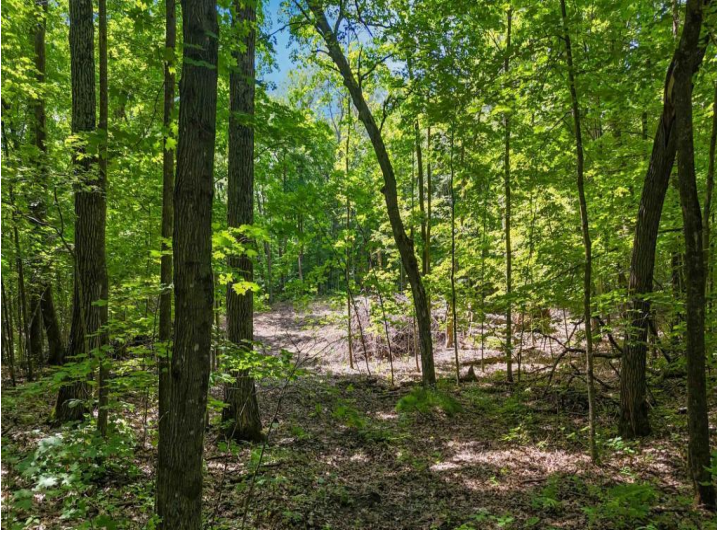
\$69,900
MLS 7070372 Lake Land
Lots B & C 389th Ave.
Aitkin MN 56431



website: www.AffinityRealEstate.com | email: info@affinityrealestate.com | office: 218-237-3333 | fax:218-237-3377



\$69,900
MLS 7070372 Lake Land
Lots B & C 389th Ave.
Aitkin MN 56431



website: www.AffinityRealEstate.com | email: info@affinityrealestate.com | office: 218-237-3333 | fax:218-237-3377



\$69,900
MLS 7070372 Lake Land
Lots B & C 389th Ave.
Aitkin MN 56431