



MLS 7070458 Lake Land

\$750,000

Description:

2500+feet of lakeshore on Lilly Lake. The Dead river flows into the lake from the north and the flows west to Dead Lake. Big crappies and bluegills have been caught in the lake. The land is a deer hunters paradise. If you are looking for a parcel of land that offers wildlife and nature, this is it.

Additional Details:

Lot Acres	101.82
Lot Dimensions	2520x1518x885x615x2550x1125x1305x5
	40
School District	549
Taxes	\$2,724
Taxes with Assessments	\$1,628
Tax Year	2026

Additional Features:

Driving Directions:

Main Street S. from Dent to 395th St to 385th St, East to property about 3/4 of a mile.



Listed By:
Coldwell Banker Realty

Affinity Real Estate Inc. participates in the Regional Multiple Listing Service of Minnesota, Inc Broker Reciprocity (sm) program, allowing us to display other broker's listings on our website. All properties are subject to prior sale, change or withdrawal.



Call Affinity Real Estate

218-237-3333

info@affinityrealestate.com



Affinity Real Estate - 600 Park Avenue South - Park Rapids MN 56470



website: www.AffinityRealEstate.com | email: info@affinityrealestate.com | office: 218-237-3333 | fax:218-237-3377



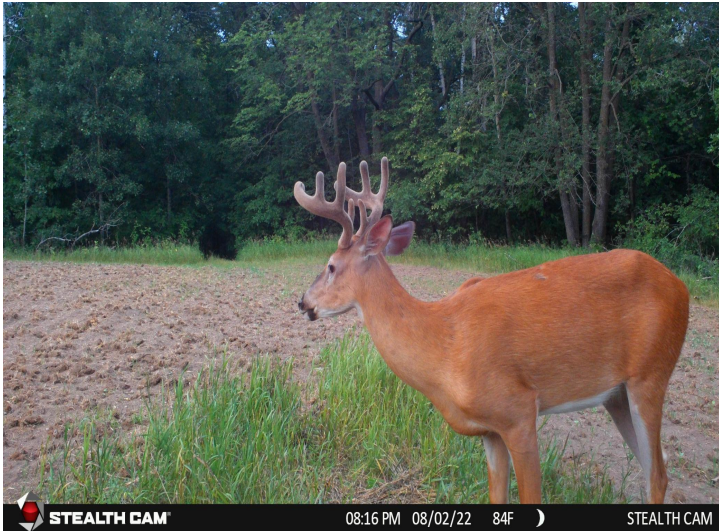
\$750,000
MLS 7070458 Lake Land
38XXX 385th Street
Richville MN 56576



website: www.AffinityRealEstate.com | email: info@affinityrealestate.com | office: 218-237-3333 | fax:218-237-3377



\$750,000
MLS 7070458 Lake Land
38XXX 385th Street
Richville MN 56576



website: www.AffinityRealEstate.com | email: info@affinityrealestate.com | office: 218-237-3333 | fax:218-237-3377



\$750,000
MLS 7070458 Lake Land
38XXX 385th Street
Richville MN 56576



website: www.AffinityRealEstate.com | email: info@affinityrealestate.com | office: 218-237-3333 | fax:218-237-3377



\$750,000
MLS 7070458 Lake Land
38XXX 385th Street
Richville MN 56576



website: www.AffinityRealEstate.com | email: info@affinityrealestate.com | office: 218-237-3333 | fax:218-237-3377



\$750,000
MLS 7070458 Lake Land
38XXX 385th Street
Richville MN 56576