



MLS 7070549 Residential

**\$399,900**

1,074 sq ft  
2 bedrooms  
2 baths

4558 Villa View Drive  
Nisswa MN 56468

Status: Pending

**Description:**

Pending Before Print

Welcome to your fully furnished Lake Edna retreat at 4558 Villa View Dr! This charming cabin offers the perfect blend of cozy lake life and modern upgrades.

Extensively updated over the past several years, this property features major exterior improvements including new shingles, siding, gutters, windows, and outdoor lighting (2022), along with a lakeside awning for added comfort and shade. Inside, you'll appreciate the added mini-split system for efficient heating and cooling (2021), electronic blackout shades (2023), and a new front door with keypad entry for convenience and security.

The cabin comfortably sleeps a crowd with multiple sleeping upgrades including a queen bed, twin-over-queen bunk with trundle, and a Murphy bed—all new in 2020. Additional improvements include a reverse osmosis water system, updated storm door, and a freshly stained deck (2025).

Outside, the property continues to shine with a newly updated garage (roof and siding), improved landscaping with dead tree removal, and new perennial plantings. The septic system has also been brought up to code, offering peace of mind for years to come.

Whether you're looking for a personal getaway or a turnkey investment opportunity, this move-in-ready Lake Edna cabin checks all the boxes.

**Additional Details:**

Year Built	1976
Lot Acres	0.08
Lot Dimensions	34x85x33x107
School District	181
Taxes	\$2,738
Taxes with Assessments	\$2,738

Listed By: 2025  
Woods to Water Real Estate

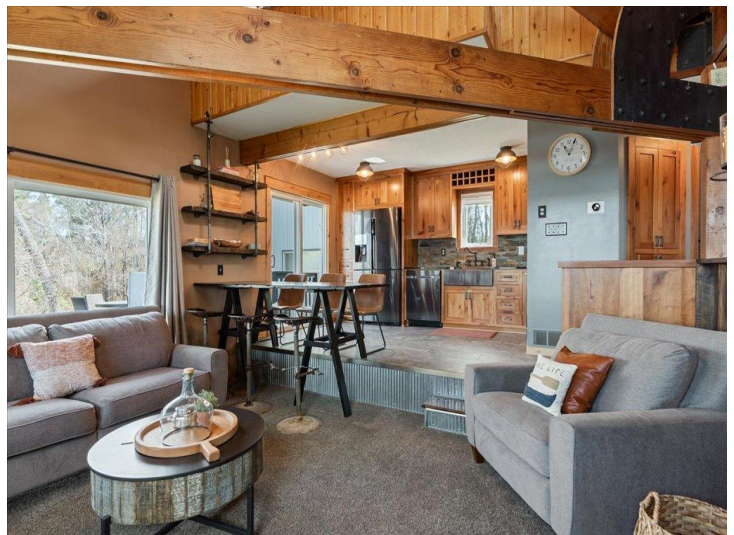
**Additional Features:**  
Affinity Real Estate Inc. participates in the Regional Multiple Listing Service of Minnesota, Inc Broker Reciprocity (RM) program, allowing us to display other broker's listings on our website. All properties are subject to prior sale, change or withdrawal.

**Driving Directions:**  
North on MN 371N toward Novotny Rd, right onto Roy Lake Connector, left onto Lower Cullen Rd, turn left at the first cross street onto MN 371, right onto Villa View Dr.



Call Affinity Real Estate  
**218-237-3333**  
[info@affinityrealestate.com](mailto:info@affinityrealestate.com)

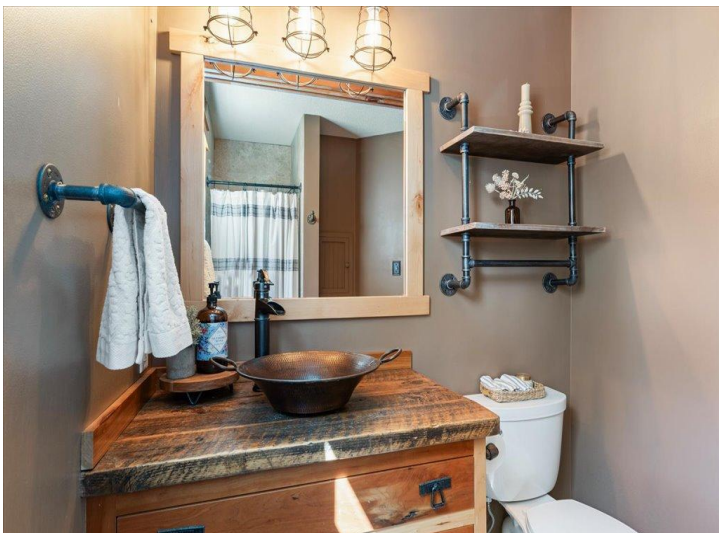




website: [www.AffinityRealEstate.com](http://www.AffinityRealEstate.com) | email: [info@affinityrealestate.com](mailto:info@affinityrealestate.com) | office: 218-237-3333 | fax: 218-237-3377

**Affinity**  
REAL ESTATE INC

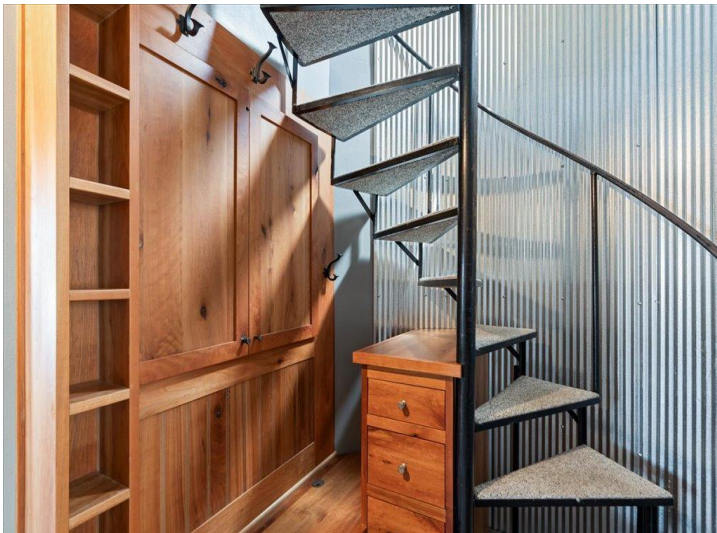
**\$399,900**  
MLS 7070549 Residential  
4558 Villa View Drive  
Nisswa MN 56468



website: [www.AffinityRealEstate.com](http://www.AffinityRealEstate.com) | email: [info@affinityrealestate.com](mailto:info@affinityrealestate.com) | office: 218-237-3333 | fax:218-237-3377



**\$399,900**  
MLS 7070549 Residential  
4558 Villa View Drive  
Nisswa MN 56468



website: [www.AffinityRealEstate.com](http://www.AffinityRealEstate.com) | email: [info@affinityrealestate.com](mailto:info@affinityrealestate.com) | office: 218-237-3333 | fax:218-237-3377

**Affinity**  
REAL ESTATE INC

**\$399,900**  
MLS 7070549 Residential  
4558 Villa View Drive  
Nisswa MN 56468



website: [www.AffinityRealEstate.com](http://www.AffinityRealEstate.com) | email: [info@affinityrealestate.com](mailto:info@affinityrealestate.com) | office: 218-237-3333 | fax:218-237-3377



**\$399,900**  
MLS 7070549 Residential  
4558 Villa View Drive  
Nisswa MN 56468



website: [www.AffinityRealEstate.com](http://www.AffinityRealEstate.com) | email: [info@affinityrealestate.com](mailto:info@affinityrealestate.com) | office: 218-237-3333 | fax:218-237-3377

**Affinity**  
REAL ESTATE INC

**\$399,900**  
MLS 7070549 Residential  
4558 Villa View Drive  
Nisswa MN 56468



website: [www.AffinityRealEstate.com](http://www.AffinityRealEstate.com) | email: [info@affinityrealestate.com](mailto:info@affinityrealestate.com) | office: 218-237-3333 | fax:218-237-3377



**\$399,900**  
MLS 7070549 Residential  
4558 Villa View Drive  
Nisswa MN 56468