



MLS 7070610 Residential

\$49,900

1,344 sq ft
2 bedrooms
0 baths

422 2nd Street
Wadena MN 56482

Status: Hold

Description:

Don't miss this affordable fixer-upper located in the heart of Wadena. This home has great potential and has a new roof. Located on a nice corner lot.

Additional Details:

Year Built	1900
Lot Acres	0.16
Lot Dimensions	50x140
School District	2155
Taxes	\$506
Taxes with Assessments	\$506
Tax Year	2025

Additional Features:

Basement: Block, Partial, Unfinished **Fuel:** Oil **Heat:** Hot Water **Sewer:** City Sewer/Connected **Water:** City Water/Connected **Air Conditioning:** None

Driving Directions:

Emerson and 2nd St SE; 422 2nd St Se Street SE, Wadena, MN



Listed By:
eXp Realty

Affinity Real Estate Inc. participates in the Regional Multiple Listing Service of Minnesota, Inc Broker Reciprocity (sm) program, allowing us to display other broker's listings on our website. All properties are subject to prior sale, change or withdrawal.



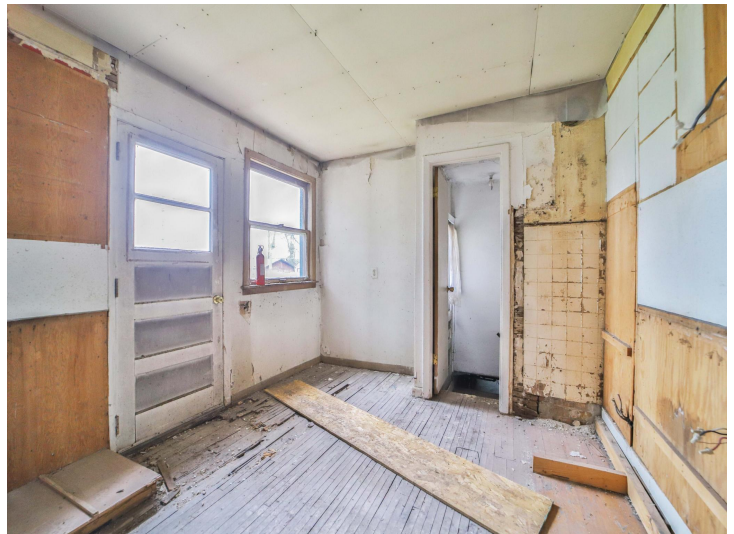
Call Affinity Real Estate

218-237-3333

info@affinityrealestate.com



Affinity Real Estate - 600 Park Avenue South - Park Rapids MN 56470



website: www.AffinityRealEstate.com | email: info@affinityrealestate.com | office: 218-237-3333 | fax: 218-237-3377

Affinity
REAL ESTATE INC

\$49,900
MLS 7070610 Residential
422 2nd Street
Wadena MN 56482



website: www.AffinityRealEstate.com | email: info@affinityrealestate.com | office: 218-237-3333 | fax: 218-237-3377

Affinity
REAL ESTATE INC

\$49,900
MLS 7070610 Residential
422 2nd Street
Wadena MN 56482



website: www.AffinityRealEstate.com | email: info@affinityrealestate.com | office: 218-237-3333 | fax:218-237-3377

Affinity
REAL ESTATE INC

\$49,900
MLS 7070610 Residential
422 2nd Street
Wadena MN 56482



website: www.AffinityRealEstate.com | email: info@affinityrealestate.com | office: 218-237-3333 | fax:218-237-3377

Affinity
REAL ESTATE INC

\$49,900
MLS 7070610 Residential
422 2nd Street
Wadena MN 56482



website: www.AffinityRealEstate.com | email: info@affinityrealestate.com | office: 218-237-3333 | fax: 218-237-3377



\$49,900
MLS 7070610 Residential
422 2nd Street
Wadena MN 56482