



MLS 7070625 Land

\$50,000

2.31 Acres
Raw Land

TBD 302 Avenue
Detroit Lakes MN 56501

Status: Active

Description:

Discover the perfect blend of country living and community on this beautiful 2.31-acre property just outside of town. Enjoy peaceful surroundings with the convenience of nearby neighbors and minimal covenants, giving you the freedom to bring your own builder and create the home you've always envisioned. Plenty of space for your dream home, outbuilding, garden, and more - start planning your new beginning today! Still looking for more? There is an additional 2.96 acres available as well, check out MLS #7070656

Additional Details:

Lot Acres	2.31
Lot Dimensions	287x303x370x308
School District	22
Taxes	\$238
Taxes with Assessments	\$238
Tax Year	2025

Additional Features:

Driving Directions:

From Detroit Lakes take Hwy 34 E about 3 miles, turn left onto 302 Ave, property will be on the right about 1/4 of a mile off highway.



Listed By:
Jack Chivers Realty

Affinity Real Estate Inc. participates in the Regional Multiple Listing Service of Minnesota, Inc Broker Reciprocity (sm) program, allowing us to display other broker's listings on our website. All properties are subject to prior sale, change or withdrawal.



Call Affinity Real Estate

218-237-3333

info@affinityrealestate.com



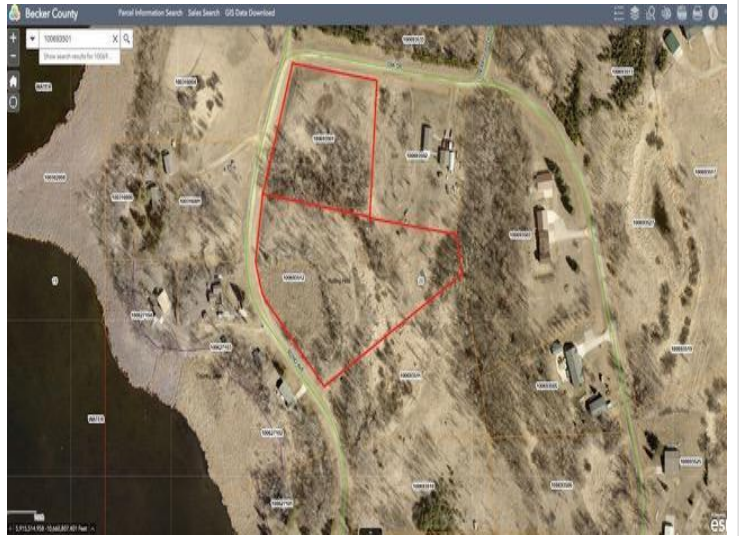
Affinity Real Estate - 600 Park Avenue South - Park Rapids MN 56470



website: www.AffinityRealEstate.com | email: info@affinityrealestate.com | office: 218-237-3333 | fax: 218-237-3377

Affinity
REAL ESTATE INC

\$50,000
MLS 7070625 Land
TBD 302 Avenue
Detroit Lakes MN 56501



website: www.AffinityRealEstate.com | email: info@affinityrealestate.com | office: 218-237-3333 | fax:218-237-3377



\$50,000
MLS 7070625 Land
TBD 302 Avenue
Detroit Lakes MN 56501