



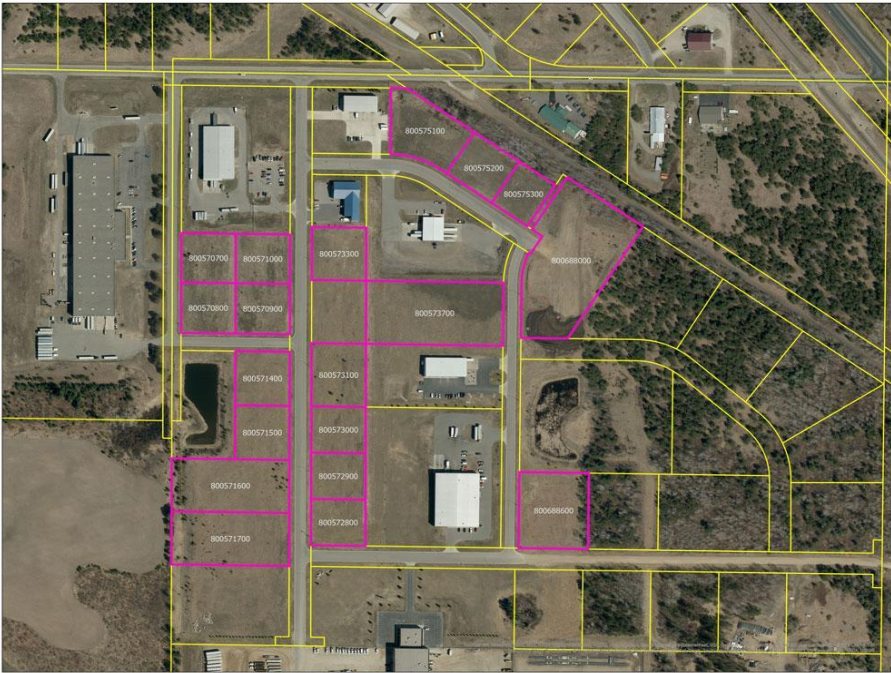
MLS 7070754 Land

\$29,000

0.7 Acres
Finished Lot(s)

TBD Cram Avenue SE
Bemidji MN 56601

Status: Active



Description:

Affordably priced building lots in Bemidji's Industrial Park shovel ready for your ideas! Multiple lots available from .67-3.7 acres and multiple lots are adjacent to each other if you need additional space. The owner of these lots is the Bemidji Development Corporation. The lots and pricing can be seen at bemidjidevelopment.com.

There are certain restrictions that do apply. See the website. The lots must be built on within one year. These lots cannot be used residentially.

City water, sewer, natural gas, and communication utilities are available in the street. No special assessments.

Additional Details:

Lot Acres	0.7
School District	31
Taxes	(unreported)
Taxes with Assessments	(unreported)
Tax Year	2026

Additional Features:

Driving Directions:

In Bemidji: south on Washington Avenue to Carr Lake Road. East on Carr Lake Road to Cram Avenue.



Listed By:
Century 21 Dickinson

Affinity Real Estate Inc. participates in the Regional Multiple Listing Service of Minnesota, Inc Broker Reciprocity (sm) program, allowing us to display other broker's listings on our website. All properties are subject to prior sale, change or withdrawal.



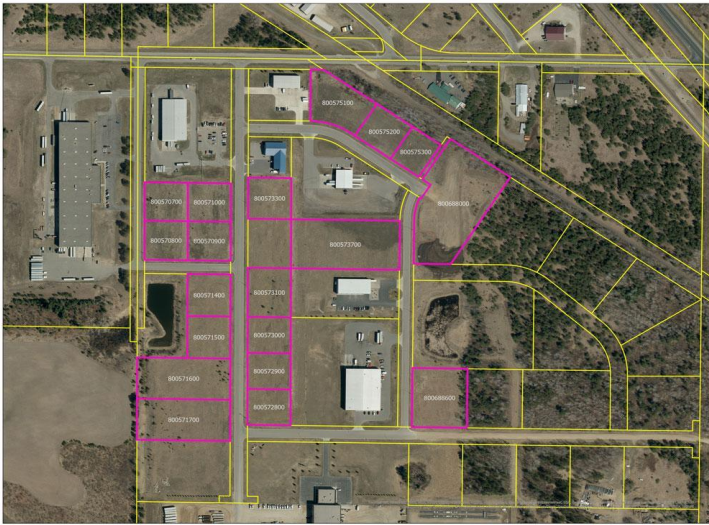
Call Affinity Real Estate

218-237-3333

info@affinityrealestate.com



Affinity Real Estate - 600 Park Avenue South - Park Rapids MN 56470



website: www.AffinityRealEstate.com | email: info@affinityrealestate.com | office: 218-237-3333 | fax: 218-237-3377



\$29,000
MLS 7070754 Land
TBD Cram Avenue SE
Bemidji MN 56601



website: www.AffinityRealEstate.com | email: info@affinityrealestate.com | office: 218-237-3333 | fax:218-237-3377



\$29,000
MLS 7070754 Land
TBD Cram Avenue SE
Bemidji MN 56601