



MLS 7070856 Residential

\$335,000

2,191 sq ft
4 bedrooms
3 baths

3807 Valley View Drive
Bemidji MN 56601

Status: Active

Description:

You're going to love this welcoming home, perfectly situated on a quiet road just minutes from downtown Bemidji. Featuring 4 bedrooms and 2.5 bathrooms, this home offers both comfort and space, including an extra-large primary bathtub perfect for relaxing after a long day. The cozy lower-level family room features a large fireplace, creating the perfect gathering space year-round. A centrally located oversized laundry room adds convenience to everyday living, while the vaulted ceilings throughout the main living area make the home feel bright, open, and connected. Step outside onto the impressive 20' x 30' back deck, large enough for patio furniture, outdoor dining, and a full grilling station. An optional awning provides extra protection from the elements when desired, making the space enjoyable in a variety of weather conditions. Set on just over an acre, the yard offers endless possibilities — whether you enjoy gardening, entertaining, letting pets roam, or simply having room to run and play.

Additional Details:

Year Built	2004
Lot Acres	1.008
Lot Dimensions	157x250x157x250
Garage Stalls	2
School District	31
Taxes	\$3,396
Taxes with Assessments	\$3,396
Tax Year	2025

Additional Features:

Basement: Crawl Space, Drainage System, Egress Window(s), Finished, Storage Space **Fuel:** Natural Gas **Garage:** 2 **Heat:** Forced Air, Fireplace(s) **Sewer:** Septic System Compliant - Yes, Tank with Drainage Field **Water:** Well **Air Conditioning:** Central Air, Geothermal

Driving Directions:

Lake ave to power dam. Take Mill St to Valley View



Listed By:
eXp Realty

Affinity Real Estate Inc. participates in the Regional Multiple Listing Service of Minnesota, Inc Broker Reciprocity (sm) program, allowing us to display other broker's listings on our website. All properties are subject to prior sale, change or withdrawal.



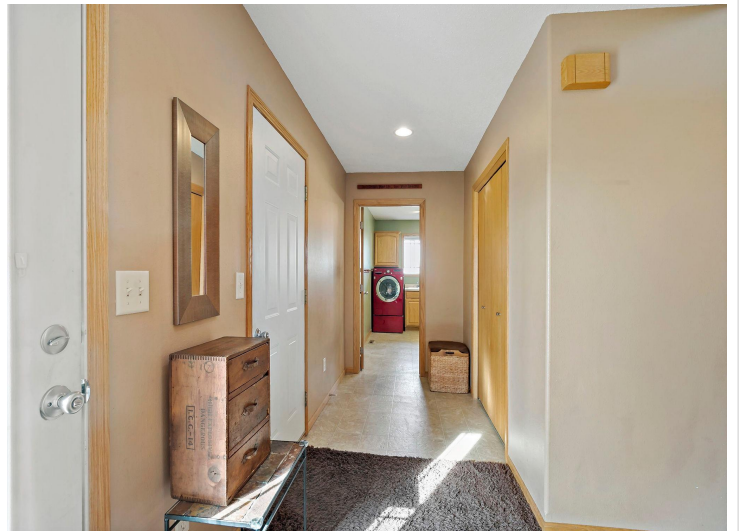
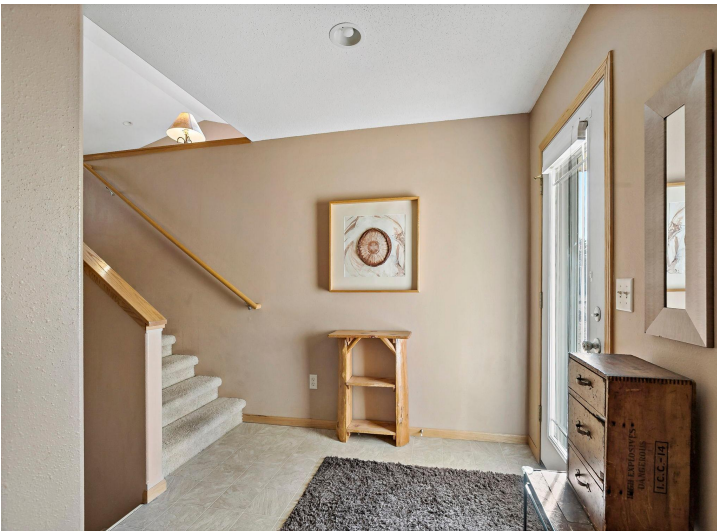
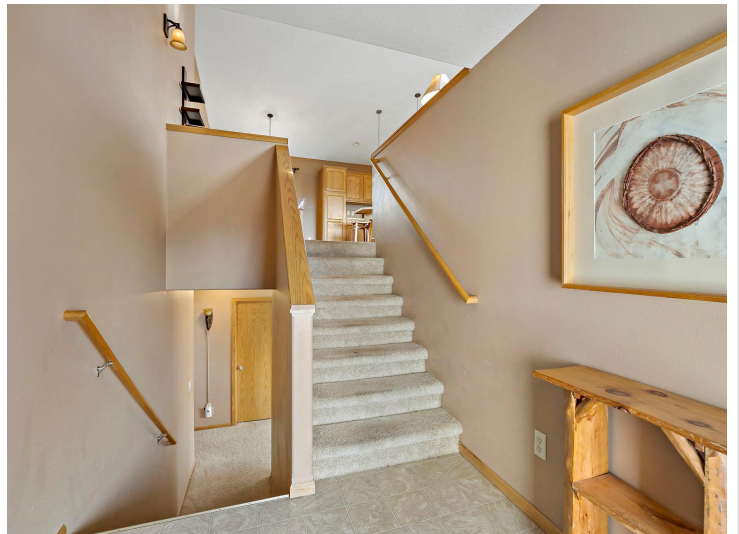
Call Affinity Real Estate

218-237-3333

info@affinityrealestate.com



Affinity Real Estate - 600 Park Avenue South - Park Rapids MN 56470



website: www.AffinityRealEstate.com | email: info@affinityrealestate.com | office: 218-237-3333 | fax: 218-237-3377

Affinity
REAL ESTATE INC

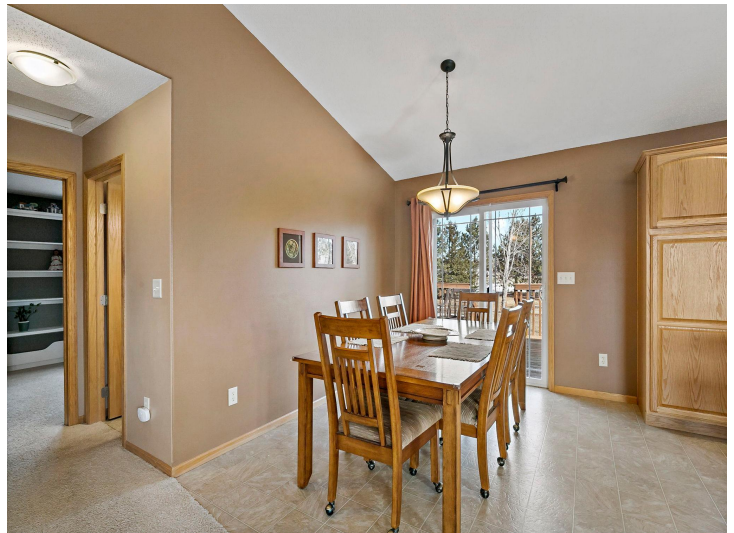
\$335,000
MLS 7070856 Residential
3807 Valley View Drive
Bemidji MN 56601



website: www.AffinityRealEstate.com | email: info@affinityrealestate.com | office: 218-237-3333 | fax:218-237-3377



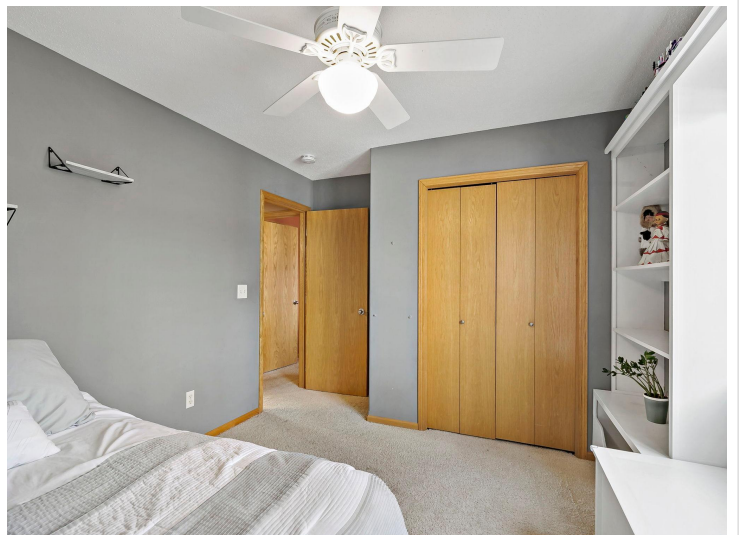
\$335,000
MLS 7070856 Residential
3807 Valley View Drive
Bemidji MN 56601



website: www.AffinityRealEstate.com | email: info@affinityrealestate.com | office: 218-237-3333 | fax: 218-237-3377

Affinity
REAL ESTATE INC

\$335,000
MLS 7070856 Residential
3807 Valley View Drive
Bemidji MN 56601



website: www.AffinityRealEstate.com | email: info@affinityrealestate.com | office: 218-237-3333 | fax: 218-237-3377

Affinity
REAL ESTATE INC

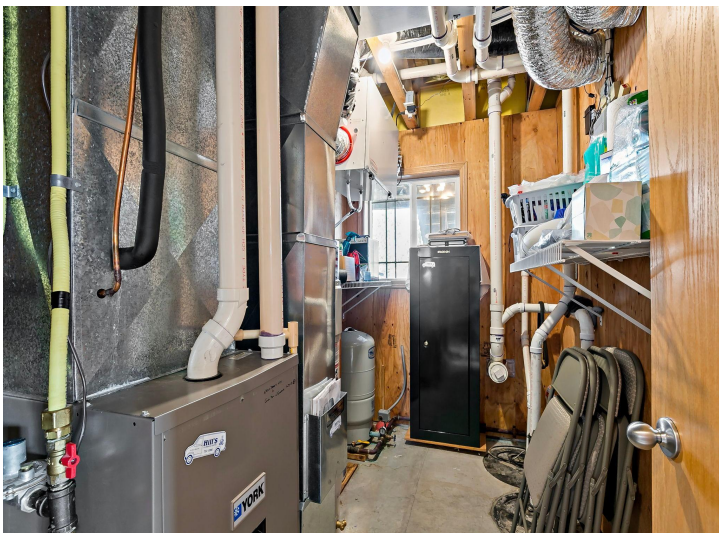
\$335,000
MLS 7070856 Residential
3807 Valley View Drive
Bemidji MN 56601



website: www.AffinityRealEstate.com | email: info@affinityrealestate.com | office: 218-237-3333 | fax:218-237-3377

Affinity
REAL ESTATE INC

\$335,000
MLS 7070856 Residential
3807 Valley View Drive
Bemidji MN 56601



website: www.AffinityRealEstate.com | email: info@affinityrealestate.com | office: 218-237-3333 | fax:218-237-3377

Affinity
REAL ESTATE INC

\$335,000
MLS 7070856 Residential
3807 Valley View Drive
Bemidji MN 56601



website: www.AffinityRealEstate.com | email: info@affinityrealestate.com | office: 218-237-3333 | fax:218-237-3377

Affinity
REAL ESTATE INC

\$335,000
MLS 7070856 Residential
3807 Valley View Drive
Bemidji MN 56601



website: www.AffinityRealEstate.com | email: info@affinityrealestate.com | office: 218-237-3333 | fax:218-237-3377



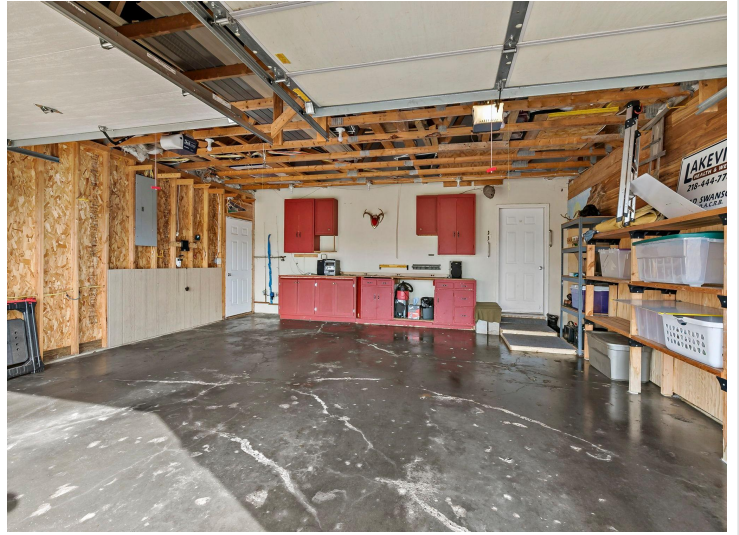
\$335,000
MLS 7070856 Residential
3807 Valley View Drive
Bemidji MN 56601



website: www.AffinityRealEstate.com | email: info@affinityrealestate.com | office: 218-237-3333 | fax:218-237-3377



\$335,000
MLS 7070856 Residential
3807 Valley View Drive
Bemidji MN 56601



website: www.AffinityRealEstate.com | email: info@affinityrealestate.com | office: 218-237-3333 | fax:218-237-3377



\$335,000
MLS 7070856 Residential
3807 Valley View Drive
Bemidji MN 56601