



website: www.AffinityRealEstate.com | email: info@affinityrealestate.com | office: 218-237-3333 | fax:218-237-3377



\$135,000
MLS 7070920 Land
Parcel #3 TBD County 9
Becida MN 56678



website: www.AffinityRealEstate.com | email: info@affinityrealestate.com | office: 218-237-3333 | fax:218-237-3377



\$135,000
MLS 7070920 Land
Parcel #3 TBD County 9
Becida MN 56678



website: www.AffinityRealEstate.com | email: info@affinityrealestate.com | office: 218-237-3333 | fax:218-237-3377



\$135,000
MLS 7070920 Land
Parcel #3 TBD County 9
Becida MN 56678



website: www.AffinityRealEstate.com | email: info@affinityrealestate.com | office: 218-237-3333 | fax:218-237-3377



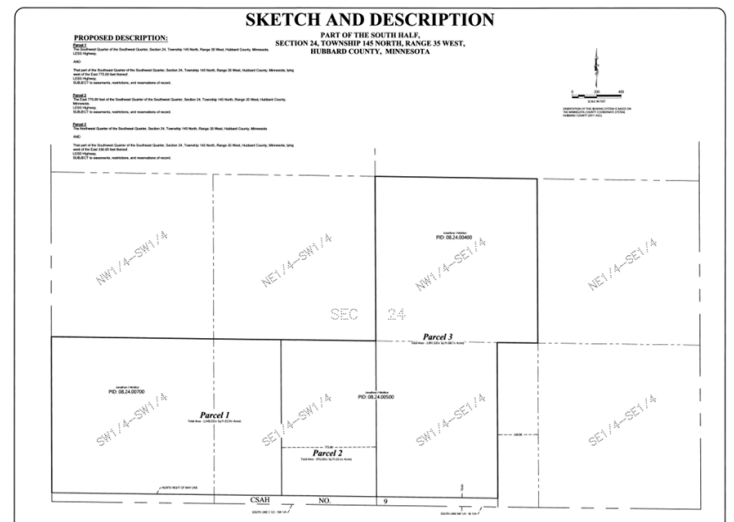
\$135,000
MLS 7070920 Land
Parcel #3 TBD County 9
Becida MN 56678



website: www.AffinityRealEstate.com | email: info@affinityrealestate.com | office: 218-237-3333 | fax:218-237-3377



\$135,000
MLS 7070920 Land
Parcel #3 TBD County 9
Becida MN 56678



website: www.AffinityRealEstate.com | email: info@affinityrealestate.com | office: 218-237-3333 | fax: 218-237-3377



\$135,000
 MLS 7070920 Land
 Parcel #3 TBD County 9
 Becida MN 56678



website: www.AffinityRealEstate.com | email: info@affinityrealestate.com | office: 218-237-3333 | fax:218-237-3377

Affinity
REAL ESTATE INC

\$135,000
MLS 7070920 Land
Parcel #3 TBD County 9
Becida MN 56678



website: www.AffinityRealEstate.com | email: info@affinityrealestate.com | office: 218-237-3333 | fax:218-237-3377



\$135,000
MLS 7070920 Land
Parcel #3 TBD County 9
Becida MN 56678