



MLS 7070971 Residential

\$575,000

1,131 sq ft
2 bedrooms
2 baths

15011 16th Avenue
Bena MN 56626

Status: Coming Soon

Description:

Amazing location with deeded access to the resort harbor on beautiful Lake Winnibigoshish! Your harbor slip offers protection from the big lake waves, making boating easy and enjoyable all season long. Hop on your side-by-side and take a short ride to the sandy beach. This newly constructed one-level two bedroom home was designed for comfortable living with wide hallways for easy accessibility and large windows that fill the home with natural light. The primary suite features a custom tiled shower, while the thoughtfully designed kitchen offers stylish details including a convenient drawer microwave. Patio doors lead to an incredible covered patio overlooking a private tree-lined yard. Whether relaxing in the peaceful setting or enjoying the craftsmanship and accent lighting throughout the outdoor living space, this area is made for entertaining. The finished garage extends the living space and provides the perfect spot for gatherings, hobbies, or extra recreation space. Enjoy unforgettable holidays at the lake, especially the 4th of July, when the fireworks are spectacular.

Additional Details:

Year Built	2023
Lot Acres	1.42
Lot Dimensions	205x336x200x280
Garage Stalls	3
School District	115
Taxes	\$2,600
Taxes with Assessments	\$2,600
Tax Year	2026

Additional Features:

Basement: Other **Fuel:** Propane **Garage:** 3 **Heat:** Boiler, In-Floor Heating **Sewer:** Septic System Compliant - Yes **Water:** 4-Inch Submersible, Drilled, Well **Air Conditioning:** None

Driving Directions:

From Rapids, Hwy 2 W., Rt on Winnie Rd NE. Property on the left.



Listed By:
COLDWELL BANKER NORTHWOODS

Affinity Real Estate Inc. participates in the Regional Multiple Listing Service of Minnesota, Inc Broker Reciprocity (sm) program, allowing us to display other broker's listings on our website. All properties are subject to prior sale, change or withdrawal.



Call Affinity Real Estate

218-237-3333

info@affinityrealestate.com



Affinity Real Estate - 600 Park Avenue South - Park Rapids MN 56470



website: www.AffinityRealEstate.com | email: info@affinityrealestate.com | office: 218-237-3333 | fax: 218-237-3377

Affinity
REAL ESTATE INC

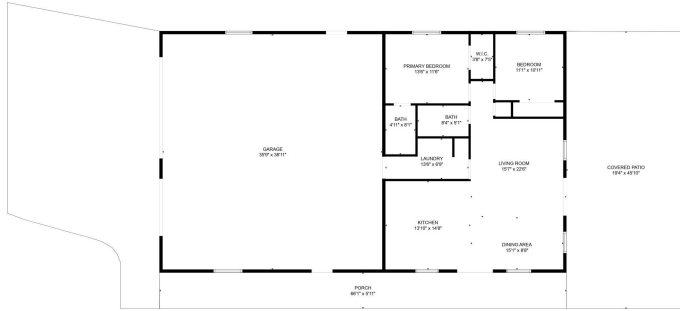
\$575,000
MLS 7070971 Residential
15011 16th Avenue
Bena MN 56626



website: www.AffinityRealEstate.com | email: info@affinityrealestate.com | office: 218-237-3333 | fax:218-237-3377

Affinity
REAL ESTATE INC

\$575,000
MLS 7070971 Residential
15011 16th Avenue
Bena MN 56626



FLOOR PLAN CREATED BY CUBICASA API; MEASUREMENTS DEEMED HIGHLY RELIABLE BUT NOT GUARANTEED.

website: www.AffinityRealEstate.com | email: info@affinityrealestate.com | office: 218-237-3333 | fax:218-237-3377



\$575,000
 MLS 7070971 Residential
 15011 16th Avenue
 Bena MN 56626