



MLS 7070987 Lake Home

**\$699,900**

3,264 sq ft  
4 bedrooms  
3 baths

2523 River Glen Lane  
Pillager MN 56473

Waterfront: Crow Wing River

Status: Active



**Description:**

If you've been searching for privacy, acreage, and true waterfront access, this property delivers a combination that's hard to find. Built in 2022 and set on over 3 private acres along the Crow Wing River, this 4-bedroom, 3-bath home offers 3,264 finished square feet with a layout designed for both everyday comfort and entertaining. The setting is what truly sets it apart—featuring a hard sand bottom shoreline ideal for swimming, along with known excellent fishing and the ability to boat for miles to the Pillager Dam and the Gull River. Or throw an anchor in the water at the sandbar just minutes away! Inside, you'll find a spacious and thoughtfully designed interior highlighted by Patnode's custom cabinetry, a walk-in pantry, and quality finishes throughout. The primary suite offers a private retreat with a full bath, soaker tub, linen storage, and walk-in closet. The finished lower level provides additional living space, perfect for guests or recreation. Additional features include LP siding with stone accents, in-floor heat in the attached garage, a second detached two-stall garage, stamped concrete patios, lawn irrigation, and a beautifully maintained 3-acre parcel that offers both space and privacy. Whether you're looking for a full-time residence or a getaway with true waterfront usability, this property offers a unique opportunity to enjoy the outdoors without compromise.

**Additional Details:**

Year Built	2022
Lot Acres	3.1
Lot Dimensions	Irreg
Garage Stalls	4
School District	116
Taxes	\$4,014
Taxes with Assessments	\$4,080
Tax Year	2025

**Additional Features:**

**Basement:** Finished, Full **Fuel:** Propane **Garage:** 4 **Heat:** Forced Air, In-Floor Heating **Sewer:** Tank with Drainage Field **Water:** Well **Air Conditioning:** Central Air

**Driving Directions:**

From Baxter - West on 210 - Left on 24th Ave SW - Right on 25th Ave SW - Right on the Right

Call Affinity Real Estate



Listed By:  
NextHome Horizons

Affinity Real Estate Inc. participates in the Regional Multiple Listing Service of Minnesota, Inc Broker Reciprocity (sm) program, allowing us to display other broker's listings on our website. All properties are subject to prior sale, change or withdrawal.



**218-237-3333**

[info@affinityrealestate.com](mailto:info@affinityrealestate.com)



Affinity Real Estate - 600 Park Avenue South - Park Rapids MN 56470



website: [www.AffinityRealEstate.com](http://www.AffinityRealEstate.com) | email: [info@affinityrealestate.com](mailto:info@affinityrealestate.com) | office: 218-237-3333 | fax:218-237-3377



**\$699,900**  
MLS 7070987 Lake Home  
2523 River Glen Lane  
Pillager MN 56473



website: [www.AffinityRealEstate.com](http://www.AffinityRealEstate.com) | email: [info@affinityrealestate.com](mailto:info@affinityrealestate.com) | office: 218-237-3333 | fax:218-237-3377



**\$699,900**  
MLS 7070987 Lake Home  
2523 River Glen Lane  
Pillager MN 56473



website: [www.AffinityRealEstate.com](http://www.AffinityRealEstate.com) | email: [info@affinityrealestate.com](mailto:info@affinityrealestate.com) | office: 218-237-3333 | fax: 218-237-3377

**Affinity**  
REAL ESTATE INC

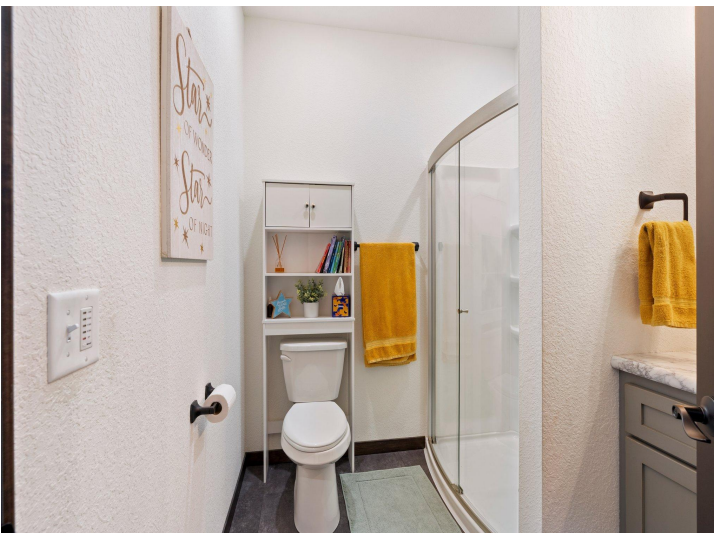
**\$699,900**  
MLS 7070987 Lake Home  
2523 River Glen Lane  
Pillager MN 56473



website: [www.AffinityRealEstate.com](http://www.AffinityRealEstate.com) | email: [info@affinityrealestate.com](mailto:info@affinityrealestate.com) | office: 218-237-3333 | fax:218-237-3377



**\$699,900**  
MLS 7070987 Lake Home  
2523 River Glen Lane  
Pillager MN 56473



website: [www.AffinityRealEstate.com](http://www.AffinityRealEstate.com) | email: [info@affinityrealestate.com](mailto:info@affinityrealestate.com) | office: 218-237-3333 | fax: 218-237-3377

**Affinity**  
REAL ESTATE INC

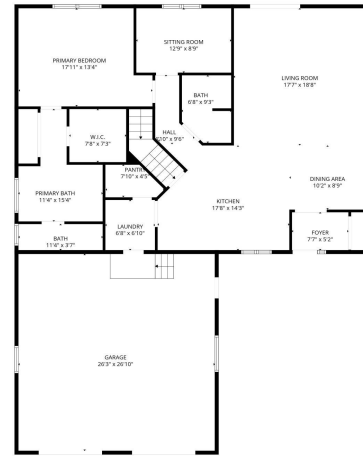
**\$699,900**  
MLS 7070987 Lake Home  
2523 River Glen Lane  
Pillager MN 56473



website: [www.AffinityRealEstate.com](http://www.AffinityRealEstate.com) | email: [info@affinityrealestate.com](mailto:info@affinityrealestate.com) | office: 218-237-3333 | fax:218-237-3377

**Affinity**  
REAL ESTATE INC

**\$699,900**  
MLS 7070987 Lake Home  
2523 River Glen Lane  
Pillager MN 56473



FLOOR PLAN CREATED BY CUBICASA APP. MEASUREMENTS DEEMED HIGHLY RELIABLE BUT NOT GUARANTEED.



website: [www.AffinityRealEstate.com](http://www.AffinityRealEstate.com) | email: [info@affinityrealestate.com](mailto:info@affinityrealestate.com) | office: 218-237-3333 | fax: 218-237-3377



**\$699,900**  
 MLS 7070987 Lake Home  
 2523 River Glen Lane  
 Pillager MN 56473



website: [www.AffinityRealEstate.com](http://www.AffinityRealEstate.com) | email: [info@affinityrealestate.com](mailto:info@affinityrealestate.com) | office: 218-237-3333 | fax:218-237-3377



**\$699,900**  
MLS 7070987 Lake Home  
2523 River Glen Lane  
Pillager MN 56473



website: [www.AffinityRealEstate.com](http://www.AffinityRealEstate.com) | email: [info@affinityrealestate.com](mailto:info@affinityrealestate.com) | office: 218-237-3333 | fax:218-237-3377



**\$699,900**  
MLS 7070987 Lake Home  
2523 River Glen Lane  
Pillager MN 56473