



MLS 7071172 Residential Income

**\$849,900**



**Description:**

Don't miss this just-completed, newly constructed fourplex located in the heart of Pillager. Each unit has two bedrooms, one bath, granite countertops, tiled backsplash, new stainless steel appliances, concrete patio, washer and dryer hookups, a large primary bedroom with double closets, a bath with tiled shower, and a one-car attached heated/insulated garage. Tenant will pay for all utilities. Each unit will rent for \$1,295- a month. This fourplex is in a great location close to Pillager School, Clinic, and storage units. Set up a showing today.

**Additional Details:**

Year Built	2026
Lot Acres	0.98
Lot Dimensions	225x190
Garage Stalls	4
School District	116
Taxes	\$552
Taxes with Assessments	\$552
Tax Year	2026

**Additional Features:**

**Basement:** None **Fuel:** Electric **Garage:** 4 **Heat:** Baseboard **Sewer:** City Sewer - In Street **Water:** City Water/Connected

**Driving Directions:**

Take Hwy 210, turn onto Pillsbury Street North, turn Right on Palomino Ave. W, to 4 plex on Left.



Listed By:  
eXp Realty

Affinity Real Estate Inc. participates in the Regional Multiple Listing Service of Minnesota, Inc Broker Reciprocity (sm) program, allowing us to display other broker's listings on our website. All properties are subject to prior sale, change or withdrawal.



Call Affinity Real Estate

**218-237-3333**

[info@affinityrealestate.com](mailto:info@affinityrealestate.com)



Affinity Real Estate - 600 Park Avenue South - Park Rapids MN 56470



website: [www.AffinityRealEstate.com](http://www.AffinityRealEstate.com) | email: [info@affinityrealestate.com](mailto:info@affinityrealestate.com) | office: 218-237-3333 | fax:218-237-3377



**\$849,900**  
MLS 7071172 Residential  
Income  
781 Palomino Avenue  
Pillager MN 56473



website: [www.AffinityRealEstate.com](http://www.AffinityRealEstate.com) | email: [info@affinityrealestate.com](mailto:info@affinityrealestate.com) | office: 218-237-3333 | fax: 218-237-3377

**Affinity**  
REAL ESTATE INC

**\$849,900**  
MLS 7071172 Residential  
Income  
781 Palomino Avenue  
Pillager MN 56473



website: [www.AffinityRealEstate.com](http://www.AffinityRealEstate.com) | email: [info@affinityrealestate.com](mailto:info@affinityrealestate.com) | office: 218-237-3333 | fax:218-237-3377



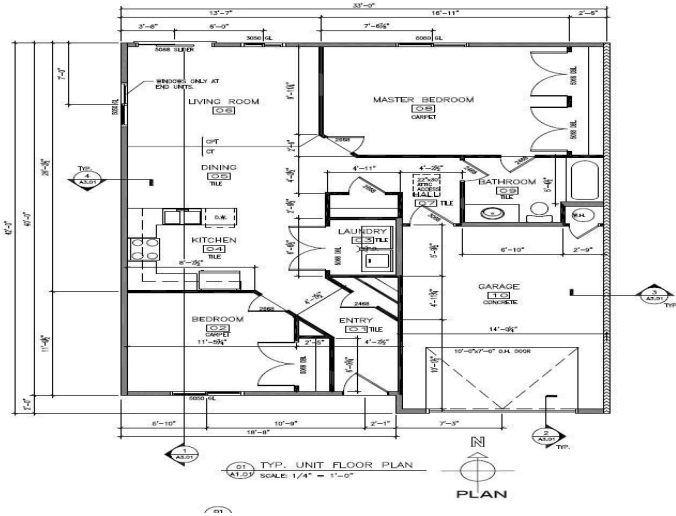
**\$849,900**  
MLS 7071172 Residential  
Income  
781 Palomino Avenue  
Pillager MN 56473



website: [www.AffinityRealEstate.com](http://www.AffinityRealEstate.com) | email: [info@affinityrealestate.com](mailto:info@affinityrealestate.com) | office: 218-237-3333 | fax:218-237-3377



**\$849,900**  
MLS 7071172 Residential  
Income  
781 Palomino Avenue  
Pillager MN 56473



website: [www.AffinityRealEstate.com](http://www.AffinityRealEstate.com) | email: [info@affinityrealestate.com](mailto:info@affinityrealestate.com) | office: 218-237-3333 | fax:218-237-3377



**\$849,900**  
 MLS 7071172 Residential  
 Income  
 781 Palomino Avenue  
 Pillager MN 56473