



MLS 7071202 Residential

**\$219,000**

1,396 sq ft  
3 bedrooms  
2 baths

616 Irene Avenue  
Ironton MN 56455

Status: Active

**Description:**

Nestled on a desirable corner lot in the heart of Ironton, this charming 3-bedroom, 2-bathroom home offers the perfect blend of comfort, convenience, and Northwoods lifestyle. Enjoy the warmth of southern exposure with peaceful views overlooking an open field right from your own home. The updated kitchen and bathroom adds a fresh, modern touch, while central air keeps you cool all summer long. Car enthusiasts, hobbyists, and outdoor adventurers alike will love the impressive 3-stall heated garage ideal for storing all your toys and gear year-round. Step outside and you're directly across the street from Morningside Park, making it the perfect setting for families and those who love easy access to green space. Located just minutes from the nationally recognized Cuyuna Country State Recreation Area renowned for world-class mountain biking, fishing, kayaking, and more plus it's near Crosby Memorial Park, this home puts year-round recreation right at your doorstep. Whether you're hitting the trails, casting a line, or simply soaking in the natural beauty of the Cuyuna Lakes region, this location truly has it all. A rare find in a sought-after community don't miss your opportunity to make this one home.

**Additional Details:**


Year Built	1960
Lot Acres	0.26
Lot Dimensions	74x139x83x120
Garage Stalls	3
School District	182
Taxes	\$1,168
Taxes with Assessments	\$1,168
Tax Year	2025

**Additional Features:**

**Basement:** Block, Full, Walkout **Fuel:** Natural Gas **Garage:** 3 **Heat:** Forced Air **Sewer:** City Sewer/Connected **Water:** City Water/Connected **Air Conditioning:** Central Air

**Driving Directions:**

From 4 way stop in Crosby go West on Highway 210 towards Brainerd Left on Irene Ave follow to sign on Right.



Listed By:  
Coldwell Banker Crown Realtors

Affinity Real Estate Inc. participates in the Regional Multiple Listing Service of Minnesota, Inc Broker Reciprocity (sm) program, allowing us to display other broker's listings on our website. All properties are subject to prior sale, change or withdrawal.



**Call Affinity Real Estate**  
**218-237-3333**  
**info@affinityrealestate.com**

Affinity Real Estate - 600 Park Avenue South - Park Rapids MN 56470



website: [www.AffinityRealEstate.com](http://www.AffinityRealEstate.com) | email: [info@affinityrealestate.com](mailto:info@affinityrealestate.com) | office: 218-237-3333 | fax:218-237-3377

**Affinity**  
REAL ESTATE INC

**\$219,000**  
MLS 7071202 Residential  
616 Irene Avenue  
Ironton MN 56455



website: [www.AffinityRealEstate.com](http://www.AffinityRealEstate.com) | email: [info@affinityrealestate.com](mailto:info@affinityrealestate.com) | office: 218-237-3333 | fax:218-237-3377

**Affinity**  
REAL ESTATE INC

**\$219,000**  
MLS 7071202 Residential  
616 Irene Avenue  
Ironton MN 56455



website: [www.AffinityRealEstate.com](http://www.AffinityRealEstate.com) | email: [info@affinityrealestate.com](mailto:info@affinityrealestate.com) | office: 218-237-3333 | fax:218-237-3377

**Affinity**  
REAL ESTATE INC

**\$219,000**  
MLS 7071202 Residential  
616 Irene Avenue  
Ironton MN 56455



website: [www.AffinityRealEstate.com](http://www.AffinityRealEstate.com) | email: [info@affinityrealestate.com](mailto:info@affinityrealestate.com) | office: 218-237-3333 | fax: 218-237-3377

**Affinity**  
REAL ESTATE INC

**\$219,000**  
MLS 7071202 Residential  
616 Irene Avenue  
Ironton MN 56455



**AREA OVERVIEW**

**OPEN DAILY: 8 AM - 10 PM**

Mountain bike trail courses will be posted on the CCSRA website and at obvious locations in the field.

**Park Facilities and Features:**

- 33 Campsites (66 acres)
- 1 Group camp
- 3 Yurts
- 1.4 miles of accessible trail
- 7.5 miles of adaptive biking trails
- Dedicated trout lakes
- Scuba diving opportunities
- Swimming beaches at Portsmouth
- Campground and Rally Center
- Mountain bike trails
- Groomed fat tire bike trails in winter
- Cuyuna Lakes State Trail
- 1.5 miles, paved

**ABOUT CUYUNA COUNTRY STATE RECREATION AREA**

Abandoned by mining companies more than 30 years ago, this area now boasts 5,000 acres of regenerated vegetation. The area offers a variety of recreation opportunities including biking (paved and mountain bike trails), snowmobiling, fishing, boating, hiking, wildlife-watching, scuba diving, camping and more.

The 59-mile long mountain bike trail system covers nearly 800 acres. Check out the Tawkey Mine Lake, or for a great view, go west through the Miner's Mountain Rally Center to see the Miner's Mountain Overlook and the Huntington Mine Lake.

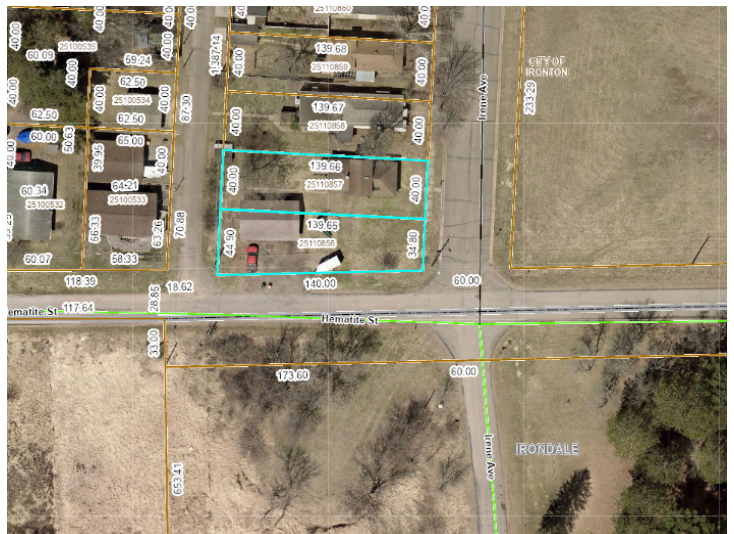
When it rains, the single track trails will be immediately closed to all users (foot or bike) until trail conditions dry out or improve. Please contact the park office for up-to-date information or visit the CCSRA website.

In addition to 27 miles of natural shoreline, six mine lakes connect to create 367 acres of continuous water, perfect for exploring by boat or canoe. Anglers can cast a line for trout (with a trout stamp), northern, bass, crappie or sunfish.

Divers will find clear water with sheer walls and flat terraces, characteristic of the mine roads, railroads and other remnants of the mining industry.

**NOTE: Hiking is allowed on the mountain bike trails, unless posted restricted.**

Trails continue into Crow Wing State Forest. For more information, visit [outdoors.mn.gov/forest](http://outdoors.mn.gov/forest)



website: [www.AffinityRealEstate.com](http://www.AffinityRealEstate.com) | email: [info@affinityrealestate.com](mailto:info@affinityrealestate.com) | office: 218-237-3333 | fax: 218-237-3377



**\$219,000**  
 MLS 7071202 Residential  
 616 Irene Avenue  
 Ironton MN 56455