



MLS 7071424 Residential

\$229,000

1,540 sq ft
3 bedrooms
2 baths

211 Central Avenue
Clitherall MN 56524

Status: Active

Description:

Life is sweet when you make your home in the heart of Lakes Country! This 3 bed, 2 bath modular home in central Clitherall has been thoughtfully updated and lovingly cared for. From your first step through the door, you'll feel the pride of ownership in this Friendship home, installed in 2002. The open floor plan is bright and inviting, making it easy to imagine your new life here. The primary suite boasts a large closet, attached full bath with garden tub and full-sized shower, and easy walk-through access to the laundry room. Two more generously sized bedrooms and a full bath round out this comfortable home.

The outdoor spaces help this property to truly shine. The detached, three-stall garage is heated and insulated for year-round, climate controlled storage. At 1/4 acre, the corner lots offers space to stretch out and enjoy Minnesota's changing seasons. A fenced backyard adds peace of mind and extra privacy on an already quiet street.

After having been loved by one owner for over 20 years, this home is ready to welcome you in for its new chapter! Outdoor and water recreation is within arms reach - Clitherall, Stuart, West Battle, and East Battle lakes are all just a few minutes drive. Spend your day exploring Glendalough State Park, the miles of walking/bike trails, and the nearby towns of Battle Lake, Vining, and Henning; the opportunities here are truly endless!

Additional Details:

Year Built	2002
Lot Acres	0.258
Lot Dimensions	75x150
Garage Stalls	3
School District	542
Taxes	\$696
Taxes with Assessments	\$696
Tax Year	2025

Additional Features:

Basement: None **Fuel:** Propane **Garage:** 3 **Heat:** Forced Air **Sewer:** Private Sewer **Water:** Drilled **Air Conditioning:** Central Air

Driving Directions:

From Hwy 210 turn N on Hwy 5, then right onto Main, then left onto [redacted] or left



Listed By:
Weichert, Realtors - Paulson Land Co

Affinity Real Estate Inc. participates in the Regional Multiple Listing Service of Minnesota, Inc Broker Reciprocity (sm) program, allowing us to display other broker's listings on our website. All properties are subject to prior sale, change or withdrawal.



Call Affinity Real Estate

218-237-3333

info@affinityrealestate.com



Affinity Real Estate - 600 Park Avenue South - Park Rapids MN 56470



website: www.AffinityRealEstate.com | email: info@affinityrealestate.com | office: 218-237-3333 | fax:218-237-3377



\$229,000
MLS 7071424 Residential
211 Central Avenue
Clitherall MN 56524



website: www.AffinityRealEstate.com | email: info@affinityrealestate.com | office: 218-237-3333 | fax: 218-237-3377

Affinity
REAL ESTATE INC

\$229,000
MLS 7071424 Residential
211 Central Avenue
Clitherall MN 56524



website: www.AffinityRealEstate.com | email: info@affinityrealestate.com | office: 218-237-3333 | fax: 218-237-3377

Affinity
REAL ESTATE INC

\$229,000
MLS 7071424 Residential
211 Central Avenue
Clitherall MN 56524



website: www.AffinityRealEstate.com | email: info@affinityrealestate.com | office: 218-237-3333 | fax:218-237-3377

Affinity
REAL ESTATE INC

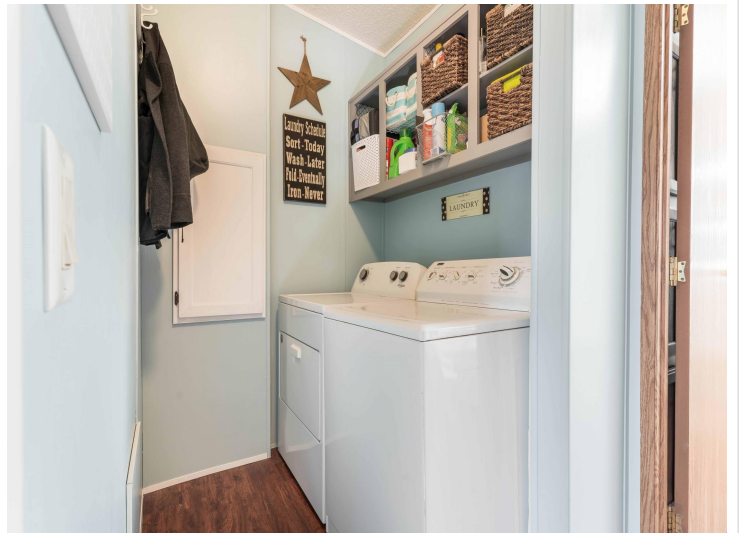
\$229,000
MLS 7071424 Residential
211 Central Avenue
Clitherall MN 56524



website: www.AffinityRealEstate.com | email: info@affinityrealestate.com | office: 218-237-3333 | fax:218-237-3377



\$229,000
MLS 7071424 Residential
211 Central Avenue
Clitherall MN 56524



website: www.AffinityRealEstate.com | email: info@affinityrealestate.com | office: 218-237-3333 | fax: 218-237-3377

Affinity
REAL ESTATE INC

\$229,000
MLS 7071424 Residential
211 Central Avenue
Clitherall MN 56524



website: www.AffinityRealEstate.com | email: info@affinityrealestate.com | office: 218-237-3333 | fax: 218-237-3377



\$229,000
MLS 7071424 Residential
211 Central Avenue
Clitherall MN 56524



website: www.AffinityRealEstate.com | email: info@affinityrealestate.com | office: 218-237-3333 | fax: 218-237-3377

Affinity
REAL ESTATE INC

\$229,000
MLS 7071424 Residential
211 Central Avenue
Clitherall MN 56524



website: www.AffinityRealEstate.com | email: info@affinityrealestate.com | office: 218-237-3333 | fax:218-237-3377

Affinity
REAL ESTATE INC

\$229,000
MLS 7071424 Residential
211 Central Avenue
Clitherall MN 56524

