



MLS 7071900 Residential

**\$559,000**

3,036 sq ft  
4 bedrooms  
4 baths

2120 Grotte Avenue  
Bemidji MN 56601

Status: Active

**Description:**

Discover a rare opportunity to own a home that truly stands the test of time—"they don't build like this anymore." Situated on a premium lot, this impressive property combines solid construction, modern updates, and expansive space, offering exceptional value in today's real estate market.

This beautifully maintained home features four generously sized bedrooms and four well-appointed bathrooms, providing a versatile layout designed for comfort and functionality. The entire interior has been completely repainted and professionally cleaned, creating a fresh, move-in-ready experience that enhances the home's already inviting atmosphere.

At the center of the home is a bright and spacious kitchen and dining area, highlighted by large windows that flood the space with natural light. The modern appliances complement the functional layout, making this kitchen ideal for preparing meals, entertaining guests, or simply enjoying the open-concept design. The expansive window placement not only enhances illumination but also provides appealing views of the premium lot, adding to the overall sense of openness. Quality craftsmanship is evident throughout, including the installation of Anderson windows known for their durability, energy efficiency, and timeless design. These windows contribute to long-term value while elevating the home's aesthetic appeal.

One of the most remarkable features is the unmatched garage capacity. The property includes both a triple oversized garage and an additional double oversized garage, offering extensive space for vehicles, storage, workshop potential, or recreational equipment. This rare combination is ideal for those seeking flexibility and functionality beyond standard garage offerings.

For added peace of mind, the home comes complete with a home warranty, enhancing confidence in your investment. Whether you're looking to entertain, relax, or enjoy a thoughtfully designed living space, this property delivers on every level.

With its prime lot positioning, extensive upgrades, spacious floor plan, and exceptional garage capacity, this home is a standout choice in residential real estate. Don't miss the chance to experience a unique blend of quality, space, and modern convenience in a home built to exceed expectations.

**Additional Details:**

Year Built 1997

Lot Acres 2

Lot Dimensions 175-218-329-105-450-321

Listed By Edina Realty, Inc.

Affinity Real Estate Inc. participates in the Regional Multiple Listing Service of Minnesota, Inc Broker Reciprocity (sm) program, allowing Taxed with Assesments listing on our website. All properties are subject to prior sale, change or withdrawal.

Tax Year 2026



Call Affinity Real Estate

**218-237-3333**

[info@affinityrealestate.com](mailto:info@affinityrealestate.com)



Affinity Real Estate - 600 Park Avenue South - Park Rapids MN 56470



website: [www.AffinityRealEstate.com](http://www.AffinityRealEstate.com) | email: [info@affinityrealestate.com](mailto:info@affinityrealestate.com) | office: 218-237-3333 | fax: 218-237-3377

**Affinity**  
REAL ESTATE INC

**\$559,000**  
MLS 7071900 Residential  
2120 Grotte Avenue  
Bemidji MN 56601



website: [www.AffinityRealEstate.com](http://www.AffinityRealEstate.com) | email: [info@affinityrealestate.com](mailto:info@affinityrealestate.com) | office: 218-237-3333 | fax:218-237-3377



**\$559,000**  
MLS 7071900 Residential  
2120 Grotte Avenue  
Bemidji MN 56601



website: [www.AffinityRealEstate.com](http://www.AffinityRealEstate.com) | email: [info@affinityrealestate.com](mailto:info@affinityrealestate.com) | office: 218-237-3333 | fax: 218-237-3377

**Affinity**  
REAL ESTATE INC

**\$559,000**  
MLS 7071900 Residential  
2120 Grotte Avenue  
Bemidji MN 56601



website: [www.AffinityRealEstate.com](http://www.AffinityRealEstate.com) | email: [info@affinityrealestate.com](mailto:info@affinityrealestate.com) | office: 218-237-3333 | fax:218-237-3377

**Affinity**  
REAL ESTATE INC

**\$559,000**  
MLS 7071900 Residential  
2120 Grotte Avenue  
Bemidji MN 56601



website: [www.AffinityRealEstate.com](http://www.AffinityRealEstate.com) | email: [info@affinityrealestate.com](mailto:info@affinityrealestate.com) | office: 218-237-3333 | fax:218-237-3377

**Affinity**  
REAL ESTATE INC

**\$559,000**  
MLS 7071900 Residential  
2120 Grotte Avenue  
Bemidji MN 56601



website: [www.AffinityRealEstate.com](http://www.AffinityRealEstate.com) | email: [info@affinityrealestate.com](mailto:info@affinityrealestate.com) | office: 218-237-3333 | fax:218-237-3377



**\$559,000**  
MLS 7071900 Residential  
2120 Grotte Avenue  
Bemidji MN 56601



website: [www.AffinityRealEstate.com](http://www.AffinityRealEstate.com) | email: [info@affinityrealestate.com](mailto:info@affinityrealestate.com) | office: 218-237-3333 | fax:218-237-3377

**Affinity**  
REAL ESTATE INC

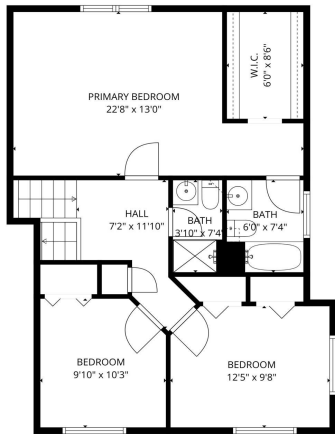
**\$559,000**  
MLS 7071900 Residential  
2120 Grotte Avenue  
Bemidji MN 56601



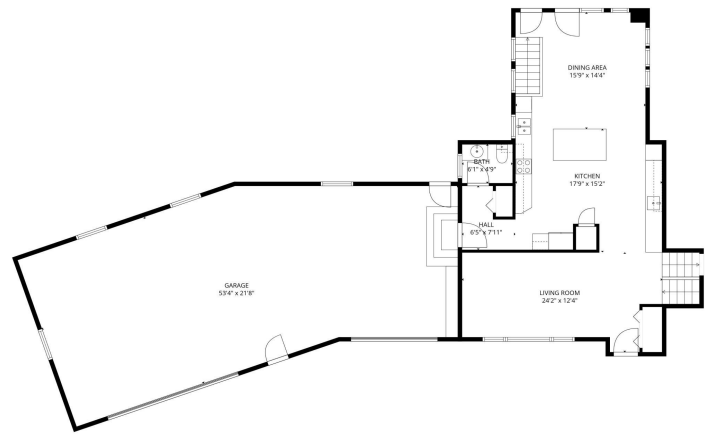
website: [www.AffinityRealEstate.com](http://www.AffinityRealEstate.com) | email: [info@affinityrealestate.com](mailto:info@affinityrealestate.com) | office: 218-237-3333 | fax:218-237-3377



**\$559,000**  
MLS 7071900 Residential  
2120 Grotte Avenue  
Bemidji MN 56601



TOTAL: 2954 sq. ft.  
 Basement: 682 sq. ft., 1st floor: 671 sq. ft., 2nd floor: 870 sq. ft., 3rd floor: 731 sq. ft.  
 EXCLUDED AREAS: UTILITY: 99 sq. ft., GARAGE: 1054 sq. ft., WALLS: 314 sq. ft.  
NOTES: PLAN PREPARED BY CUBBERG AND ASSOCIATES LIMITED LIABILITY COMPANY FOR THE SELLER.

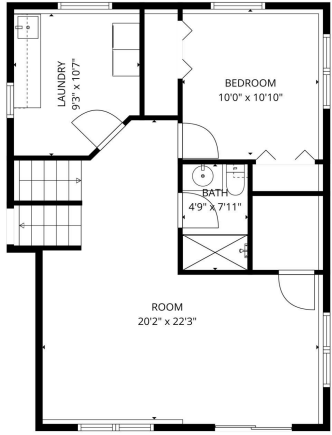


TOTAL: 2954 sq. ft.  
 Basement: 682 sq. ft., 1st floor: 671 sq. ft., 2nd floor: 870 sq. ft., 3rd floor: 731 sq. ft.  
 EXCLUDED AREAS: UTILITY: 99 sq. ft., GARAGE: 1054 sq. ft., WALLS: 314 sq. ft.  
NOTES: PLAN PREPARED BY CUBBERG AND ASSOCIATES LIMITED LIABILITY COMPANY FOR THE SELLER.

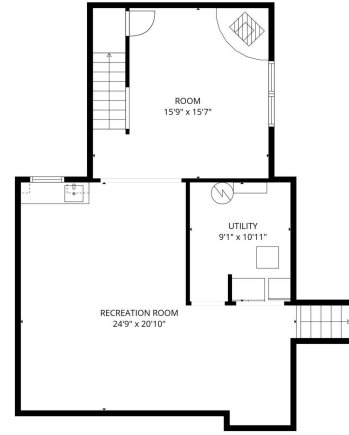
website: [www.AffinityRealEstate.com](http://www.AffinityRealEstate.com) | email: [info@affinityrealestate.com](mailto:info@affinityrealestate.com) | office: 218-237-3333 | fax: 218-237-3377



**\$559,000**  
 MLS 7071900 Residential  
 2120 Grotte Avenue  
 Bemidji MN 56601



**TOTAL: 2954 sq. ft**  
 Basement: 682 sq. ft, 1st floor: 671 sq. ft, 2nd floor: 870 sq. ft, 3rd floor: 731 sq. ft  
 EXCLUDED AREAS: UTILITY: 99 sq. ft, GARAGE: 1054 sq. ft, WALLS: 314 sq. ft  
PLAN CREATED BY CURTIS AND ASSOCIATES. DIMENSIONS SHOWN ONLY. PLEASE SEE ALL DIMENSIONS.



**TOTAL: 2954 sq. ft**  
 Basement: 682 sq. ft, 1st floor: 671 sq. ft, 2nd floor: 870 sq. ft, 3rd floor: 731 sq. ft  
 EXCLUDED AREAS: UTILITY: 99 sq. ft, GARAGE: 1054 sq. ft, WALLS: 314 sq. ft  
PLAN CREATED BY CURTIS AND ASSOCIATES. DIMENSIONS SHOWN ONLY. PLEASE SEE ALL DIMENSIONS.

website: [www.AffinityRealEstate.com](http://www.AffinityRealEstate.com) | email: [info@affinityrealestate.com](mailto:info@affinityrealestate.com) | office: 218-237-3333 | fax: 218-237-3377



**\$559,000**  
 MLS 7071900 Residential  
 2120 Grotte Avenue  
 Bemidji MN 56601