



MLS 7071917 Lake Home

\$2,995,000

5,226 sq ft
3 bedrooms
4 baths

13380 Rush Harbor Drive
Crosslake MN 56442

Waterfront: Rush-Hen

Status: Pending

Description:

Truly a Once-In-A-Lifetime opportunity to own your own private point on the highly sought after Whitefish Chain of Lakes...enjoy over an acre of beautifully manicured grounds with over 900' of shoreline and Spectacular Sunsets across Rush Lake. This architecturally designed Masterpiece is a blend of timeless craftsmanship, exceptional high-end finishes and meticulous thoughtful detail throughout. The light-filled main level was designed with entertaining large groups in mind and features a stunning entrance with a gorgeous Cherrywood staircase, a massive great room with soaring cathedral beamed ceilings, 2 stone wood burning fireplaces, walls of lakeside glass, a dream kitchen equipped with a huge breakfast bar-granite countertops-spacious walk-in pantry-a private wine cellar-a built-in wet bar with easy access to the private lakeside oasis...experience outdoor living at its finest with beautiful perennial gardens, custom water features, a pergola, your very own putting green, an expansive fieldstone patio, a well-appointed outdoor kitchen and gas firepit. Other impressive highlights of this great property include a formal dining, luxury hardwood flooring throughout, a casual sitting area/sunroom with fireplace, a huge main floor primary suite with a spa-like bath-dual closets, a personal office, main level laundry, two additional upper-level generous sized ensuites...one has a private lakeside deck, a loft like sitting area and a long paved driveway that welcomes guest at the entrance with an artist-crafted Elk Horn electric gate...The entire exterior of the home has been recently stained.

Additional Details:

Year Built	2010
Lot Acres	1.26
Lot Dimensions	448 x 185 x 426 x 54
Garage Stalls	2
School District	186
Taxes	\$23,564
Taxes with Assessments	\$22,516
Tax Year	2026

Additional Features:

Fuel: Natural Gas, Solar **Heat:** Forced Air, Geothermal, In-Floor Heating

Driving Directions:

From the intersection of Highway 66 and Highway 69, turn right on Highway 66 for 6.1 miles to, left on Rush Harbor Drive for 0.2 miles to the home on the point. **NO SIGN ON THE POINT** FOLLOW IN FOR 0.2 MILES TO THE HOME ON THE POINT.

PROPERTY LISTED BY: Affinity Real Estate, Inc. participates in the Regional Multiple Listing Service of Minnesota, Inc Broker Reciprocity (sm) program, allowing us to display other broker's listings on our website. All properties are subject to prior sale, change or withdrawal.



Call Affinity Real Estate

218-237-3333

info@affinityrealestate.com



Affinity Real Estate - 600 Park Avenue South - Park Rapids MN 56470



website: www.AffinityRealEstate.com | email: info@affinityrealestate.com | office: 218-237-3333 | fax: 218-237-3377

Affinity
REAL ESTATE INC

\$2,995,000
MLS 7071917 Lake Home
13380 Rush Harbor Drive
Crosslake MN 56442



website: www.AffinityRealEstate.com | email: info@affinityrealestate.com | office: 218-237-3333 | fax: 218-237-3377

Affinity
REAL ESTATE INC

\$2,995,000
MLS 7071917 Lake Home
13380 Rush Harbor Drive
Crosslake MN 56442



website: www.AffinityRealEstate.com | email: info@affinityrealestate.com | office: 218-237-3333 | fax:218-237-3377

Affinity
REAL ESTATE INC

\$2,995,000
MLS 7071917 Lake Home
13380 Rush Harbor Drive
Crosslake MN 56442



website: www.AffinityRealEstate.com | email: info@affinityrealestate.com | office: 218-237-3333 | fax: 218-237-3377

Affinity
REAL ESTATE INC

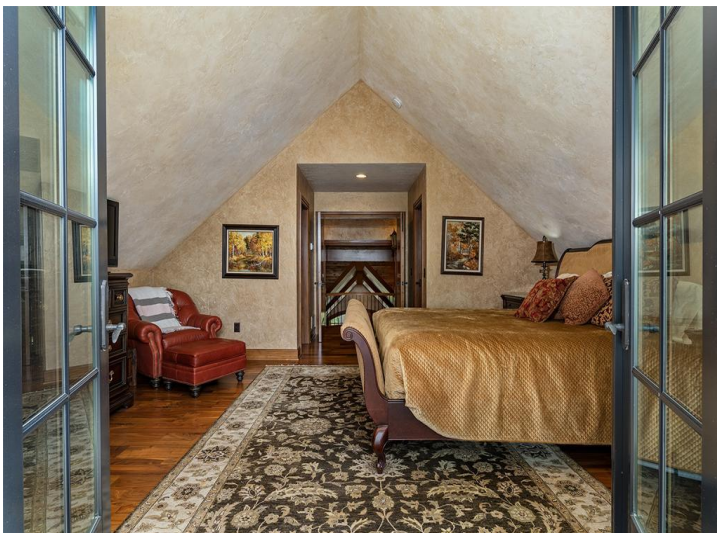
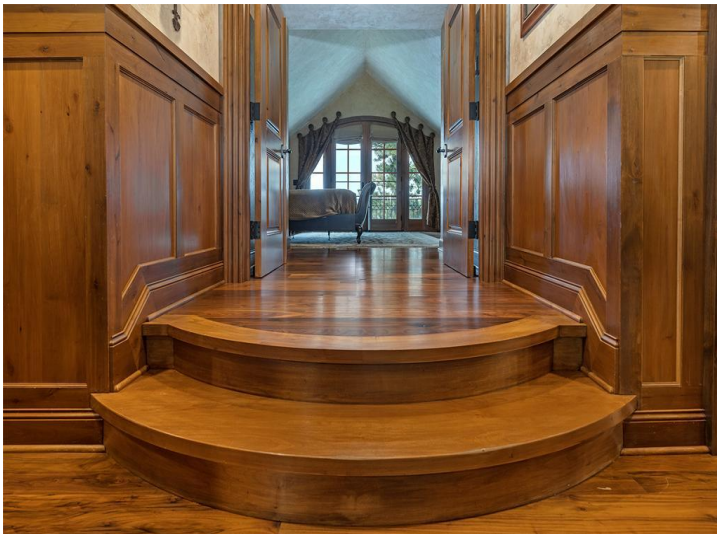
\$2,995,000
MLS 7071917 Lake Home
13380 Rush Harbor Drive
Crosslake MN 56442



website: www.AffinityRealEstate.com | email: info@affinityrealestate.com | office: 218-237-3333 | fax:218-237-3377



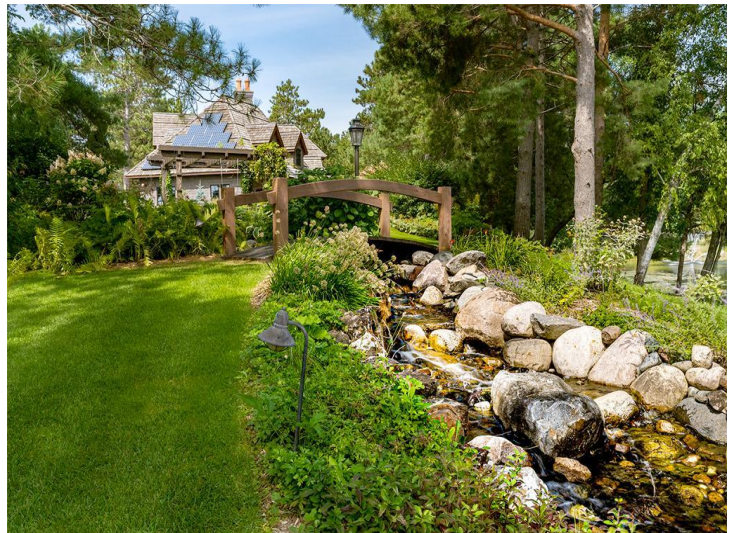
\$2,995,000
MLS 7071917 Lake Home
13380 Rush Harbor Drive
Crosslake MN 56442



website: www.AffinityRealEstate.com | email: info@affinityrealestate.com | office: 218-237-3333 | fax: 218-237-3377

Affinity
REAL ESTATE INC

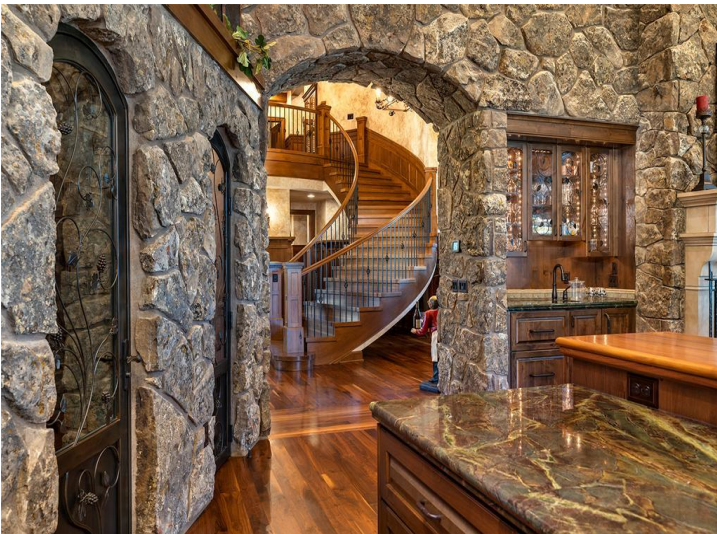
\$2,995,000
MLS 7071917 Lake Home
13380 Rush Harbor Drive
Crosslake MN 56442



website: www.AffinityRealEstate.com | email: info@affinityrealestate.com | office: 218-237-3333 | fax: 218-237-3377

Affinity
REAL ESTATE INC

\$2,995,000
MLS 7071917 Lake Home
13380 Rush Harbor Drive
Crosslake MN 56442



website: www.AffinityRealEstate.com | email: info@affinityrealestate.com | office: 218-237-3333 | fax:218-237-3377



\$2,995,000
MLS 7071917 Lake Home
13380 Rush Harbor Drive
Crosslake MN 56442



This property also has a...
**VIDEO
TOUR**

website: www.AffinityRealEstate.com | email: info@affinityrealestate.com | office: 218-237-3333 | fax:218-237-3377



\$2,995,000
MLS 7071917 Lake Home
13380 Rush Harbor Drive
Crosslake MN 56442