



MLS 7071967 Lake Land

**\$95,000**



These data are provided on an "AS-IS" basis, without warranty of any type, expressed or implied, including but not limited to any warranty as to their performance, merchantability, or fitness for any particular purpose.

2 acres		Becker County
1.2817	Date: 5/12/2026	

**Description:**

New Price! Location! Location! Just North of Cormorant Village on the creek! Beautiful lot in the heart of the Cormorant lakes area! Creek View's Lot 16 is one of best locations and is the largest lot in the development. This 2 acre level lot is one of the rare lots that is situated on Spring Creek. This lot has beautiful southern views and mature trees. The proximity to Big Cormorant Lake and Cormorant Village is ideal.

**Additional Details:**

Lot Acres	2
Lot Dimensions	150 x Irreg
School District	2889
Taxes	\$194
Taxes with Assessments	\$194
Tax Year	2026

**Additional Features:**

**Driving Directions:**

South Big Cormorant Road to Creek View Dr. property of the left.



Listed By:  
Counselor Realty Detroit Lakes

Affinity Real Estate Inc. participates in the Regional Multiple Listing Service of Minnesota, Inc Broker Reciprocity (sm) program, allowing us to display other broker's listings on our website. All properties are subject to prior sale, change or withdrawal.



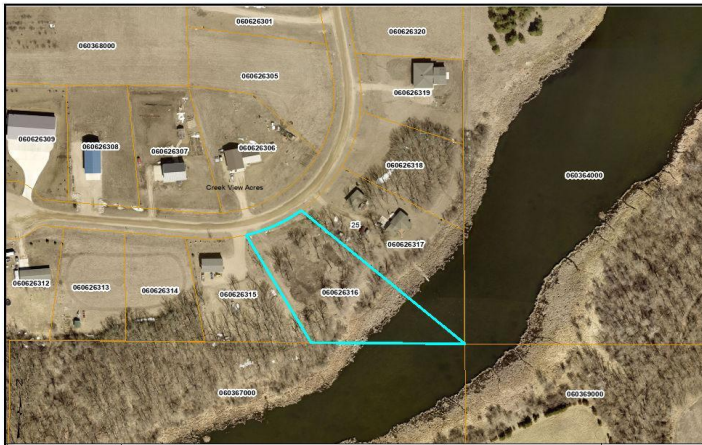
Call Affinity Real Estate

**218-237-3333**

[info@affinityrealestate.com](mailto:info@affinityrealestate.com)



Affinity Real Estate - 600 Park Avenue South - Park Rapids MN 56470



These data are provided on an "AS-IS" basis, without warranty of any type, expressed or implied, including but not limited to any warranty as to their performance, merchantability, or fitness for any particular purpose.

12.817

2 acres

Becker County

Date: 5/12/2026



website: [www.AffinityRealEstate.com](http://www.AffinityRealEstate.com) | email: [info@affinityrealestate.com](mailto:info@affinityrealestate.com) | office: 218-237-3333 | fax: 218-237-3377



**\$95,000**  
 MLS 7071967 Lake Land  
 11335 Creek View Drive  
 Pelican Rapids MN 56572



website: [www.AffinityRealEstate.com](http://www.AffinityRealEstate.com) | email: [info@affinityrealestate.com](mailto:info@affinityrealestate.com) | office: 218-237-3333 | fax:218-237-3377



**\$95,000**  
MLS 7071967 Lake Land  
11335 Creek View Drive  
Pelican Rapids MN 56572