



MLS 7072015 Lake Home

\$950,000

1,079 sq ft
3 bedrooms
2 baths

34514 Reginawood Road
Grand Rapids MN 55744

Waterfront: Pokegama

Status: Coming Soon

Description:

A heavenly haven on the most desirable location on Pokegama Lake. This cabin is one of a kind in the north woods. A year round cabin that is serenely appointed to transport you to a peaceful retreat or stunning year round home. Down a private driveway, this 2 bedroom, 1.5 bath home has a beautiful sleeping loft that allows you to see the lake when you wake up in the morning. Downstairs there is a cozy bedroom and bath. An open floorplan includes a cook's kitchen with Wolf range, farmer's sink and ample cooking and eating space, dining area, living room with a gorgeous wood burning fireplace, as well as a comfy separate media alcove. A wraparound deck overlooking the lake, perfect for entertaining. There is a bunkhouse on the lake where you can fall asleep to the waves lapping on the shore after taking a sauna and swim. The house is decorated from Design Within Reach, Ligne-Roset, Arte de Mexico and thoughtfully curated vintage pieces. It is truly one of the most special places you can find.

Additional Details:

Year Built	1991
Lot Acres	2.23
Lot Dimensions	150x410x320x448
Garage Stalls	1
School District	318
Taxes	\$5,305
Taxes with Assessments	\$5,386
Tax Year	2025

Additional Features:

Basement: Crawl Space **Fuel:** Propane **Garage:** 1 **Heat:** Forced Air, Fireplace(s) **Sewer:** Mound Septic, Private Sewer **Water:** 4-Inch Submersible, Drilled **Air Conditioning:** None

Driving Directions:

Take Hwy 169 south, to right on crystal springs rd, to CR-468, to property on right.

 Listed By:
EDGE OF THE WILDERNESS REALTY

Affinity Real Estate Inc. participates in the Regional Multiple Listing Service of Minnesota, Inc Broker Reciprocity (sm) program, allowing us to display other broker's listings on our website. All properties are subject to prior sale, change or withdrawal.

 **Call Affinity Real Estate**
218-237-3333
info@affinityrealestate.com

  
Affinity Real Estate - 600 Park Avenue South - Park Rapids MN 56470



website: www.AffinityRealEstate.com | email: info@affinityrealestate.com | office: 218-237-3333 | fax:218-237-3377



\$950,000
MLS 7072015 Lake Home
34514 Reginawood Road
Grand Rapids MN 55744



website: www.AffinityRealEstate.com | email: info@affinityrealestate.com | office: 218-237-3333 | fax:218-237-3377



\$950,000
MLS 7072015 Lake Home
34514 Reginawood Road
Grand Rapids MN 55744



website: www.AffinityRealEstate.com | email: info@affinityrealestate.com | office: 218-237-3333 | fax: 218-237-3377

Affinity
REAL ESTATE INC

\$950,000
MLS 7072015 Lake Home
34514 Reginawood Road
Grand Rapids MN 55744



website: www.AffinityRealEstate.com | email: info@affinityrealestate.com | office: 218-237-3333 | fax: 218-237-3377

Affinity
REAL ESTATE INC

\$950,000
MLS 7072015 Lake Home
34514 Reginawood Road
Grand Rapids MN 55744



website: www.AffinityRealEstate.com | email: info@affinityrealestate.com | office: 218-237-3333 | fax: 218-237-3377

Affinity
REAL ESTATE INC

\$950,000
MLS 7072015 Lake Home
34514 Reginawood Road
Grand Rapids MN 55744



website: www.AffinityRealEstate.com | email: info@affinityrealestate.com | office: 218-237-3333 | fax: 218-237-3377

Affinity
REAL ESTATE INC

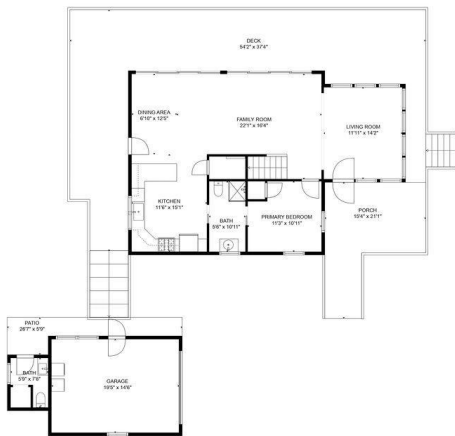
\$950,000
MLS 7072015 Lake Home
34514 Reginawood Road
Grand Rapids MN 55744



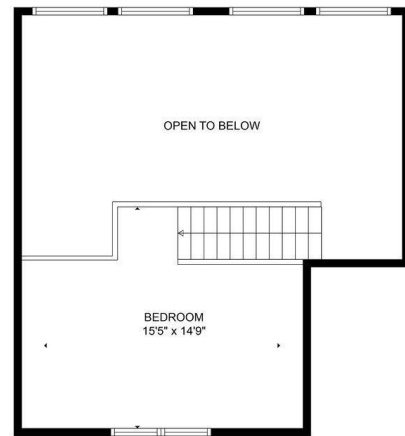
website: www.AffinityRealEstate.com | email: info@affinityrealestate.com | office: 218-237-3333 | fax: 218-237-3377



\$950,000
MLS 7072015 Lake Home
34514 Reginawood Road
Grand Rapids MN 55744



TOTAL: 1244 sq. ft.
 FLOOR 1: 1016 sq. ft. FLOOR 2: 228 sq. ft.
 EXCLUDED AREAS: GARAGE: 281 sq. ft. PATIO: 99 sq. ft. PORCH: 225 sq. ft.
 DECK: 900 sq. ft. OPEN TO BELOW: 352 sq. ft. LOW CEILING: 34 sq. ft.
 WALLS: 158 sq. ft.
 MEASUREMENTS ARE ESTIMATED. SEEING HIGHLY RELIABLE BUT NOT GUARANTEED



TOTAL: 1244 sq. ft.
 FLOOR 1: 1016 sq. ft. FLOOR 2: 228 sq. ft.
 EXCLUDED AREAS: GARAGE: 281 sq. ft. PATIO: 99 sq. ft. PORCH: 225 sq. ft.
 DECK: 900 sq. ft. OPEN TO BELOW: 352 sq. ft. LOW CEILING: 34 sq. ft.
 WALLS: 158 sq. ft.
 MEASUREMENTS ARE ESTIMATED. SEEING HIGHLY RELIABLE BUT NOT GUARANTEED

website: www.AffinityRealEstate.com | email: info@affinityrealestate.com | office: 218-237-3333 | fax: 218-237-3377



\$950,000
 MLS 7072015 Lake Home
 34514 Reginawood Road
 Grand Rapids MN 55744



TOTAL: 1264 sq. ft.
 FLOOR 1: 1016 sq. ft. FLOOR 2: 228 sq. ft.
 EXCLUDED AREAS: GARAGE: 281 sq. ft. PATIO: 99 sq. ft. PORCH: 225 sq. ft.
 DECK: 900 sq. ft. OPEN TO BELOW: 352 sq. ft. LOW CEILING: 34 sq. ft.
 WALLS: 158 sq. ft.
 MEASUREMENTS ARE ESTIMATED. DEPEND HEAVILY RELIABLE BUT NOT GUARANTEED

website: www.AffinityRealEstate.com | email: info@affinityrealestate.com | office: 218-237-3333 | fax: 218-237-3377



\$950,000
 MLS 7072015 Lake Home
 34514 Reginawood Road
 Grand Rapids MN 55744