



MLS 7072026 Residential

\$305,000

2,266 sq ft
3 bedrooms
2 baths

1225 Tower Road
Fergus Falls MN 56537

Status: Active

Description:

Spacious, well-maintained, and perfectly located on the edge of town—this 3 bedroom, 2 bathroom home has so much to offer and is sure to check many of your “must-have” items. The main floor offers a very spacious eat in kitchen, a large living room that overflows with natural light and the very desired 3 bedrooms on one level. When you head downstairs, you’ll be greeted by a massive family room that is perfect for movie nights, entertaining or just winding down. Outside you can take in the large, private backyard(complete with a honey crisp apple tree) and the beautiful landscaping from the maintenance free deck that has built in seating. The attached garage and the ample space within the home will leave no shortage of storage. You won’t want to miss this one; schedule your showing today!

Additional Details:

Year Built	1966
Lot Acres	0.56
Lot Dimensions	86 x 247 x 86 x 283
Garage Stalls	1
School District	544
Taxes	\$2,316
Taxes with Assessments	\$2,316
Tax Year	2026

Additional Features:

Basement: Block, Finished **Fuel:** Electric, Natural Gas **Garage:** 1 **Heat:** Forced Air **Sewer:** City Sewer - In Street **Water:** City Water/Connected, Well **Air Conditioning:** Central Air

Driving Directions:

From 94 head north on Tower Rd. Property will be on the right.



Listed By:
Central MN Realty LLC

Affinity Real Estate Inc. participates in the Regional Multiple Listing Service of Minnesota, Inc Broker Reciprocity (sm) program, allowing us to display other broker’s listings on our website. All properties are subject to prior sale, change or withdrawal.



Call Affinity Real Estate

218-237-3333

info@affinityrealestate.com



Affinity Real Estate - 600 Park Avenue South - Park Rapids MN 56470



website: www.AffinityRealEstate.com | email: info@affinityrealestate.com | office: 218-237-3333 | fax:218-237-3377



\$305,000
MLS 7072026 Residential
1225 Tower Road
Fergus Falls MN 56537



website: www.AffinityRealEstate.com | email: info@affinityrealestate.com | office: 218-237-3333 | fax: 218-237-3377

Affinity
REAL ESTATE INC

\$305,000
MLS 7072026 Residential
1225 Tower Road
Fergus Falls MN 56537



website: www.AffinityRealEstate.com | email: info@affinityrealestate.com | office: 218-237-3333 | fax:218-237-3377

Affinity
REAL ESTATE INC

\$305,000
MLS 7072026 Residential
1225 Tower Road
Fergus Falls MN 56537



website: www.AffinityRealEstate.com | email: info@affinityrealestate.com | office: 218-237-3333 | fax:218-237-3377



\$305,000
MLS 7072026 Residential
1225 Tower Road
Fergus Falls MN 56537



website: www.AffinityRealEstate.com | email: info@affinityrealestate.com | office: 218-237-3333 | fax:218-237-3377



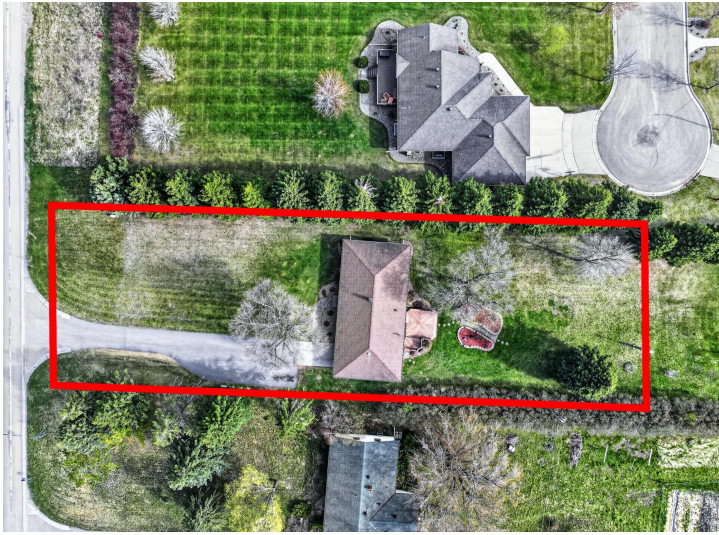
\$305,000
MLS 7072026 Residential
1225 Tower Road
Fergus Falls MN 56537



website: www.AffinityRealEstate.com | email: info@affinityrealestate.com | office: 218-237-3333 | fax:218-237-3377

Affinity
REAL ESTATE INC

\$305,000
MLS 7072026 Residential
1225 Tower Road
Fergus Falls MN 56537



website: www.AffinityRealEstate.com | email: info@affinityrealestate.com | office: 218-237-3333 | fax:218-237-3377



\$305,000
MLS 7072026 Residential
1225 Tower Road
Fergus Falls MN 56537