



MLS 7072030 Lake Land

**\$369,900**

**Description:**

A rare opportunity on the Roosevelt Lake Chain has arrived. This exceptional lakefront lot offers 200 feet of pristine sandy shoreline on one of Minnesota’s most desirable lakes. Roosevelt Lake is renowned for its deep, crystal-clear, spring-fed waters and outstanding recreation, including boating, fishing, swimming, and water sports.

Held by the same family for generations, this premier property combines privacy, natural beauty, and endless potential. The elevated building site captures stunning western exposure, delivering unforgettable sunset views across the lake. The deep lot, tucked near the end of a quiet road, creates a peaceful retreat surrounded by mature forest and unspoiled Northwoods scenery.

Located just two miles from the welcoming town of Outing, you’ll enjoy convenient access to local amenities while still feeling completely secluded. Outdoor enthusiasts will appreciate nearby access to the Emily–Outing ATV Trail system, Moose River ATV trails, and the expansive Land O’ Lakes State Forest. The trail network features over 70 miles of scenic riding through forests, rolling terrain, and lakeside landscapes.


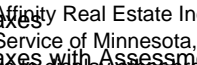
Roosevelt Lake spans over 1,500 acres across Cass and Crow Wing Counties and is highly regarded for its exceptional fishery. Anglers enjoy excellent walleye, largemouth and smallmouth bass, northern pike, muskellunge, crappie, bluegill, perch, and tullibee fishing.

Power is available at the road, and the property has been recently surveyed for added peace of mind. For buyers seeking even more space, adjoining land is also available—offering the rare chance to create a legacy estate on one of Minnesota’s most treasured lakes.

Whether you envision a private cabin retreat, a future family compound, or a year-round lakeside home, this property delivers an unmatched combination of beauty, recreation, and investment potential.

Schedule your private viewing today and experience the timeless appeal of Roosevelt Lake living.

**Additional Details:**

Lot Acres	2.2
	Listed By Edina Realty, Inc.
	200x555x204x496
Taxes	\$1,650
Taxes with Assessments	\$1,650
Tax Year	2026



**Call Affinity Real Estate**

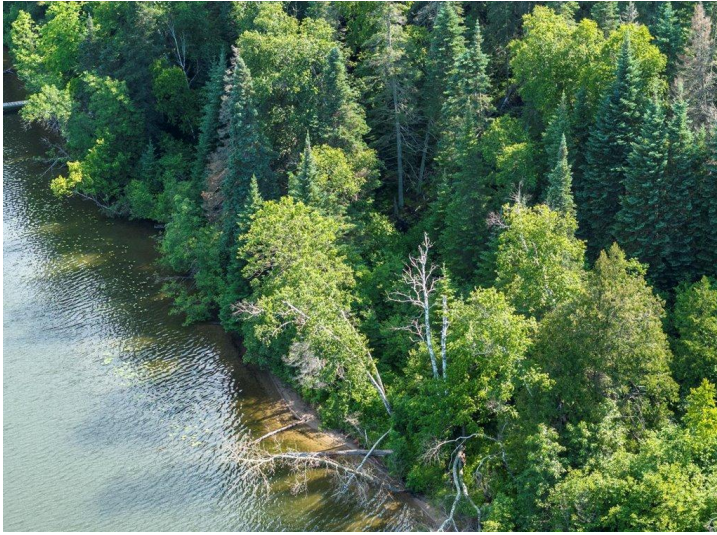
**218-237-3333**

**info@affinityrealestate.com**



**Affinity Real Estate - 600 Park Avenue South - Park Rapids MN 56470**

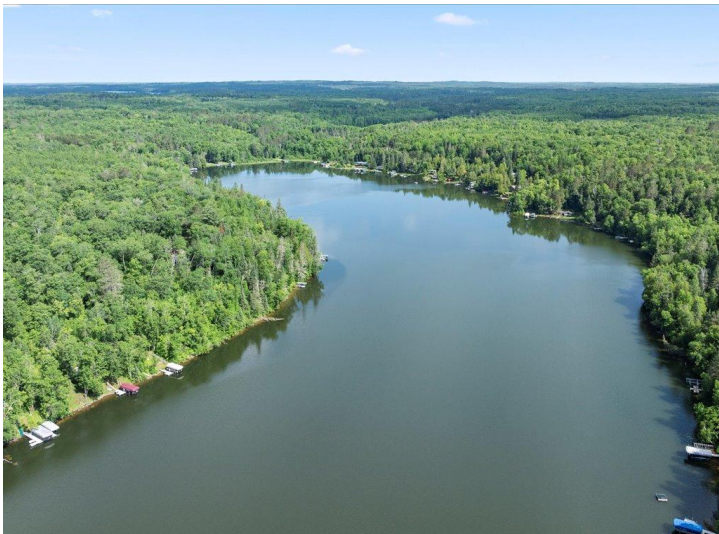
**Driving Directions:**



website: [www.AffinityRealEstate.com](http://www.AffinityRealEstate.com) | email: [info@affinityrealestate.com](mailto:info@affinityrealestate.com) | office: 218-237-3333 | fax:218-237-3377



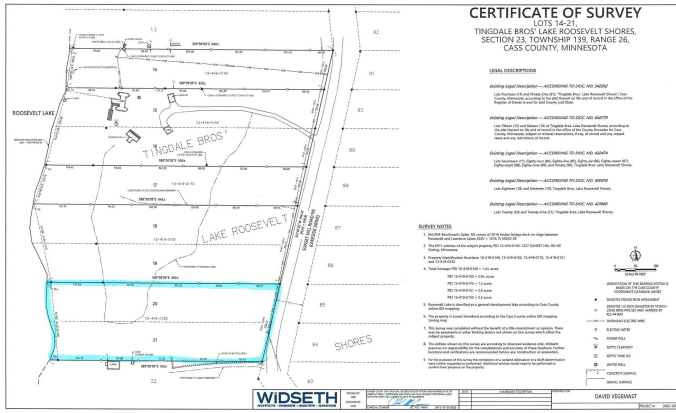
**\$369,900**  
MLS 7072030 Lake Land  
Lots 20 And 21 Sunset Hill  
Road NE  
Outing MN 56662



website: [www.AffinityRealEstate.com](http://www.AffinityRealEstate.com) | email: [info@affinityrealestate.com](mailto:info@affinityrealestate.com) | office: 218-237-3333 | fax:218-237-3377



**\$369,900**  
 MLS 7072030 Lake Land  
 Lots 20 And 21 Sunset Hill  
 Road NE  
 Outing MN 56662



website: [www.AffinityRealEstate.com](http://www.AffinityRealEstate.com) | email: [info@affinityrealestate.com](mailto:info@affinityrealestate.com) | office: 218-237-3333 | fax: 218-237-3377



**\$369,900**  
 MLS 7072030 Lake Land  
 Lots 20 And 21 Sunset Hill  
 Road NE  
 Outing MN 56662