



MLS 7072081 Residential

\$244,900

1,008 sq ft
2 bedrooms
1 baths

9403 White Sage Drive
Bemidji MN 56601

Status: Active

Description:

Brand new slab-on-grade home currently under construction! This thoughtfully designed 2 bedroom, 1 bathroom home offers easy one-level living with quality finishes throughout. The custom cabinetry in the kitchen, bathroom, and laundry room adds both style and functionality, creating a truly personalized feel. Enjoy the convenience of a modern layout, low-maintenance living, and the opportunity to own a brand new home from the ground up. Perfect for first-time buyers, downsizers, or anyone looking for efficient, single-level living in a fresh new space.

Additional Details:

Year Built	2026
Lot Acres	1.45
Lot Dimensions	332x190
Garage Stalls	2
School District	31
Taxes	\$326
Taxes with Assessments	(unreported)
Tax Year	2026

Additional Features:

Basement: None **Fuel:** Electric, Propane **Garage:** 2 **Heat:** Ductless Mini-Split, In-Floor Heating **Sewer:** Septic System Compliant - Yes
Water: 4-Inch Submersible **Air Conditioning:** Ductless Mini-Split

Driving Directions:

Head north on 89 from HWY 2 about 5 miles. Turn left onto Scribner RD. Turn right onto White Sage DR



Listed By:
Real Broker, LLC

Affinity Real Estate Inc. participates in the Regional Multiple Listing Service of Minnesota, Inc Broker Reciprocity (sm) program, allowing us to display other broker's listings on our website. All properties are subject to prior sale, change or withdrawal.



Call Affinity Real Estate

218-237-3333

info@affinityrealestate.com



Affinity Real Estate - 600 Park Avenue South - Park Rapids MN 56470



website: www.AffinityRealEstate.com | email: info@affinityrealestate.com | office: 218-237-3333 | fax:218-237-3377

Affinity
REAL ESTATE INC

\$244,900
MLS 7072081 Residential
9403 White Sage Drive
Bemidji MN 56601



website: www.AffinityRealEstate.com | email: info@affinityrealestate.com | office: 218-237-3333 | fax:218-237-3377



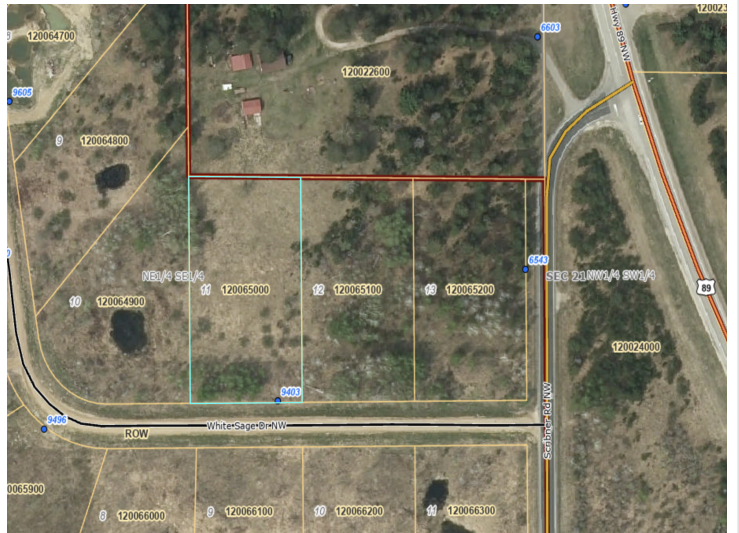
\$244,900
MLS 7072081 Residential
9403 White Sage Drive
Bemidji MN 56601



website: www.AffinityRealEstate.com | email: info@affinityrealestate.com | office: 218-237-3333 | fax:218-237-3377



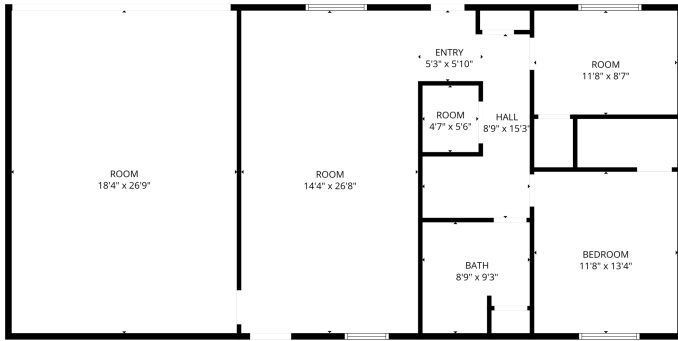
\$244,900
MLS 7072081 Residential
9403 White Sage Drive
Bemidji MN 56601



website: www.AffinityRealEstate.com | email: info@affinityrealestate.com | office: 218-237-3333 | fax:218-237-3377



\$244,900
MLS 7072081 Residential
9403 White Sage Drive
Bemidji MN 56601



FLOOR PLAN CREATED BY CURICASA APP. MEASUREMENTS DEEMED HIGHLY RELIABLE BUT NOT GUARANTEED.

website: www.AffinityRealEstate.com | email: info@affinityrealestate.com | office: 218-237-3333 | fax: 218-237-3377



\$244,900
MLS 7072081 Residential
9403 White Sage Drive
Bemidji MN 56601