



MLS 7072092 Lake Land

**\$599,900**



These data are provided on an "AS-IS" basis, without warranty of any type, expressed or implied, including but not limited to any warranty as to their performance, merchantability, or fitness for any particular purpose.

Gov Lot 1,2,3,4,9  
HEADQUARTERS DR NE, LONGVILLE MN

This map is not a substitute for accurate field surveys or for locating actual property lines and any adjacent features.



**Description:**

If you are looking for your own piece of privacy on beautiful Leech Lake, "Muskie Capital of the World," you have found the right place. This 118 acre property with over 5,058 feet of shoreline on Headquarters DR NE has endless potential. The seller has used the property previously for hunting and fishing over the years, and now it can be your own paradise! 20 minutes from Longville amenities, enjoy access to world-class fishing, boating, and year-round recreation. Hurry, now's your chance to own privacy on famous Leech Lake! Current access is 4-wheel drive or ATV only please. Property being sold As-Is.

**Additional Details:**

Lot Acres	118
Lot Dimensions	5058x395x3953x1293x650x1347x404
School District	118
Taxes	\$1,992
Taxes with Assessments	\$2,078
Tax Year	2026

**Additional Features:**

**Driving Directions:**

From Longville, head North on CR-8 NE(MN-84), in 6.8 miles turn left onto Forest Service Road 3100, in 2.6 miles the destination is on the right and arrive at 7998 Headquarters DR NE.



Listed By:  
Kurilla Real Estate LTD

Affinity Real Estate Inc. participates in the Regional Multiple Listing Service of Minnesota, Inc Broker Reciprocity (sm) program, allowing us to display other broker's listings on our website. All properties are subject to prior sale, change or withdrawal.



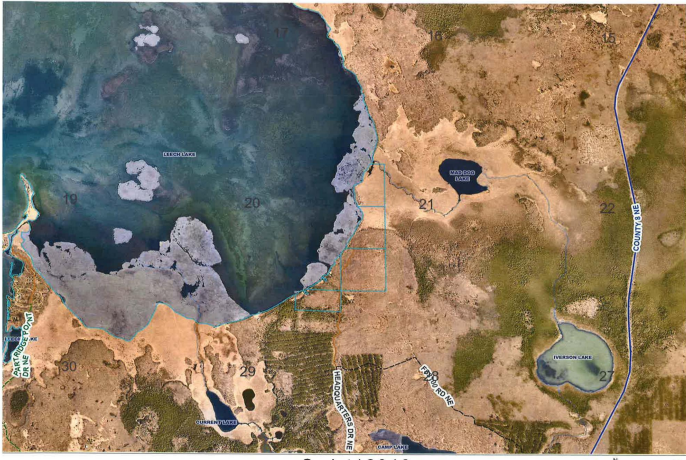
Call Affinity Real Estate

**218-237-3333**

[info@affinityrealestate.com](mailto:info@affinityrealestate.com)



Affinity Real Estate - 600 Park Avenue South - Park Rapids MN 56470



These data are provided on an "AS-IS" basis, without warranty of any type, expressed or implied, including but not limited to any warranty as to their performance, merchantability, or fitness for any particular purposes.

Gov Lot 1, 2, 3, 4, 9

HEADQUARTERS DR NE, LONGVILLE MN

This map is not a substitute for accurate field surveys or for locating actual property lines and any adjacent features.

Date: 5/7/2026



website: [www.AffinityRealEstate.com](http://www.AffinityRealEstate.com) | email: [info@affinityrealestate.com](mailto:info@affinityrealestate.com) | office: 218-237-3333 | fax: 218-237-3377



**\$599,900**  
MLS 7072092 Lake Land  
7998 Headquarters Drive  
Longville MN 56655



website: [www.AffinityRealEstate.com](http://www.AffinityRealEstate.com) | email: [info@affinityrealestate.com](mailto:info@affinityrealestate.com) | office: 218-237-3333 | fax:218-237-3377



**\$599,900**  
MLS 7072092 Lake Land  
7998 Headquarters Drive  
Longville MN 56655