



MLS 7072103 Land

\$94,900

4.09 Acres
Raw Land

TBD Kestrel Trail
Hackensack MN 56452

Status: Active

Description:

Build your dream home tucked away on Kestrel Trail NW, surrounded by woods, water, and privacy. This beautiful Hackensack-area lot offers a peaceful pond setting with natural shoreline views, mature trees, and a quiet Northwoods feel. The property connects to hundreds of acres of tax-forfeited land, giving it an expansive, secluded feel that is hard to find. Whether you are looking for a private cabin site, future year-round home, or a quiet getaway near the Woman Lake area, this setting offers a strong mix of privacy, recreation, and natural beauty. Enjoy the pond views, abundant wildlife, and nearby access to lakes, trails, and everything the Hackensack and Longville area has to offer. A rare opportunity to own land with water frontage, privacy, and direct access to a much larger natural backdrop.

Additional Details:

Lot Acres	4.09
Lot Dimensions	323x1306.x110x350.
School District	113
Taxes	\$186
Taxes with Assessments	\$186
Tax Year	2026

Additional Features:

Driving Directions:

From the Woman Lake Lodge, east on Cty Road 5 to Kestrel Trail, left or West to sign.



Listed By:
Coldwell Banker Realty

Affinity Real Estate Inc. participates in the Regional Multiple Listing Service of Minnesota, Inc Broker Reciprocity (sm) program, allowing us to display other broker's listings on our website. All properties are subject to prior sale, change or withdrawal.



Call Affinity Real Estate

218-237-3333

info@affinityrealestate.com



Affinity Real Estate - 600 Park Avenue South - Park Rapids MN 56470



website: www.AffinityRealEstate.com | email: info@affinityrealestate.com | office: 218-237-3333 | fax:218-237-3377

Affinity
REAL ESTATE INC

\$94,900
MLS 7072103 Land
TBD Kestrel Trail
Hackensack MN 56452



website: www.AffinityRealEstate.com | email: info@affinityrealestate.com | office: 218-237-3333 | fax:218-237-3377



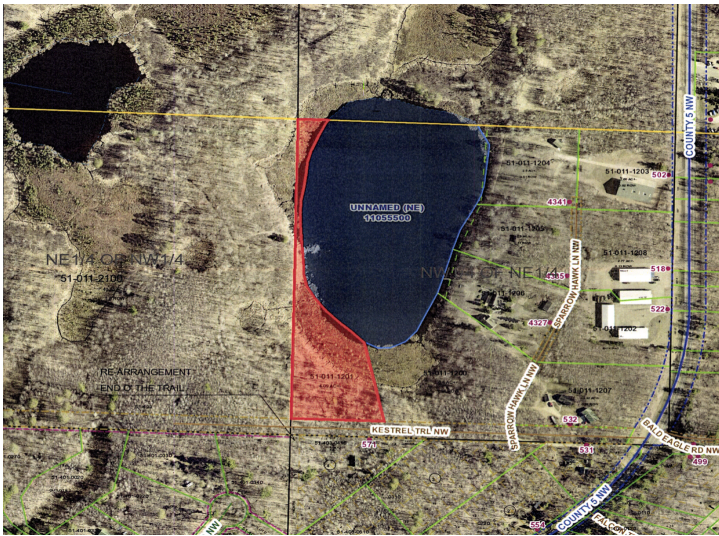
\$94,900
MLS 7072103 Land
TBD Kestrel Trail
Hackensack MN 56452



website: www.AffinityRealEstate.com | email: info@affinityrealestate.com | office: 218-237-3333 | fax:218-237-3377



\$94,900
MLS 7072103 Land
TBD Kestrel Trail
Hackensack MN 56452



website: www.AffinityRealEstate.com | email: info@affinityrealestate.com | office: 218-237-3333 | fax:218-237-3377



\$94,900
MLS 7072103 Land
TBD Kestrel Trail
Hackensack MN 56452