



MLS 7072157 Lake Home

\$325,000

1,232 sq ft
2 bedrooms
2 baths

34306 Twin Island Lane
Dent MN 56528

Waterfront: McDonald

Status: Active

Description:

The home is nestled amidst the serene landscapes of McDonal Lake, experience the beauty of nature and great views. The natural shoreline and a private space for having bonfires add to the ambiance of the property. McDonald lake provides endless opportunities for relaxation and a sandbar between McDonald and Big McDonald to gather for lake fun. This 2 bedroom , 2 bathroom home sits on 2.5 acres. New updates include 40 x 32 Pole Building, spray foam insulation, 10' sidewalls, Landscaping (retaining wall), propane free standing stove/fireplace, water softener, updated electrical for off peak system. Exterior of home freshly painted. Plenty of room to roam.

Additional Details:

Year Built	1978
Lot Acres	2.52
Lot Dimensions	irregular
Garage Stalls	3
School District	549
Taxes	\$1,941
Taxes with Assessments	\$2,026
Tax Year	2026

Additional Features:

Basement: Crawl Space **Fuel:** Electric, Propane **Garage:** 3 **Heat:** Forced Air **Sewer:** Septic System Compliant - Yes **Water:** Well **Air Conditioning:** Central Air

Driving Directions:

From 108 go North on Engstrom Beach Rd and follow the signs.



Listed By:
Trilogy Real Estate

Affinity Real Estate Inc. participates in the Regional Multiple Listing Service of Minnesota, Inc Broker Reciprocity (sm) program, allowing us to display other broker's listings on our website. All properties are subject to prior sale, change or withdrawal.



Call Affinity Real Estate

218-237-3333

info@affinityrealestate.com



Affinity Real Estate - 600 Park Avenue South - Park Rapids MN 56470



website: www.AffinityRealEstate.com | email: info@affinityrealestate.com | office: 218-237-3333 | fax:218-237-3377



\$325,000
MLS 7072157 Lake Home
34306 Twin Island Lane
Dent MN 56528



website: www.AffinityRealEstate.com | email: info@affinityrealestate.com | office: 218-237-3333 | fax:218-237-3377

Affinity
REAL ESTATE INC

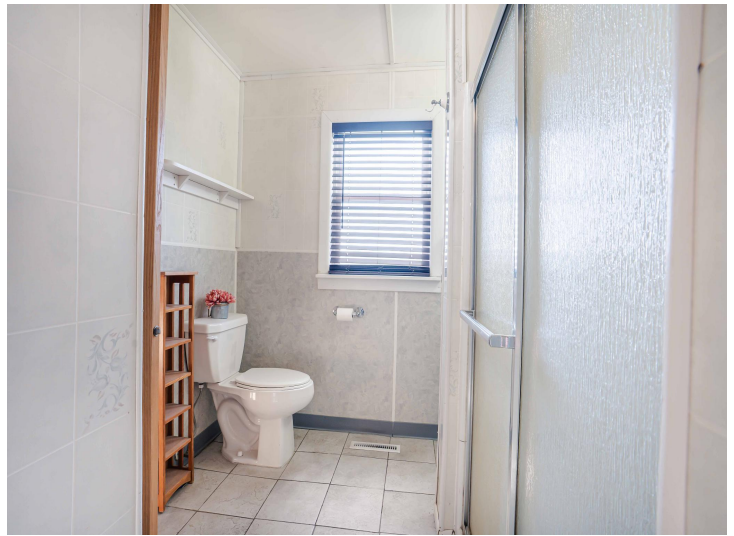
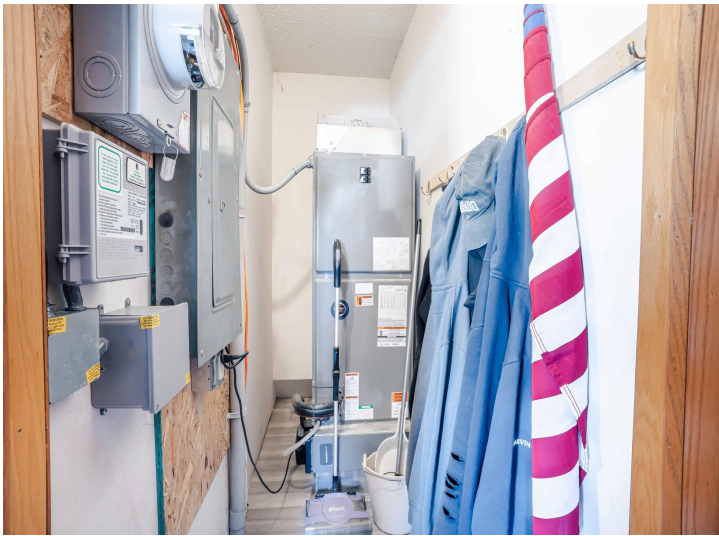
\$325,000
MLS 7072157 Lake Home
34306 Twin Island Lane
Dent MN 56528



website: www.AffinityRealEstate.com | email: info@affinityrealestate.com | office: 218-237-3333 | fax:218-237-3377



\$325,000
MLS 7072157 Lake Home
34306 Twin Island Lane
Dent MN 56528



website: www.AffinityRealEstate.com | email: info@affinityrealestate.com | office: 218-237-3333 | fax:218-237-3377



\$325,000
MLS 7072157 Lake Home
34306 Twin Island Lane
Dent MN 56528



website: www.AffinityRealEstate.com | email: info@affinityrealestate.com | office: 218-237-3333 | fax: 218-237-3377

Affinity
REAL ESTATE INC

\$325,000
MLS 7072157 Lake Home
34306 Twin Island Lane
Dent MN 56528



website: www.AffinityRealEstate.com | email: info@affinityrealestate.com | office: 218-237-3333 | fax:218-237-3377



\$325,000
MLS 7072157 Lake Home
34306 Twin Island Lane
Dent MN 56528



website: www.AffinityRealEstate.com | email: info@affinityrealestate.com | office: 218-237-3333 | fax:218-237-3377



\$325,000
MLS 7072157 Lake Home
34306 Twin Island Lane
Dent MN 56528