



MLS 7072304 Lake Home

\$1,449,000

3,500 sq ft
5 bedrooms
3 baths

23673 Clarissa Haven Drive
Henning MN 56551

Waterfront: West Battle


Status: Active

Description:

Welcome to your dream home on the coveted shores of West Battle Lake - where luxury, comfort, and the beauty of nature come together in perfect harmony. This immaculate 5-bedroom, 3-bathroom lakefront retreat was custom-built in 2006 with timeless design and high-quality craftsmanship throughout. Nestled on a beautifully landscaped lot with sweeping lake views and 136 feet of lake frontage, this property offers the ideal blend of upscale living and relaxed lakeside charm. Step inside to an inviting open-concept main floor featuring vaulted ceilings, rich hardwood floors, and a striking floor-to-ceiling stone fireplace that serves as the centerpiece of the living space. The wall of lakeside windows fills the home with natural light and offers stunning views from nearly every room. The spacious kitchen is perfect for gathering, with custom cabinetry, granite countertops, and a large center island that seamlessly connects to the dining and living areas. The main level also includes large bedrooms, including a luxurious primary suite with lake views, a walk-in closet, and a private bath. All three bathrooms are elegantly finished, featuring tile flooring and quality fixtures that reflect the home's thoughtful design. Downstairs, the fully finished walkout basement offers even more room to spread out and enjoy, featuring a large family room perfect for movie nights, or game days. Two additional generously sized bedrooms, a large bonus room, and a full bath make this lower level ideal for guests or extended family. Outside, entertain on the spacious lakeside deck or unwind by the fire pit just steps from the shoreline. With an attached 2-stall garage featuring in-floor heat, plus a detached oversized 2-stall garage, there's ample space for vehicles, lake toys, or a workshop. Whether you're looking for a year-round residence or a luxury lake getaway, this remarkable West Battle Lake home delivers privacy, space, and style—all on one of Minnesota's most sought-after lakes.

Additional Details:

Year Built	2006
Lot Acres	0.81
Lot Dimensions	136x260
Garage Stalls	4
School District	542
Taxes	\$6,225
Taxes with Assessments	\$6,310
Tax Year	2026

Listed By:
 Andrew and Flo Reisinger
 Affinity Real Estate Inc. participates in the Regional Multiple Listing Service of Minnesota, Inc Broker Reciprocity (sm) program, allowing us to display other broker's listings on our website. All properties are subject to the sale, change or withdrawal.



Call Affinity Real Estate

218-237-3333

info@affinityrealestate.com

   right to Clarissa Haven

Affinity Real Estate - 600 Park Avenue South - Park Rapids MN 56470



website: www.AffinityRealEstate.com | email: info@affinityrealestate.com | office: 218-237-3333 | fax:218-237-3377

Affinity
REAL ESTATE INC

\$1,449,000
MLS 7072304 Lake Home
23673 Clarissa Haven Drive
Henning MN 56551



website: www.AffinityRealEstate.com | email: info@affinityrealestate.com | office: 218-237-3333 | fax:218-237-3377

Affinity
REAL ESTATE INC

\$1,449,000
MLS 7072304 Lake Home
23673 Clarissa Haven Drive
Henning MN 56551



website: www.AffinityRealEstate.com | email: info@affinityrealestate.com | office: 218-237-3333 | fax: 218-237-3377

Affinity
REAL ESTATE INC

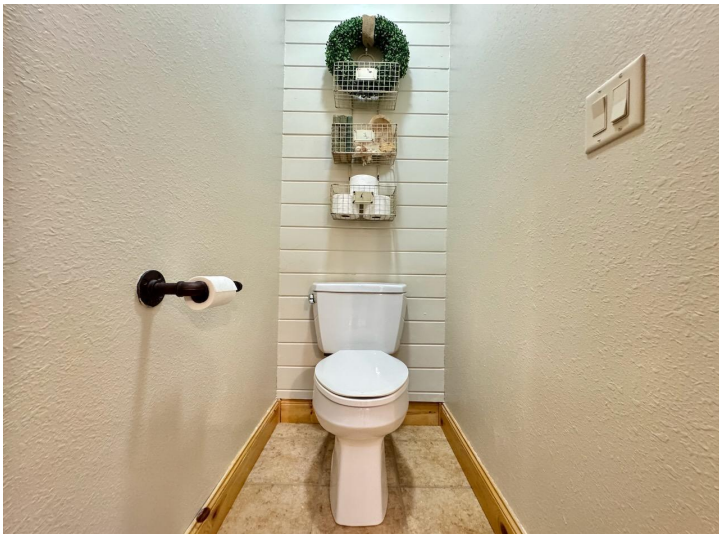
\$1,449,000
MLS 7072304 Lake Home
23673 Clarissa Haven Drive
Henning MN 56551



website: www.AffinityRealEstate.com | email: info@affinityrealestate.com | office: 218-237-3333 | fax: 218-237-3377

Affinity
REAL ESTATE INC

\$1,449,000
MLS 7072304 Lake Home
23673 Clarissa Haven Drive
Henning MN 56551



website: www.AffinityRealEstate.com | email: info@affinityrealestate.com | office: 218-237-3333 | fax:218-237-3377

Affinity
REAL ESTATE INC

\$1,449,000
MLS 7072304 Lake Home
23673 Clarissa Haven Drive
Henning MN 56551



website: www.AffinityRealEstate.com | email: info@affinityrealestate.com | office: 218-237-3333 | fax:218-237-3377



\$1,449,000
MLS 7072304 Lake Home
23673 Clarissa Haven Drive
Henning MN 56551



website: www.AffinityRealEstate.com | email: info@affinityrealestate.com | office: 218-237-3333 | fax: 218-237-3377

Affinity
REAL ESTATE INC

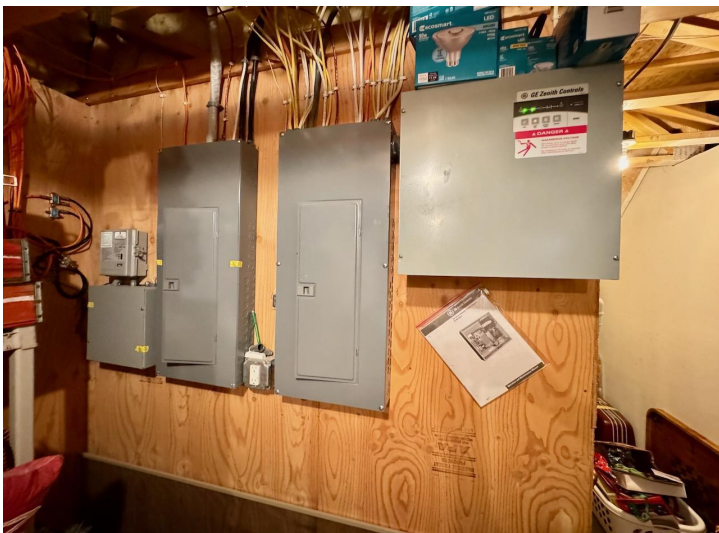
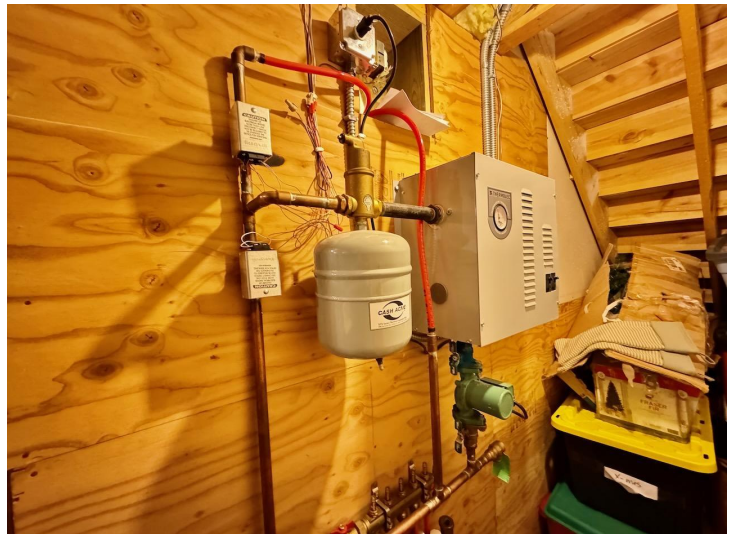
\$1,449,000
MLS 7072304 Lake Home
23673 Clarissa Haven Drive
Henning MN 56551



website: www.AffinityRealEstate.com | email: info@affinityrealestate.com | office: 218-237-3333 | fax:218-237-3377



\$1,449,000
MLS 7072304 Lake Home
23673 Clarissa Haven Drive
Henning MN 56551



website: www.AffinityRealEstate.com | email: info@affinityrealestate.com | office: 218-237-3333 | fax:218-237-3377



\$1,449,000
MLS 7072304 Lake Home
23673 Clarissa Haven Drive
Henning MN 56551



website: www.AffinityRealEstate.com | email: info@affinityrealestate.com | office: 218-237-3333 | fax:218-237-3377



\$1,449,000
MLS 7072304 Lake Home
23673 Clarissa Haven Drive
Henning MN 56551



website: www.AffinityRealEstate.com | email: info@affinityrealestate.com | office: 218-237-3333 | fax: 218-237-3377

Affinity
REAL ESTATE INC

\$1,449,000
MLS 7072304 Lake Home
23673 Clarissa Haven Drive
Henning MN 56551



website: www.AffinityRealEstate.com | email: info@affinityrealestate.com | office: 218-237-3333 | fax:218-237-3377



\$1,449,000
MLS 7072304 Lake Home
23673 Clarissa Haven Drive
Henning MN 56551



website: www.AffinityRealEstate.com | email: info@affinityrealestate.com | office: 218-237-3333 | fax:218-237-3377



\$1,449,000
MLS 7072304 Lake Home
23673 Clarissa Haven Drive
Henning MN 56551



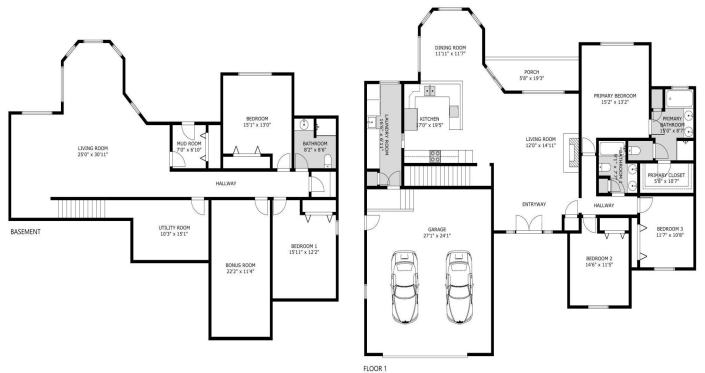
website: www.AffinityRealEstate.com | email: info@affinityrealestate.com | office: 218-237-3333 | fax:218-237-3377



\$1,449,000
MLS 7072304 Lake Home
23673 Clarissa Haven Drive
Henning MN 56551



23673 Clarissa Haven Dr



SIZE AND DIMENSIONS ARE APPROXIMATE, ACTUAL MAY VARY.

website: www.AffinityRealEstate.com | email: info@affinityrealestate.com | office: 218-237-3333 | fax: 218-237-3377



\$1,449,000
 MLS 7072304 Lake Home
 23673 Clarissa Haven Drive
 Henning MN 56551