



MLS 7072377 Lake Home

**\$599,900**

1,694 sq ft  
2 bedrooms  
2 baths

34148 Aztec Road  
Motley MN 56466

Waterfront: Shamineau

Status: Active

**Description:**

Experience lake living at its best with this beautifully updated cabin on Lake Shamineau. This inviting retreat features 2 bedrooms, 2 bathrooms, and two spacious living areas, offering plenty of room for relaxing and entertaining. The charming 3-season porch provides the perfect place to enjoy peaceful lake views and summer evenings. The property also includes a large garage with ample space for boats, lake toys, and outdoor equipment, plus a versatile flex entertainment space that can be used for gatherings, recreation, or additional sleeping accommodations for guests. Recent exterior renovations include maintenance-free decking and durable LP SmartSide siding, giving the home a fresh modern look with low-maintenance convenience. Whether you're looking for a weekend getaway or a year-round lake home, this property combines comfort, functionality, and the beauty of lakeside living.

**Additional Details:**

Year Built	1947
Lot Acres	0.22
Lot Dimensions	Irregular
Garage Stalls	6
School District	2170
Taxes	\$3,538
Taxes with Assessments	\$3,538
Tax Year	2026

**Additional Features:**

**Basement:** Block, Finished, Full, Walkout **Fuel:** Propane **Garage:** 6 **Heat:** Forced Air, Fireplace(s) **Sewer:** Holding Tank **Water:** Well **Air Conditioning:** Wall Unit(s)

**Driving Directions:**

Hwy 10 to Aztec Rd to property



Listed By:  
RE/MAX Advantage Plus

Affinity Real Estate Inc. participates in the Regional Multiple Listing Service of Minnesota, Inc Broker Reciprocity (sm) program, allowing us to display other broker's listings on our website. All properties are subject to prior sale, change or withdrawal.



Call Affinity Real Estate

**218-237-3333**

[info@affinityrealestate.com](mailto:info@affinityrealestate.com)



Affinity Real Estate - 600 Park Avenue South - Park Rapids MN 56470



website: [www.AffinityRealEstate.com](http://www.AffinityRealEstate.com) | email: [info@affinityrealestate.com](mailto:info@affinityrealestate.com) | office: 218-237-3333 | fax:218-237-3377

**Affinity**  
REAL ESTATE INC

**\$599,900**  
MLS 7072377 Lake Home  
34148 Aztec Road  
Motley MN 56466



website: [www.AffinityRealEstate.com](http://www.AffinityRealEstate.com) | email: [info@affinityrealestate.com](mailto:info@affinityrealestate.com) | office: 218-237-3333 | fax: 218-237-3377

**Affinity**  
REAL ESTATE INC

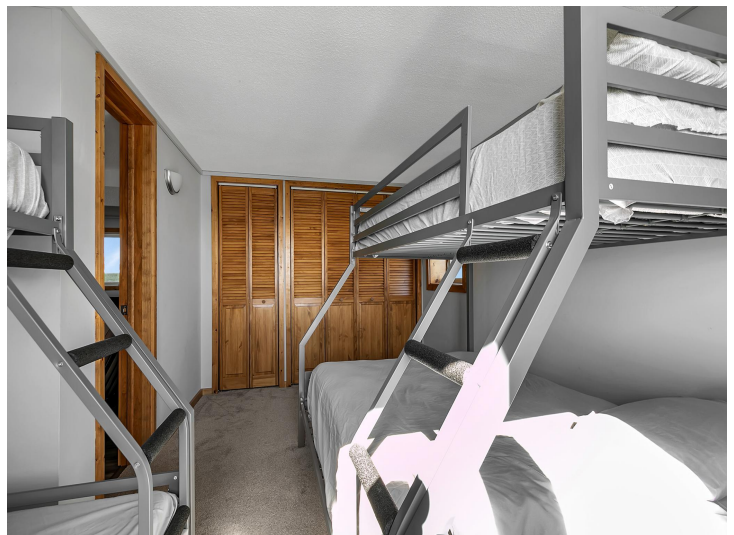
**\$599,900**  
MLS 7072377 Lake Home  
34148 Aztec Road  
Motley MN 56466



website: [www.AffinityRealEstate.com](http://www.AffinityRealEstate.com) | email: [info@affinityrealestate.com](mailto:info@affinityrealestate.com) | office: 218-237-3333 | fax:218-237-3377



**\$599,900**  
MLS 7072377 Lake Home  
34148 Aztec Road  
Motley MN 56466



website: [www.AffinityRealEstate.com](http://www.AffinityRealEstate.com) | email: [info@affinityrealestate.com](mailto:info@affinityrealestate.com) | office: 218-237-3333 | fax:218-237-3377

**Affinity**  
REAL ESTATE INC

**\$599,900**  
MLS 7072377 Lake Home  
34148 Aztec Road  
Motley MN 56466



website: [www.AffinityRealEstate.com](http://www.AffinityRealEstate.com) | email: [info@affinityrealestate.com](mailto:info@affinityrealestate.com) | office: 218-237-3333 | fax:218-237-3377



**\$599,900**  
MLS 7072377 Lake Home  
34148 Aztec Road  
Motley MN 56466



website: [www.AffinityRealEstate.com](http://www.AffinityRealEstate.com) | email: [info@affinityrealestate.com](mailto:info@affinityrealestate.com) | office: 218-237-3333 | fax:218-237-3377



**\$599,900**  
MLS 7072377 Lake Home  
34148 Aztec Road  
Motley MN 56466



website: [www.AffinityRealEstate.com](http://www.AffinityRealEstate.com) | email: [info@affinityrealestate.com](mailto:info@affinityrealestate.com) | office: 218-237-3333 | fax:218-237-3377



**\$599,900**  
MLS 7072377 Lake Home  
34148 Aztec Road  
Motley MN 56466



website: [www.AffinityRealEstate.com](http://www.AffinityRealEstate.com) | email: [info@affinityrealestate.com](mailto:info@affinityrealestate.com) | office: 218-237-3333 | fax:218-237-3377



**\$599,900**  
MLS 7072377 Lake Home  
34148 Aztec Road  
Motley MN 56466



website: [www.AffinityRealEstate.com](http://www.AffinityRealEstate.com) | email: [info@affinityrealestate.com](mailto:info@affinityrealestate.com) | office: 218-237-3333 | fax:218-237-3377

**Affinity**  
REAL ESTATE INC

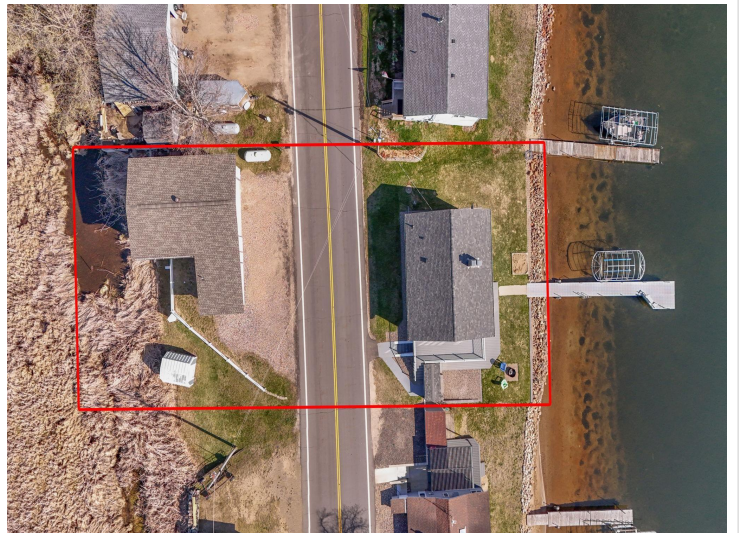
**\$599,900**  
MLS 7072377 Lake Home  
34148 Aztec Road  
Motley MN 56466



website: [www.AffinityRealEstate.com](http://www.AffinityRealEstate.com) | email: [info@affinityrealestate.com](mailto:info@affinityrealestate.com) | office: 218-237-3333 | fax:218-237-3377

**Affinity**  
REAL ESTATE INC

**\$599,900**  
MLS 7072377 Lake Home  
34148 Aztec Road  
Motley MN 56466



website: [www.AffinityRealEstate.com](http://www.AffinityRealEstate.com) | email: [info@affinityrealestate.com](mailto:info@affinityrealestate.com) | office: 218-237-3333 | fax:218-237-3377



**\$599,900**  
MLS 7072377 Lake Home  
34148 Aztec Road  
Motley MN 56466