



MLS 7072451 Residential

**\$315,000**

1,560 sq ft  
3 bedrooms  
2 baths

29287 Hoff Drive  
Cohasset MN 55721

Status: Active

**Description:**

This move-in ready slab-on-grade home sits on 8 beautiful acres with a private setting just minutes from Cohasset and lake life.

Featuring 3 bedrooms, 2 bathrooms, main floor laundry, attached garage with in-floor heat, compliant septic, charming back patio, and gorgeous perennial flower gardens surrounding the home. The property also offers plenty of space to add additional outbuildings while still enjoying the peaceful Northwoods feel.

A beautiful combination of comfort, privacy, and convenience!

**Additional Details:**

Year Built	2004
Lot Acres	8.42
Lot Dimensions	IRR
Garage Stalls	2
School District	318
Taxes	\$1,909
Taxes with Assessments	\$1,990
Tax Year	2026

**Additional Features:**

**Basement:** None **Fuel:** Natural Gas **Garage:** 2 **Heat:** Baseboard, Boiler, Hot Water, In-Floor Heating **Sewer:** Septic System Compliant - Yes  
**Water:** Private, Well **Air Conditioning:** Ductless Mini-Split

**Driving Directions:**

From Grand Rapids, take Hwy 2 W, to right on CR 88, to right on Hoff Dr, to property on left



Listed By:  
EDGE OF THE WILDERNESS REALTY

Affinity Real Estate Inc. participates in the Regional Multiple Listing Service of Minnesota, Inc Broker Reciprocity (sm) program, allowing us to display other broker's listings on our website. All properties are subject to prior sale, change or withdrawal.



**Call Affinity Real Estate**

**218-237-3333**

**info@affinityrealestate.com**



**Affinity Real Estate - 600 Park Avenue South - Park Rapids MN 56470**



website: [www.AffinityRealEstate.com](http://www.AffinityRealEstate.com) | email: [info@affinityrealestate.com](mailto:info@affinityrealestate.com) | office: 218-237-3333 | fax:218-237-3377



**\$315,000**  
MLS 7072451 Residential  
29287 Hoff Drive  
Cohasset MN 55721



website: [www.AffinityRealEstate.com](http://www.AffinityRealEstate.com) | email: [info@affinityrealestate.com](mailto:info@affinityrealestate.com) | office: 218-237-3333 | fax: 218-237-3377

**Affinity**  
REAL ESTATE INC

**\$315,000**  
MLS 7072451 Residential  
29287 Hoff Drive  
Cohasset MN 55721



website: [www.AffinityRealEstate.com](http://www.AffinityRealEstate.com) | email: [info@affinityrealestate.com](mailto:info@affinityrealestate.com) | office: 218-237-3333 | fax:218-237-3377

**Affinity**  
REAL ESTATE INC

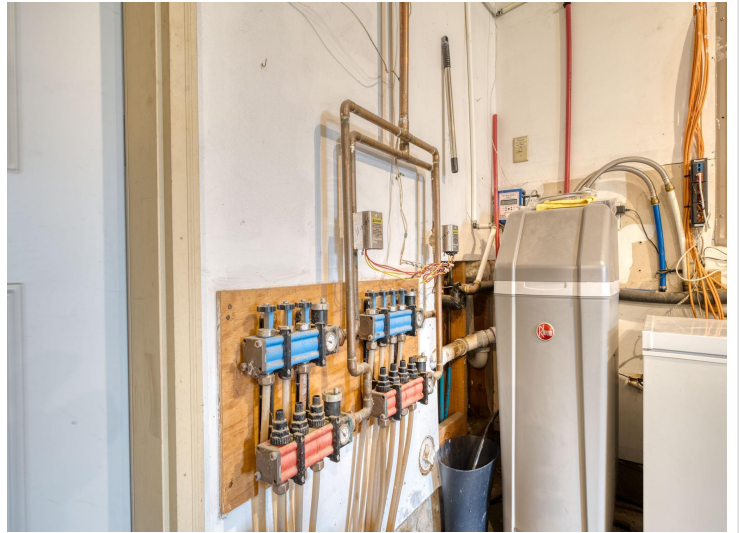
**\$315,000**  
MLS 7072451 Residential  
29287 Hoff Drive  
Cohasset MN 55721



website: [www.AffinityRealEstate.com](http://www.AffinityRealEstate.com) | email: [info@affinityrealestate.com](mailto:info@affinityrealestate.com) | office: 218-237-3333 | fax:218-237-3377



**\$315,000**  
MLS 7072451 Residential  
29287 Hoff Drive  
Cohasset MN 55721



website: [www.AffinityRealEstate.com](http://www.AffinityRealEstate.com) | email: [info@affinityrealestate.com](mailto:info@affinityrealestate.com) | office: 218-237-3333 | fax: 218-237-3377

**Affinity**  
REAL ESTATE INC

**\$315,000**  
MLS 7072451 Residential  
29287 Hoff Drive  
Cohasset MN 55721



website: [www.AffinityRealEstate.com](http://www.AffinityRealEstate.com) | email: [info@affinityrealestate.com](mailto:info@affinityrealestate.com) | office: 218-237-3333 | fax:218-237-3377



**\$315,000**  
MLS 7072451 Residential  
29287 Hoff Drive  
Cohasset MN 55721



website: [www.AffinityRealEstate.com](http://www.AffinityRealEstate.com) | email: [info@affinityrealestate.com](mailto:info@affinityrealestate.com) | office: 218-237-3333 | fax: 218-237-3377

**Affinity**  
REAL ESTATE INC

**\$315,000**  
MLS 7072451 Residential  
29287 Hoff Drive  
Cohasset MN 55721