



MLS 7072616 Residential

\$514,900

2,776 sq ft
4 bedrooms
3 baths

XXXX Chainview Drive
Alexandria MN 56308

Status: Active

Description:

To-be-built new construction just minutes from Lake Carlos in the beautiful Alexandria lakes area! This thoughtfully designed home offers the perfect blend of modern comfort and peaceful living in a highly desirable location. Enjoy open-concept living spaces, stylish finishes, and the opportunity to personalize selections to fit your lifestyle. The spacious layout is ideal for entertaining and everyday living, featuring a well-appointed kitchen (now with solid surface countertops as standard!), generous primary ensuite, and ample storage throughout. Additional standard finishes include insulated and sheet rocked triple garage, central air, energy efficient mechanicals and luxury flooring and quality lighting throughout. Conveniently located near lakes, recreation, dining, and local attractions like the popular Carlos Creek Winery, this property provides the best of Minnesota living with the quality finishes and features you deserve. Don't delay for the chance to make this beautiful custom build your own!

Additional Details:

Year Built	2026
Lot Acres	0.89
Lot Dimensions	130x296x130x297
Garage Stalls	3
School District	206
Taxes	(unreported)
Taxes with Assessments	(unreported)
Tax Year	2026

Additional Features:

Basement: Block, Drain Tiled, Egress Window(s), Finished, Full **Fuel:** Natural Gas **Garage:** 3 **Heat:** Forced Air **Sewer:** City Sewer/Connected
Water: Private, Well **Air Conditioning:** Central Air

Driving Directions:

From Broadway, R on 3rd Ave E, L on Nokomis, L on CR 42, R on CR 11, L on Chainview Drive to property



Listed By:
Central MN Realty LLC

Affinity Real Estate Inc. participates in the Regional Multiple Listing Service of Minnesota, Inc Broker Reciprocity (sm) program, allowing us to display other broker's listings on our website. All properties are subject to prior sale, change or withdrawal.



Call Affinity Real Estate

218-237-3333

info@affinityrealestate.com



Affinity Real Estate - 600 Park Avenue South - Park Rapids MN 56470



website: www.AffinityRealEstate.com | email: info@affinityrealestate.com | office: 218-237-3333 | fax:218-237-3377



\$514,900
MLS 7072616 Residential
XXXX Chainview Drive
Alexandria MN 56308



website: www.AffinityRealEstate.com | email: info@affinityrealestate.com | office: 218-237-3333 | fax:218-237-3377



\$514,900
MLS 7072616 Residential
XXXX Chainview Drive
Alexandria MN 56308



website: www.AffinityRealEstate.com | email: info@affinityrealestate.com | office: 218-237-3333 | fax: 218-237-3377



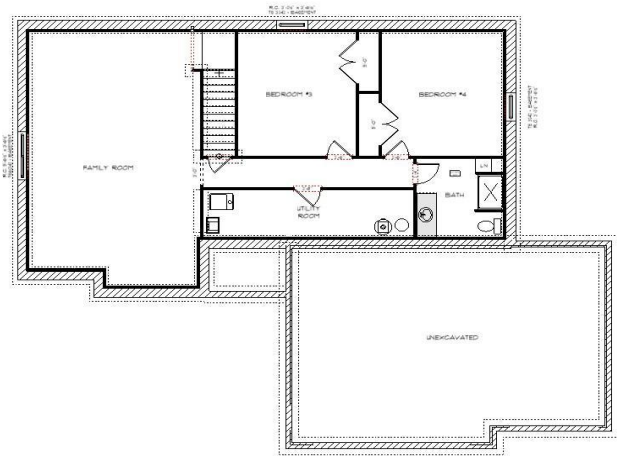
\$514,900
MLS 7072616 Residential
XXXX Chainview Drive
Alexandria MN 56308



website: www.AffinityRealEstate.com | email: info@affinityrealestate.com | office: 218-237-3333 | fax:218-237-3377



\$514,900
MLS 7072616 Residential
XXXX Chainview Drive
Alexandria MN 56308



website: www.AffinityRealEstate.com | email: info@affinityrealestate.com | office: 218-237-3333 | fax:218-237-3377



\$514,900
MLS 7072616 Residential
XXXX Chainview Drive
Alexandria MN 56308