

MLS 7072635 Residential

\$339,000

1,452 sq ft
2 bedrooms
1 baths

33293 115th Avenue
Eagle Bend MN 56446

Status: Active

Description:

Located between Rose City and Eagle Bend, this 18.37± acre farmstead offers an excellent opportunity for hobby farming, homesteading, or quiet country living. The property features a modest 2-bedroom, 1-bath home with a full unfinished basement, providing room to expand or customize to fit your needs. The home is fully wired and plumbed; utility systems will require reconnection and updates for residential use and compliance.

A newly constructed 70'x80' shop/pole barn provides outstanding space for equipment, livestock, storage, or workshop use. Additional outbuildings and a classic barn add flexibility and functionality to the property. The fenced pasture is well-suited for horses, sheep, cattle or other livestock. A 4" drilled well and a newer 1,500-gallon septic holding tank are already in place.

With established infrastructure, usable acreage, and a peaceful rural setting, this property is well-positioned for anyone seeking a self-sufficient lifestyle, hobby farm setup, or country retreat.

Additional Details:

Year Built	1970
Lot Acres	18.37
Lot Dimensions	Irregular
Garage Stalls	1
School District	786
Taxes	\$1,788
Taxes with Assessments	\$1,788
Tax Year	2026

Additional Features:

Basement: Block, Full, Storage Space, Unfinished **Fuel:** Wood **Garage:** 1 **Heat:** Wood Stove **Sewer:** Holding Tank **Water:** Drilled, Well **Air Conditioning:** None

Driving Directions:

East of Rose City on County Road 14 for 2 miles to 115th Ave, go North



Listed By:
Century 21 First Realty, Inc.

Affinity Real Estate Inc. participates in the Regional Multiple Listing Service of Minnesota, Inc Broker Reciprocity (sm) program, allowing us to display other broker's listings on our website. All properties are subject to prior sale, change or withdrawal.



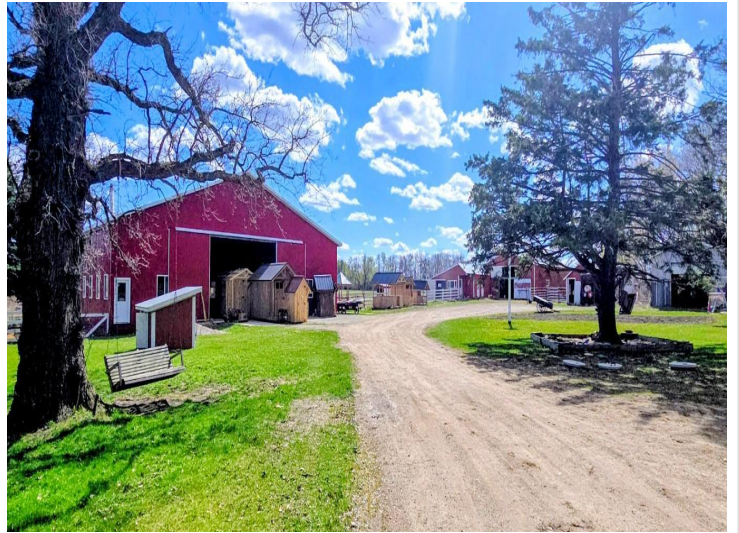
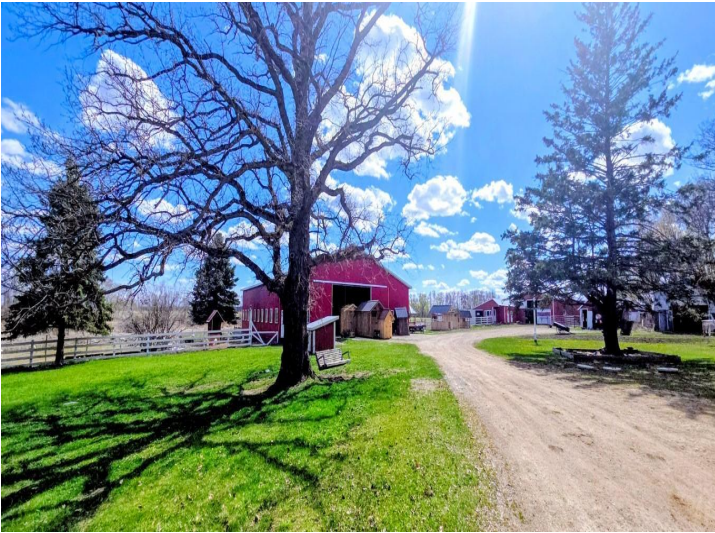
Call Affinity Real Estate

218-237-3333

info@affinityrealestate.com



Affinity Real Estate - 600 Park Avenue South - Park Rapids MN 56470



website: www.AffinityRealEstate.com | email: info@affinityrealestate.com | office: 218-237-3333 | fax: 218-237-3377

Affinity
REAL ESTATE INC

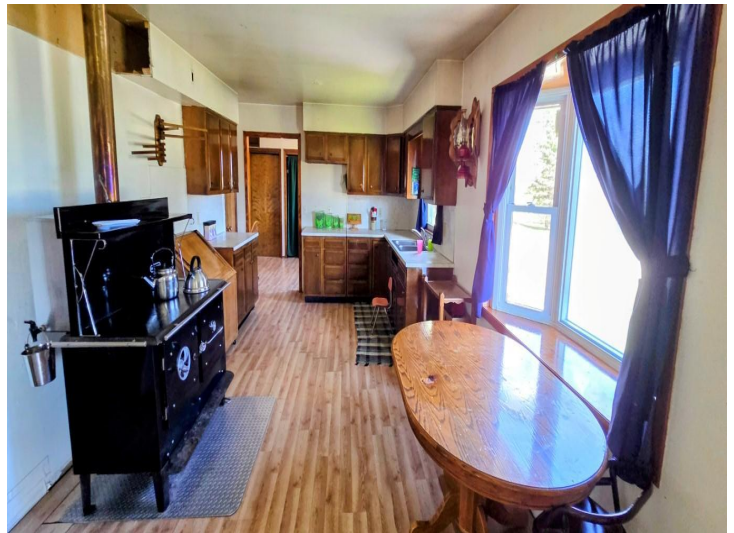
\$339,000
MLS 7072635 Residential
33293 115th Avenue
Eagle Bend MN 56446



website: www.AffinityRealEstate.com | email: info@affinityrealestate.com | office: 218-237-3333 | fax:218-237-3377



\$339,000
MLS 7072635 Residential
33293 115th Avenue
Eagle Bend MN 56446



website: www.AffinityRealEstate.com | email: info@affinityrealestate.com | office: 218-237-3333 | fax:218-237-3377



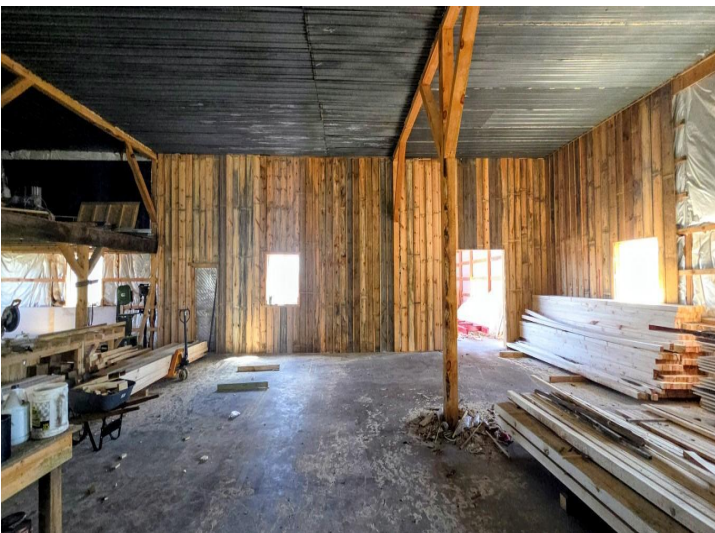
\$339,000
MLS 7072635 Residential
33293 115th Avenue
Eagle Bend MN 56446



website: www.AffinityRealEstate.com | email: info@affinityrealestate.com | office: 218-237-3333 | fax:218-237-3377

Affinity
REAL ESTATE INC

\$339,000
MLS 7072635 Residential
33293 115th Avenue
Eagle Bend MN 56446



website: www.AffinityRealEstate.com | email: info@affinityrealestate.com | office: 218-237-3333 | fax:218-237-3377



\$339,000
MLS 7072635 Residential
33293 115th Avenue
Eagle Bend MN 56446



website: www.AffinityRealEstate.com | email: info@affinityrealestate.com | office: 218-237-3333 | fax:218-237-3377



\$339,000
MLS 7072635 Residential
33293 115th Avenue
Eagle Bend MN 56446



website: www.AffinityRealEstate.com | email: info@affinityrealestate.com | office: 218-237-3333 | fax:218-237-3377

Affinity
REAL ESTATE INC

\$339,000
MLS 7072635 Residential
33293 115th Avenue
Eagle Bend MN 56446



website: www.AffinityRealEstate.com | email: info@affinityrealestate.com | office: 218-237-3333 | fax:218-237-3377

Affinity
REAL ESTATE INC

\$339,000
MLS 7072635 Residential
33293 115th Avenue
Eagle Bend MN 56446