



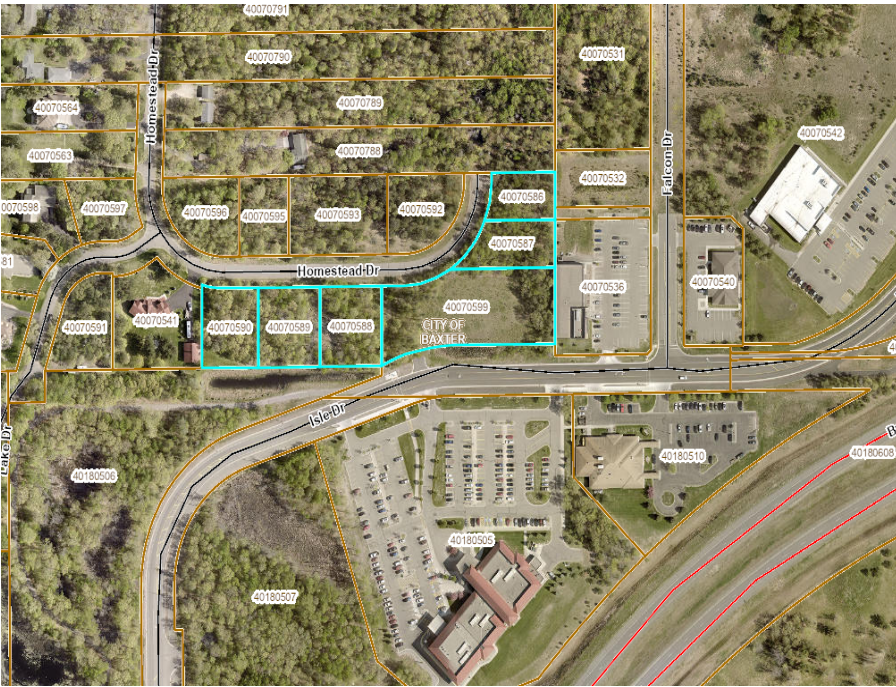
MLS 7072639 Land

**\$449,000**

4.02 Acres  
Raw Land

XX Isle Drive  
Baxter MN 56425

Status: Active



**Description:**

Highly desirable development site located in a medical heavy district of Baxter, MN. There is also nearby big box retail including Walmart and Hobby Lobby. Conveniently located near a popular walking trail.

**Additional Details:**

Lot Acres	4.02
Lot Dimensions	Irregular
School District	181
Taxes	\$8,022
Taxes with Assessments	\$8,022
Tax Year	2024

**Additional Features:**

**Driving Directions:**

Located directly across from Essentia Health - Baxter Specialty Clinic off of Isle Dr.



Listed By:  
Parcel Real Estate Inc.

Affinity Real Estate Inc. participates in the Regional Multiple Listing Service of Minnesota, Inc Broker Reciprocity (sm) program, allowing us to display other broker's listings on our website. All properties are subject to prior sale, change or withdrawal.



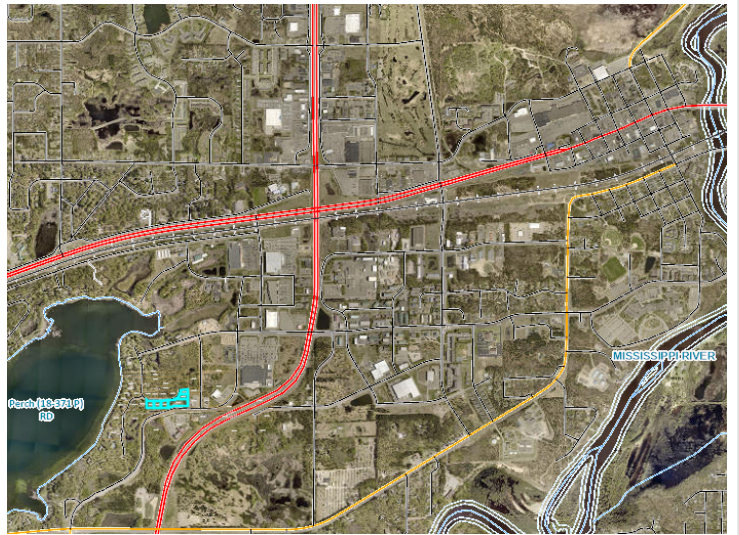
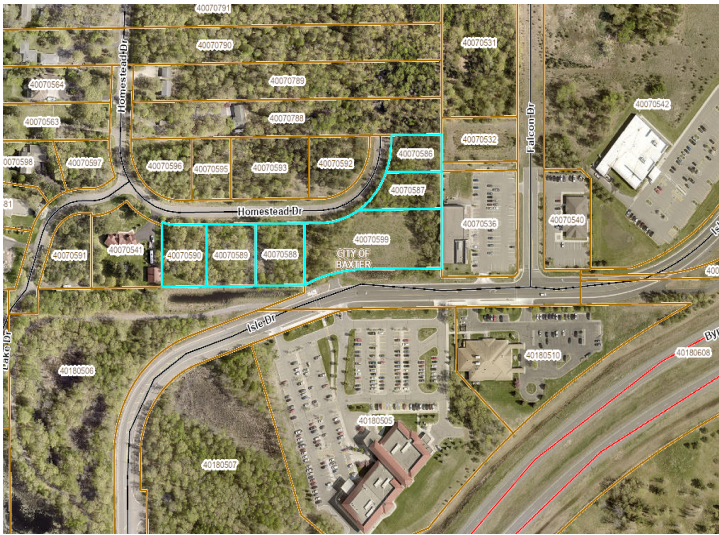
Call Affinity Real Estate

**218-237-3333**

[info@affinityrealestate.com](mailto:info@affinityrealestate.com)



Affinity Real Estate - 600 Park Avenue South - Park Rapids MN 56470



website: [www.AffinityRealEstate.com](http://www.AffinityRealEstate.com) | email: [info@affinityrealestate.com](mailto:info@affinityrealestate.com) | office: 218-237-3333 | fax: 218-237-3377



**\$449,000**  
 MLS 7072639 Land  
 XX Isle Drive  
 Baxter MN 56425