



MLS 7072665 Residential

\$349,900

2,265 sq ft
3 bedrooms
2 baths

2505 Conifer Avenue
Alexandria MN 56308

Status: Coming Soon

Description:

Spacious 3+ bedroom, 2 bathroom home in a quiet and desirable neighborhood! With over 3,000sqft, this home offers room for everyone with generous living spaces, tons of storage, and a bonus non-conforming bedroom perfect for guests, an office, or hobby room. Enjoy the convenience of a double heated garage, plus a beautiful backyard ideal for relaxing or entertaining. If you've been looking for space, comfort, and a fantastic location — this home has it all!

Additional Details:

Year Built	1993
Lot Acres	0.47
Lot Dimensions	110x185
Garage Stalls	2
School District	206
Taxes	\$3,596
Taxes with Assessments	\$3,596
Tax Year	2025

Additional Features:

Basement: Full, Partially Finished **Fuel:** Natural Gas **Garage:** 2 **Heat:** Forced Air **Sewer:** City Sewer/Connected **Water:** City Water - In Street, Well **Air Conditioning:** Central Air

Driving Directions:

From CoRd 82 East out of Alexandria, turn left onto Birch Ave. Then turn right onto Conifer Ave. Home will be on the right. Watch for sign.



Listed By:
Kvale Real Estate

Affinity Real Estate Inc. participates in the Regional Multiple Listing Service of Minnesota, Inc Broker Reciprocity (sm) program, allowing us to display other broker's listings on our website. All properties are subject to prior sale, change or withdrawal.



Call Affinity Real Estate

218-237-3333

info@affinityrealestate.com



Affinity Real Estate - 600 Park Avenue South - Park Rapids MN 56470



website: www.AffinityRealEstate.com | email: info@affinityrealestate.com | office: 218-237-3333 | fax:218-237-3377



\$349,900
MLS 7072665 Residential
2505 Conifer Avenue
Alexandria MN 56308



website: www.AffinityRealEstate.com | email: info@affinityrealestate.com | office: 218-237-3333 | fax:218-237-3377



\$349,900
MLS 7072665 Residential
2505 Conifer Avenue
Alexandria MN 56308



website: www.AffinityRealEstate.com | email: info@affinityrealestate.com | office: 218-237-3333 | fax: 218-237-3377

Affinity
REAL ESTATE INC

\$349,900
MLS 7072665 Residential
2505 Conifer Avenue
Alexandria MN 56308



website: www.AffinityRealEstate.com | email: info@affinityrealestate.com | office: 218-237-3333 | fax: 218-237-3377

Affinity
REAL ESTATE INC

\$349,900
MLS 7072665 Residential
2505 Conifer Avenue
Alexandria MN 56308



website: www.AffinityRealEstate.com | email: info@affinityrealestate.com | office: 218-237-3333 | fax:218-237-3377

Affinity
REAL ESTATE INC

\$349,900
MLS 7072665 Residential
2505 Conifer Avenue
Alexandria MN 56308



website: www.AffinityRealEstate.com | email: info@affinityrealestate.com | office: 218-237-3333 | fax:218-237-3377

Affinity
REAL ESTATE INC

\$349,900
MLS 7072665 Residential
2505 Conifer Avenue
Alexandria MN 56308



website: www.AffinityRealEstate.com | email: info@affinityrealestate.com | office: 218-237-3333 | fax:218-237-3377



\$349,900
MLS 7072665 Residential
2505 Conifer Avenue
Alexandria MN 56308



website: www.AffinityRealEstate.com | email: info@affinityrealestate.com | office: 218-237-3333 | fax:218-237-3377

Affinity
REAL ESTATE INC

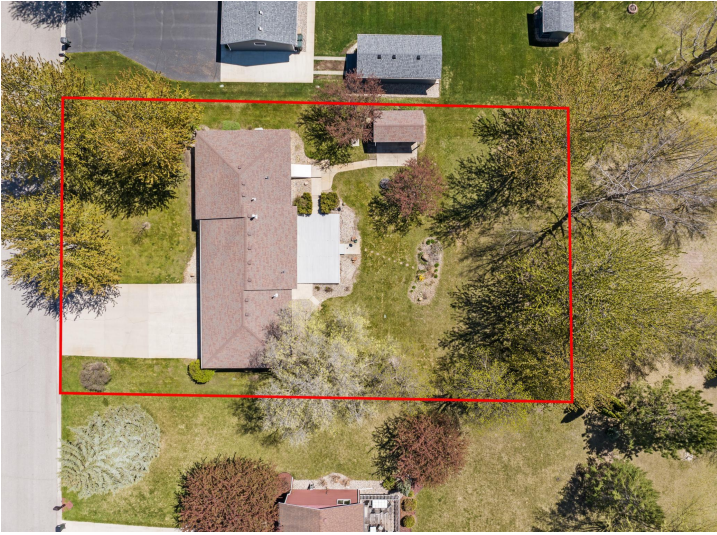
\$349,900
MLS 7072665 Residential
2505 Conifer Avenue
Alexandria MN 56308



website: www.AffinityRealEstate.com | email: info@affinityrealestate.com | office: 218-237-3333 | fax:218-237-3377

Affinity
REAL ESTATE INC

\$349,900
MLS 7072665 Residential
2505 Conifer Avenue
Alexandria MN 56308



website: www.AffinityRealEstate.com | email: info@affinityrealestate.com | office: 218-237-3333 | fax:218-237-3377



\$349,900
MLS 7072665 Residential
2505 Conifer Avenue
Alexandria MN 56308