



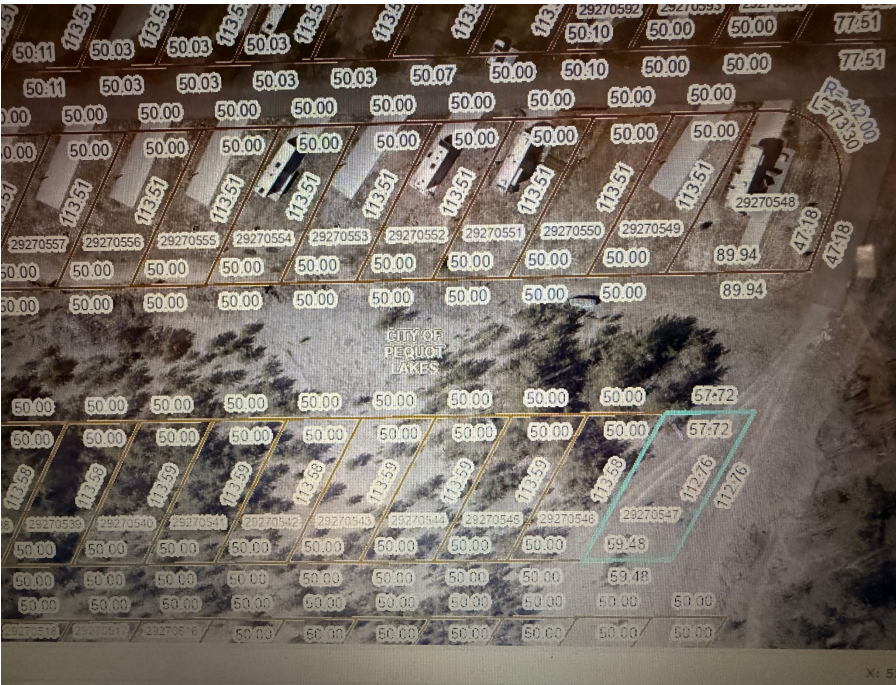
MLS 7072737 Land

**\$12,000**

0.147 Acres  
Raw Land

28668 Lot 133 Hurtig Road  
Pequot Lakes MN 56472

Status: Active



**Description:**

Unfinished RV lot with access to hook up to electricity along with shared water/sewer. This park includes paved roads and a shower facility. Close to everything the Brainerd Lakes area offers!

**Additional Details:**

Lot Acres	0.147
Lot Dimensions	57x113
School District	186
Taxes	\$178
Taxes with Assessments	\$178
Tax Year	2025

**Additional Features:**

**Driving Directions:**

From Brainerd, north on 371 to a left on Patriot Ave, to the first left to a left on hurtig road. Gate opening is on the left.



Listed By:  
Weichert REALTORS Tower Properties

Affinity Real Estate Inc. participates in the Regional Multiple Listing Service of Minnesota, Inc Broker Reciprocity (sm) program, allowing us to display other broker's listings on our website. All properties are subject to prior sale, change or withdrawal.



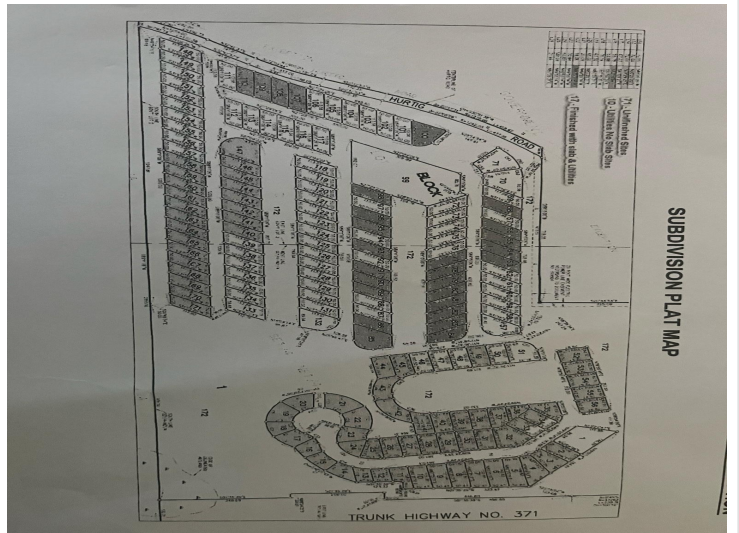
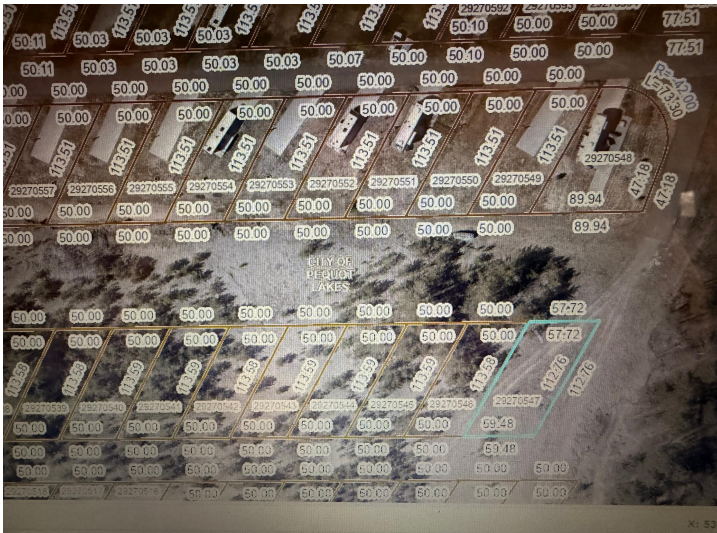
Call Affinity Real Estate

**218-237-3333**

[info@affinityrealestate.com](mailto:info@affinityrealestate.com)



Affinity Real Estate - 600 Park Avenue South - Park Rapids MN 56470



website: [www.AffinityRealEstate.com](http://www.AffinityRealEstate.com) | email: [info@affinityrealestate.com](mailto:info@affinityrealestate.com) | office: 218-237-3333 | fax:218-237-3377



**\$12,000**  
 MLS 7072737 Land  
 28668 Lot 133 Hurtig Road  
 Pequot Lakes MN 56472